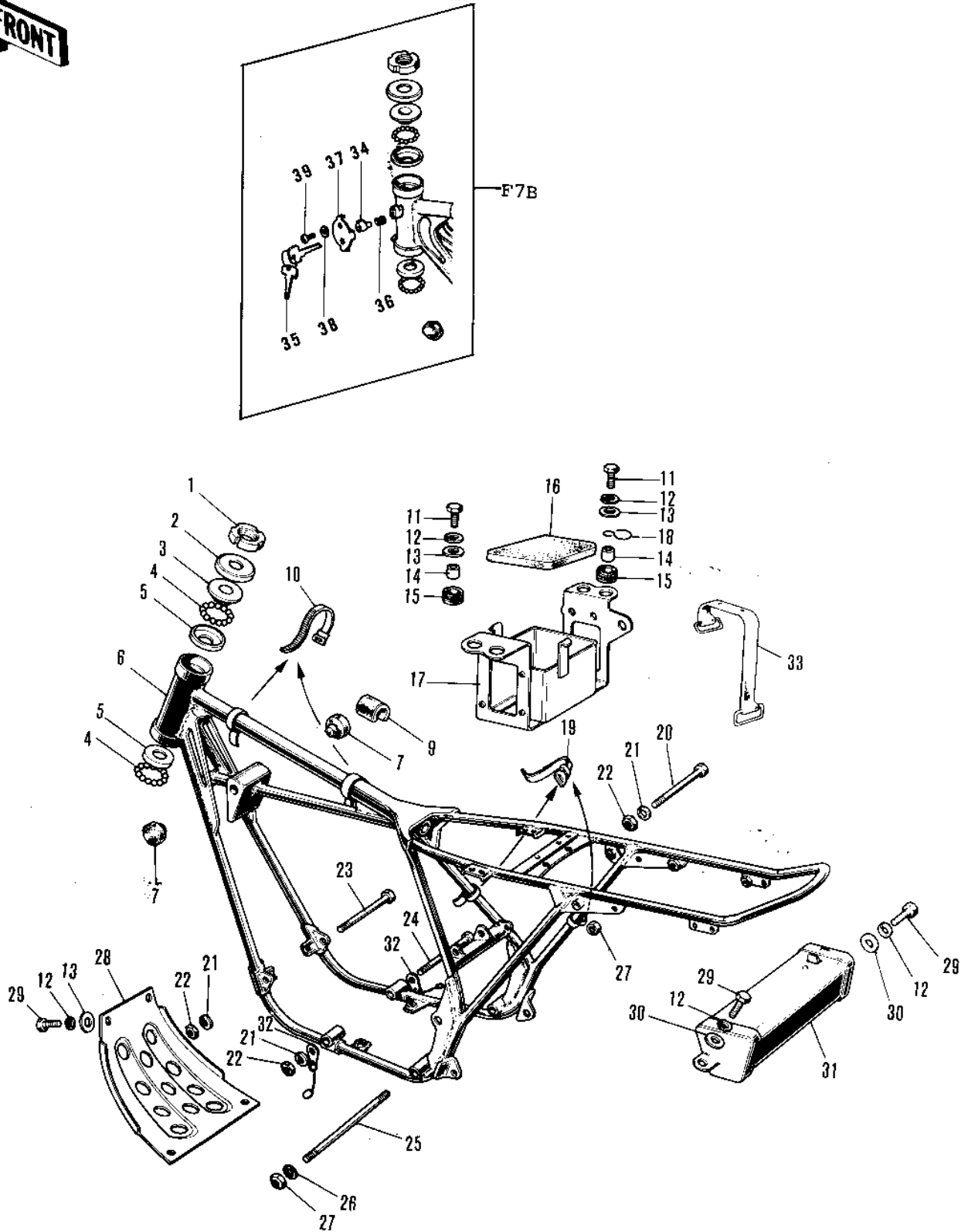


1973 F7-B PARTS DIAGRAM

FRAME/FRAME FITTINGS ('71-'73 F7/F7-A/F7)



1973 F7-B PARTS LIST

FRAME/FRAME FITTINGS ('71-'73 F7/F7-A/F7)

| ITEM NAME | PART NUMBER | QUANTITY |
|-------------------------------------|-------------|----------|
| NUT STEERING STEM LCK (Ref # 1) | 92090-006 | 1 |
| CAP STEERING STEM (Ref # 2) | 46098-005 | 1 |
| CONE UPPER BEARING (Ref # 3) | 92047-005 | 1 |
| BALL STEEL 3/16" (Ref # 4) | 600A0600 | 1 |
| RACE BEARING (Ref # 5) | 92048-004 | 1 |
| UNAVAILABLE IN PRICE BOOK (Ref # 6) | 32002-043 | 1 |
| FRAME (Ref # 6) | 32002-060 | 1 |
| DAMPER RUBBER FUEL TANK (Ref # 7) | 92075-050 | 1 |
| MAT FUEL TANK (Ref # 8) | 51067-002 | 2 |
| BAND, LONG (Ref # 10) | 92072-032 | 1 |
| BOLT-UPSET, 6X20 (Ref # 11) | 112G0620 | 2 |
| WASHER SPRING 6MM (Ref # 12) | 461F0600 | 1 |
| WASHER 6.5X20X1.6T (Ref # 13) | 92022-125 | 1 |
| COLLAR (Ref # 14) | 92027-103 | 1 |
| DAMPER RUBBER (Ref # 15) | 92075-051 | 1 |
| MAT-BATTERY (Ref # 16) | 32103-019 | 1 |
| CASE-BATTERY (Ref # 17) | 32097-018 | 1 |
| CLAMP CABLE (Ref # 18) | 92037-026 | 1 |
| BAND, MIDDLE (Ref # 19) | 92072-031 | 1 |
| BOLT, FLANGED, 10X115 (Ref # 20) | 92001-1603 | 1 |
| WASHER SPRING 10MM (Ref # 21) | 461F1000 | 1 |
| NUT, 10MM (Ref # 22) | 314B1000 | 1 |
| BOLT-HEX HEAD, 10X145 (Ref # 23) | 113B10145 | 1 |
| BOLT, HEX HEAD, 10X150 (Ref # 23) | 92001-1251 | 1 |
| BOLT-HEX HEAD, 10X225 (Ref # 24) | 113B10225 | 2 |
| STUD, 12X290 (Ref # 25) | 92006-003 | 1 |
| WASHER SPRING 12MM (Ref # 26) | 461F1200 | 1 |
| NUT-HEX-FINE (Ref # 27) | 314B1200 | 1 |
| GUARD-ENGINE (Ref # 28) | 55011-012 | 1 |

1973 F7-B PARTS LIST

FRAME/FRAME FITTINGS ('71-'73 F7/F7-A/F7)

| ITEM NAME | PART NUMBER | QUANTITY |
|--------------------------------------|--------------|----------|
| BOLT-UPSET,6X12 (Ref # 29) | 112G0612 | 1 |
| WASHER PLAIN 6MM (Ref # 30) | 410B0600 | 1 |
| BOX-TOOL (Ref # 31) | 32098-013 | 1 |
| UNAVAILABLE IN PRICE BOOK (Ref # 32) | 58041-006 | 1 |
| CHAIN (Ref # 32) | 58041-012 | 1 |
| BAND TOOL (Ref # 33) | 92072-012 | 1 |
| LOCK ASSY-STEERING (Ref # 34~35) | 27016-029 | 1 |
| KEY SET-STRNG #270 (Ref # 35) | 27018-015-70 | 1 |
| KEY SET-STRNG #271 (Ref # 35) | 27018-015-71 | 1 |
| KEY SET-STRNG #272 (Ref # 35) | 27018-015-72 | 1 |
| KEY SET-STRNG #273 (Ref # 35) | 27018-015-73 | 1 |
| KEY SET-STRNG #274 (Ref # 35) | 27018-015-74 | 1 |
| SPRING-STEERING LOCK (Ref # 36) | 27032-001 | 1 |
| CAP,STEERING LOCK (Ref # 37) | 11012-1134 | 1 |
| WASHER (Ref # 38) | 92097-003 | 1 |
| SCREW-TAPPING (Ref # 39) | 92008-007 | 1 |