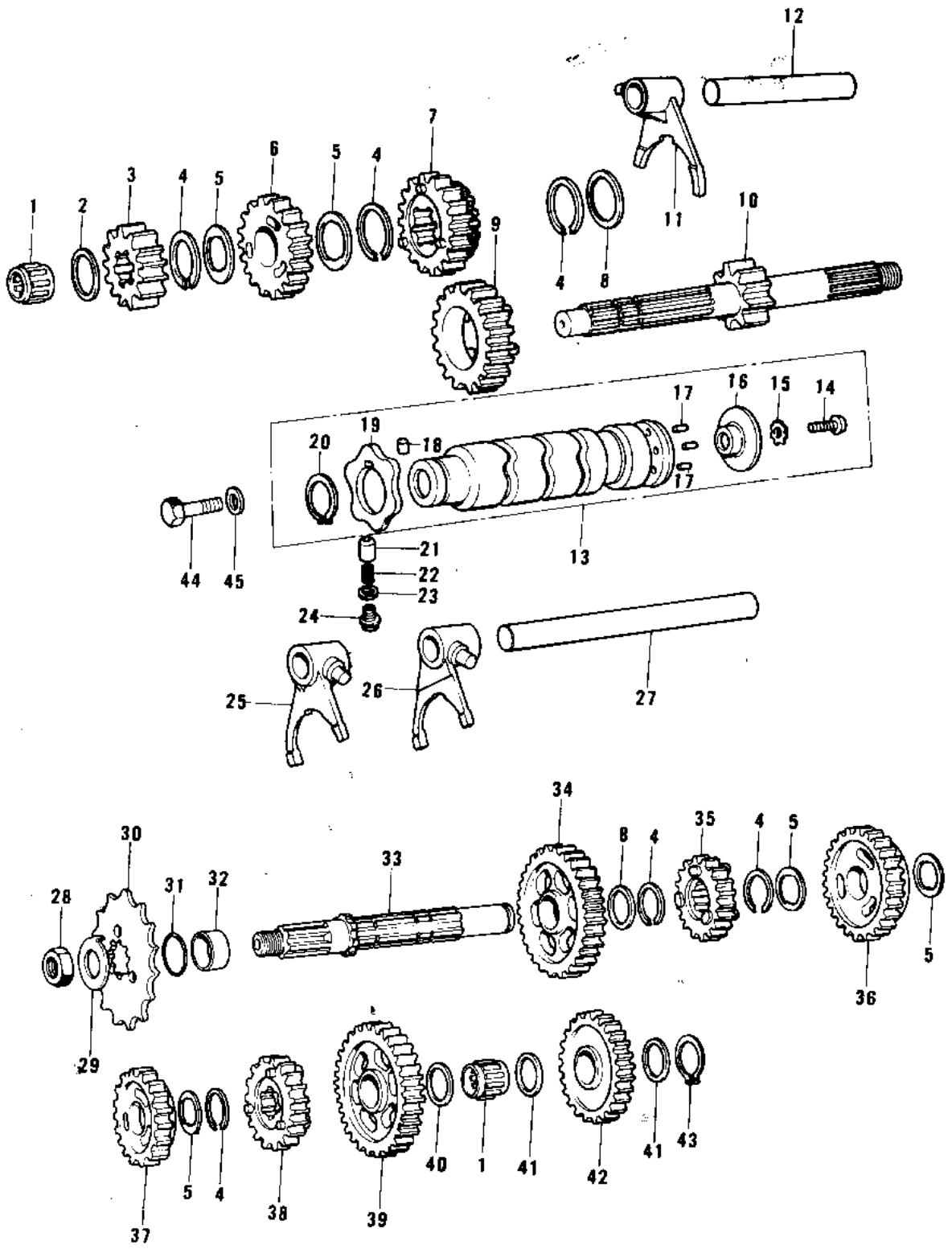


# 1975 KX125-A PARTS DIAGRAM

TRANSMISSION/CHANGE DRUM



# 1975 KX125-A PARTS LIST

## TRANSMISSION/CHANGE DRUM

ITEM NAME	PART NUMBER	QUANTITY
.BRG,N,7E-HK1412 (Ref # 1)	92046-037	
WASHER,PLAIN (Ref # 2)	92022-272	
2ND GEAR,DRIVE SHAFT (Ref # 3)	13130-036	
CIRCLIP (Ref # 4)	92033-028	
WASHER,LOCK (Ref # 5)	92024-055	
TOP GEAR,DRIVE SHAFT (Ref # 6)	13136-050	
3RD&4TH GEAR,DRV SHFT (Ref # 7)	13132-038	
WASHER,PLAIN (Ref # 8)	92022-271	
5TH GEAR,DRIVE SHAFT (Ref # 9)	13247-002	
SHAFT,DRIVE (Ref # 10)	13127-048	
FORK,SELECTOR,5TH&TOP (Ref # 11)	13140-060	
RODSHIFT,SHORT (Ref # 12)	13209-014	
DRUM ASSY,GEAR SHIFT (Ref # 13)	13239-018	
SCREW PAN HEAD 6X14 (Ref # 14)	220B0614	
WASHER LOCK 6MM (Ref # 15)	464H0600	
PLTE,SHIFT DRUM PIN (Ref # 16)	13142-017	
PIN,GEAR CHNGE DRUM (Ref # 17)	92042-030	
PIN-DOWEL,4X6 (Ref # 18)	610A0406	
CAM-CHANGE DRUM (Ref # 19)	13145-1058	
CIRCLIP,30MM (Ref # 20)	480J3000	
PIN-NEUTRAL POSITION (Ref # 21)	92043-076	
SPRING (Ref # 22)	92081-112	
SPRING (Ref # 22)	92081-112	
GASKET (Ref # 23)	92065-090	
BOLT,10MM (Ref # 24)	92001-131	
FORK,SELECTOR,2ND&3RD (Ref # 25)	13140-059	
FORK,SELECTOR,LOW&4TH (Ref # 26)	13140-058	
ROD-SHIFT,10X102 (Ref # 27)	49047-1060	
NUT 14MM (Ref # 28)	315B1400	

# 1975 KX125-A PARTS LIST

## TRANSMISSION/CHANGE DRUM

ITEM NAME	PART NUMBER	QUANTITY
WASHER, (Ref # 29)	92024-052	
ENGINE SPROCKET,13T (Ref # 30)	13144-053	
SPROCKET-OUTPUT,14T (Ref # 30)	13144-1058	
ENGINE SPROCKET,12T (Ref # 30)	13144-058	
"0" RING (Ref # 31)	92055-022	
COLLAR,ENG SPROCKET (Ref # 32)	92027-1077	
SHAFT,OUTPUT (Ref # 33)	13128-040	
2ND GEAR,OUTPUT SHAFT (Ref # 34)	13131-043	
TOP GEAR,OUTPUT SHAFT (Ref # 35)	13137-032	
3RD GEAR,OUTPUT SHAFT (Ref # 36)	13133-038	
4TH GEAR,OUTPUT SHAFT (Ref # 37)	13135-027	
5TH GEAR,OUTPUT SHAFT (Ref # 38)	13248-002	
LOW GEAR,OUTPUT SHAFT (Ref # 39)	13129-054	
WASHER,PLAIN (Ref # 40)	92022-273	
WASHER,PLAIN (Ref # 41)	92022-267	
IDLE GEAR,KICKSTARTER (Ref # 42)	13073-011	
CIRCLIP,13MM (Ref # 43)	480J1300	
BOLT,HEX HEAD,10X14 (Ref # 44)	113G1014	
GASKET CHECK VALVE (Ref # 45)	92065-058	