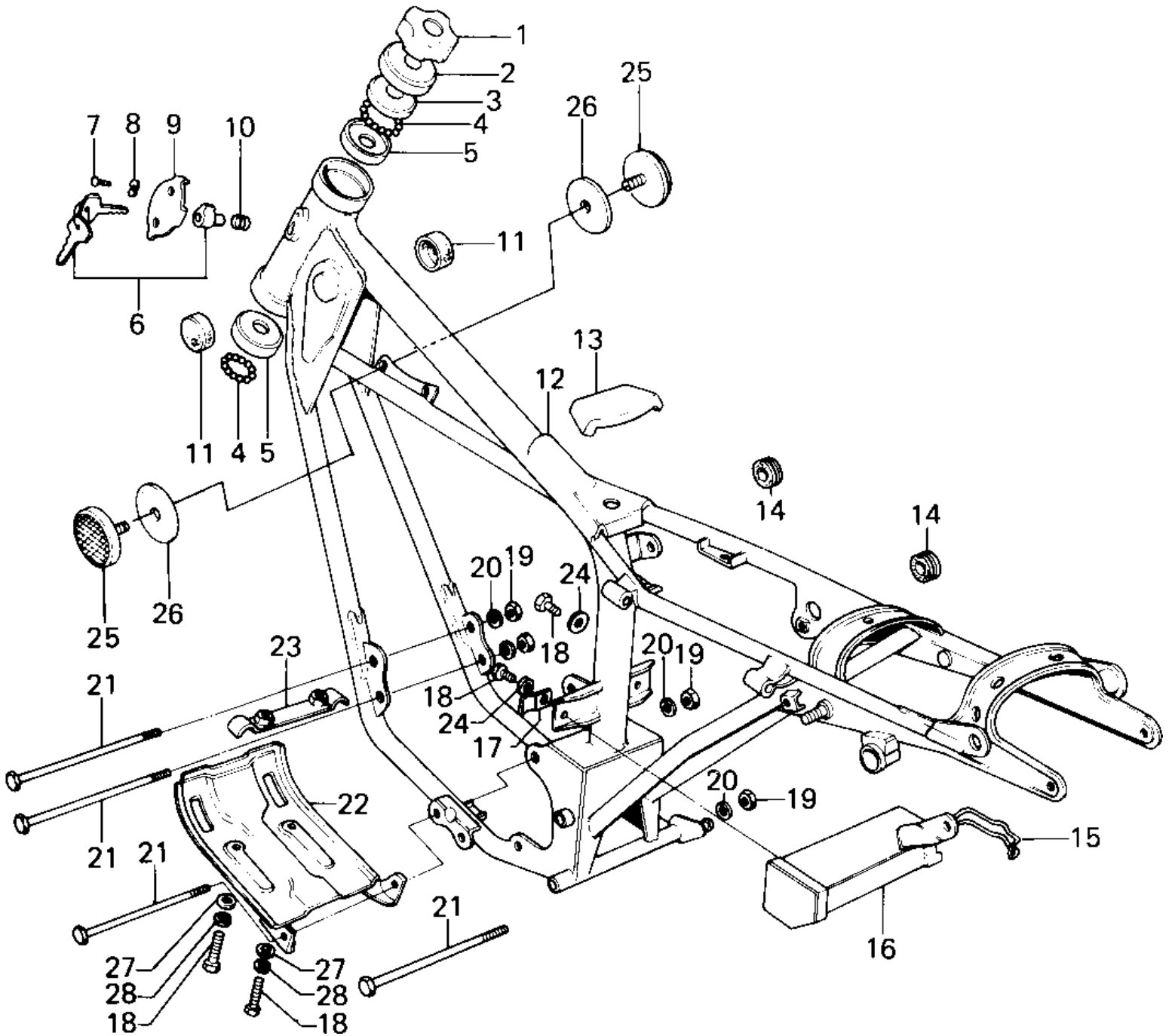


1976 KE100 PARTS DIAGRAM

FRAME/FRAME FITTINGS



1976 KE100 PARTS LIST

FRAME/FRAME FITTINGS

| ITEM NAME | PART NUMBER | QUANTITY |
|----------------------------------|-------------|----------|
| NUT STEERING STEM LCK (Ref # 1) | 92090-006 | 1 |
| CAP STEERING STEM (Ref # 2) | 46098-004 | 1 |
| CONE UPPER BEARING (Ref # 3) | 92047-005 | 1 |
| BALL STEEL 3/16" (Ref # 4) | 600A0600 | 46 |
| RACE BEARING (Ref # 5) | 92048-004 | 2 |
| LOCK ASSY,STEERING (Ref # 6) | 27016-042 | 1 |
| SCREW-TAPPING (Ref # 7) | 92008-007 | 1 |
| WASHER (Ref # 8) | 92097-003 | 1 |
| CAP,STEERING LOCK (Ref # 9) | 11012-1134 | 1 |
| CAP,STEERING LOCK (Ref # 9) | 11012-1134 | 1 |
| SPRING-STEERING LOCK (Ref # 10) | 27032-001 | 1 |
| DAMPER RUBBER-FL TANK (Ref # 11) | 92075-101 | 2 |
| FRAME (Ref # 12) | 32002-137 | 1 |
| FRAME (Ref # 12) | 32002-1042 | 1 |
| FRAME-COMP (Ref # 12) | 32002-1253 | 1 |
| DAMPER RUBBER-FL TANK (Ref # 13) | 92075-106 | 1 |
| GROMMET (Ref # 14) | 92071-056 | 3 |
| FASTENER-TOOL CASE (Ref # 15) | 92079-002 | 1 |
| CASE-TOOL (Ref # 16) | 32098-018 | 1 |
| CLAMP-BREATHER PIPE (Ref # 17) | 92037-070 | 1 |
| BOLT-UPSET 6X14 (Ref # 18) | 112B0614 | 4 |
| NUT,10MM (Ref # 19) | 314B1000 | 4 |
| WASHER SPRING 10MM (Ref # 20) | 461F1000 | 4 |
| BOLT,FLANGED,10X115 (Ref # 21) | 92001-1603 | 4 |
| GUARD,ENGINE (Ref # 22) | 55011-018 | 1 |
| BRACKET,ENGINE GUARD (Ref # 23) | 55016-007 | 1 |
| WASHER PLAIN 6MM (Ref # 24) | 411B0600 | 2 |
| REFLECTOR,REFLEX,REAR (Ref # 25) | 28012-009 | 2 |
| DAMPER RUBBER,REFLECT (Ref # 26) | 92094-011 | 2 |

1976 KE100 PARTS LIST

FRAME/FRAME FITTINGS

| ITEM NAME | PART NUMBER | QUANTITY |
|------------------------------|-------------|----------|
| WASHER PLAIN 6MM (Ref # 27) | 410B0600 | 2 |
| WASHER SPRING 6MM (Ref # 28) | 461F0600 | 2 |