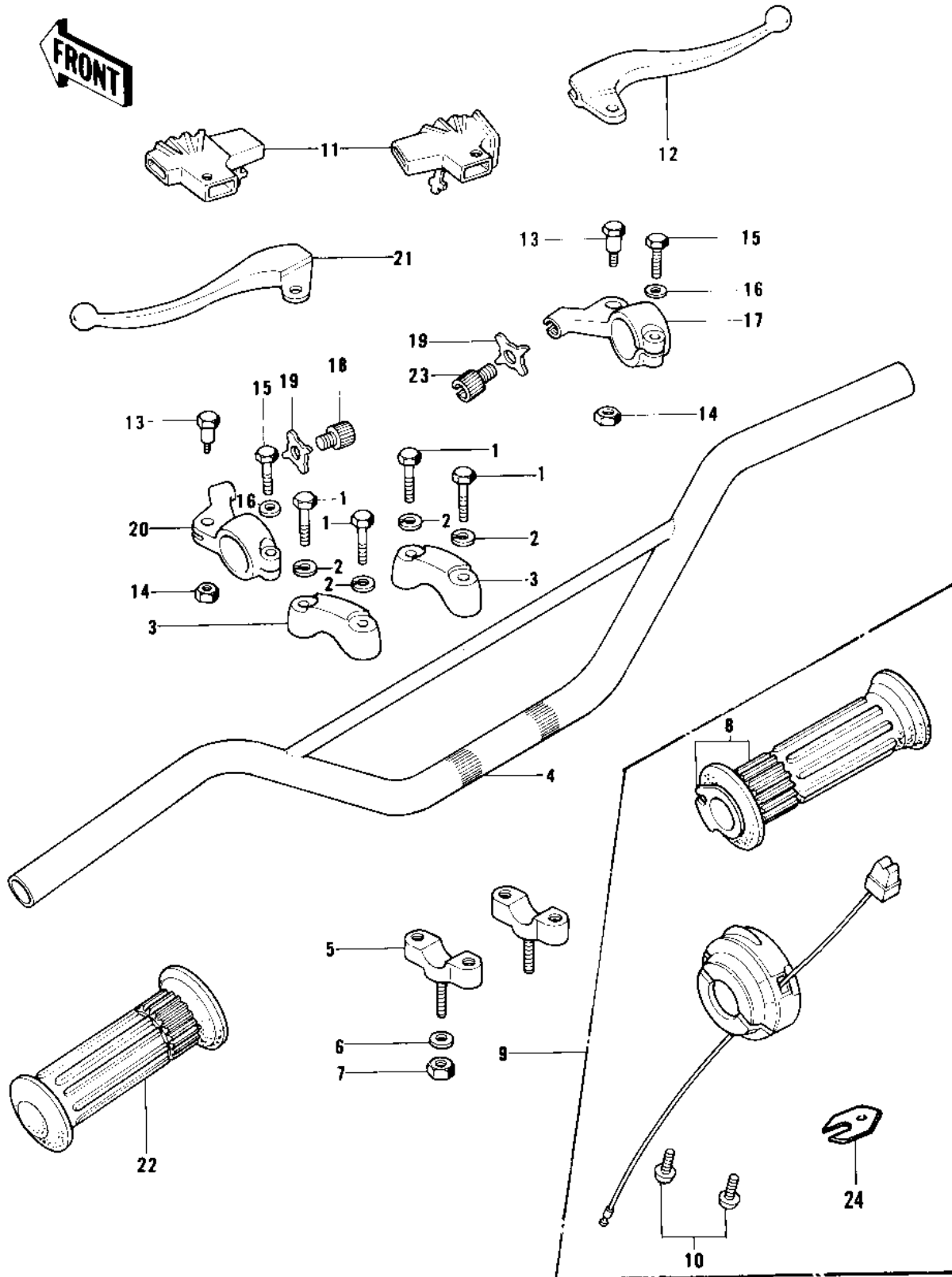


## 1978 KD100-M3 PARTS DIAGRAM

HANDLEBAR



## 1978 KD100-M3 PARTS LIST

### HANDLEBAR

ITEM NAME	PART NUMBER	QUANTITY
BOLT 8X38 (Ref # 1)	92001-1405	1
WASHER SPRING 8MM (Ref # 2)	461F0800	1
HOLDER UPPER HANDLEBAR (Ref # 3)	46012-004	1
HANDLEBAR (Ref # 4)	46004-024	1
HOLDER,HANDLEBAR,BUFF (Ref # 5)	46012-002-80	1
WASHER SPRING 10MM (Ref # 6)	461F1000	1
NUT,10MM (Ref # 7)	314B1000	1
GRIP ASSY,THROTTLE (Ref # 8)	46019-039	1
CASE ASSY,R.H (Ref # 9)	46018-047	1
SCREW-PAN-CROS,5X25 (Ref # 10)	220B0525	1
BOOTS,LEVER HOLDER (Ref # 11)	49006-1017	1
LEVER FRONT BRAKE (Ref # 12)	46058-004	1
BOLT,HEX HEAD,5X22 (Ref # 13)	92007-046	1
NUT-LOCK,5MM (Ref # 14)	92019-014	1
BOLT, HEX HEAD 6X22 (Ref # 15)	110N0622	1
BOLT HEX HEAD 6X25 (Ref # 15)	110N0625	1
WASHER PLAIN 6MM (Ref # 16)	411B0600	1
HOLDER-FR BRAKE LEVER (Ref # 17)	46060-006	1
SCREW,CABLE ADJUST (Ref # 18)	46055-009	2
SCREW CABLE ADJUST (Ref # 18)	46055-003	1
NUT-LOCK (Ref # 19)	46056-005	1
HOLDER,CLUTCH LEVER (Ref # 20)	46094-010	1
HOLDER,CL LEVER,F.BLK (Ref # 20)	46094-015-21	1
LEVER-CLUTCH (Ref # 21)	46092-015	1
RUBBER,L.H GRIP (Ref # 22)	46075-029	1
SCREW,CABLE ADJUST (Ref # 23)	46055-010	1
HOLDER,CONTROL (Ref # 24)	46037-024	1