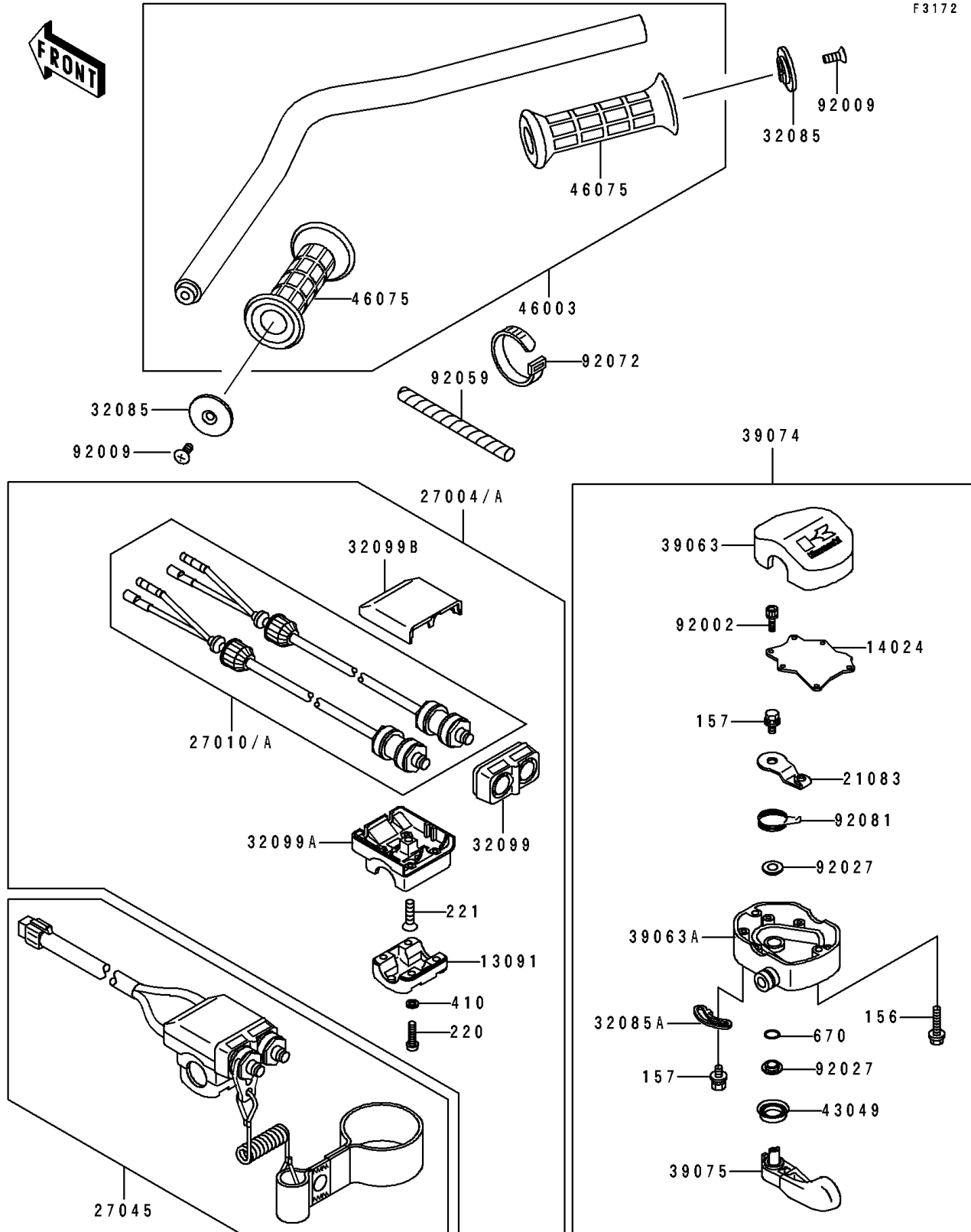


1992 550 SX PARTS DIAGRAM

Handlebar

F3172



1992 550 SX PARTS LIST

Handlebar

ITEM NAME	PART NUMBER	QUANTITY
HOLDER,SWITCH (Ref # 13091)	13091-3726	1
COVER,THROTTLE LEVER (Ref # 14024)	14024-3701	1
ARM,THROTTLE LEVER (Ref # 21083)	21083-3701	1
SWITCH-ASSY,STOP&START (Ref # 27004A)	27004-3716	1
SWITCH,STOP&START (Ref # 27010A)	27010-3726	1
SWITCH-ASSY,STOP&START (Ref # 27045)	27045-3707	1
STOPPER (Ref # 32085)	32085-3705	2
STOPPER (Ref # 32085A)	32085-3709	1
CASE,FR,SWITCH (Ref # 32099)	32099-3724	1
CASE,LWR,SWITCH (Ref # 32099A)	32099-3725	1
CASE,UPP,SWITCH (Ref # 32099B)	32099-3726	1
HOUSING-CONTROL,UPP (Ref # 39063)	39063-3703	1
HOUSING-CONTROL,LWR (Ref # 39063A)	39063-3707	1
LEVER-ASSY-THROTTLE (Ref # 39074)	39074-3711	1
LEVER-THROTTLE (Ref # 39075)	39075-3704	1
PACKING,THROTTLE LEVER (Ref # 43049)	43049-3701	1
HANDLE (Ref # 46003)	46003-3713	1
GRIP,HANDLEBAR (Ref # 46075)	46075-3713	2
BOLT,SOCKET,3X10 (Ref # 92002)	92002-3751	6
SCREW,6X16 (Ref # 92009)	92009-3703	2
COLLAR,THROTTLE LEVER (Ref # 92027)	92027-3704	2
TUBE,SPIRAL (Ref # 92059)	92059-3010	2
BAND,L=149 (Ref # 92072)	92072-031	1
SPRING,THROTTLE LEVER RETURN (Ref # 92081)	92081-3702	1
BOLT-WP,5X25 (Ref # 156)	156R0525	2
BOLT-WSP,5X12 (Ref # 157)	157R0512	2
SCREW-PAN-CROS,5X20 (Ref # 220)	220R0520	4
SCREW-CSK-CROS,6X25 (Ref # 221)	221R0625	1
W-PLAIN-S,5MM (Ref # 410)	410S0500	4

1992 550 SX PARTS LIST

Handlebar

ITEM NAME	PART NUMBER	QUANTITY
O RING,8MM (Ref # 670)	670B1508	1