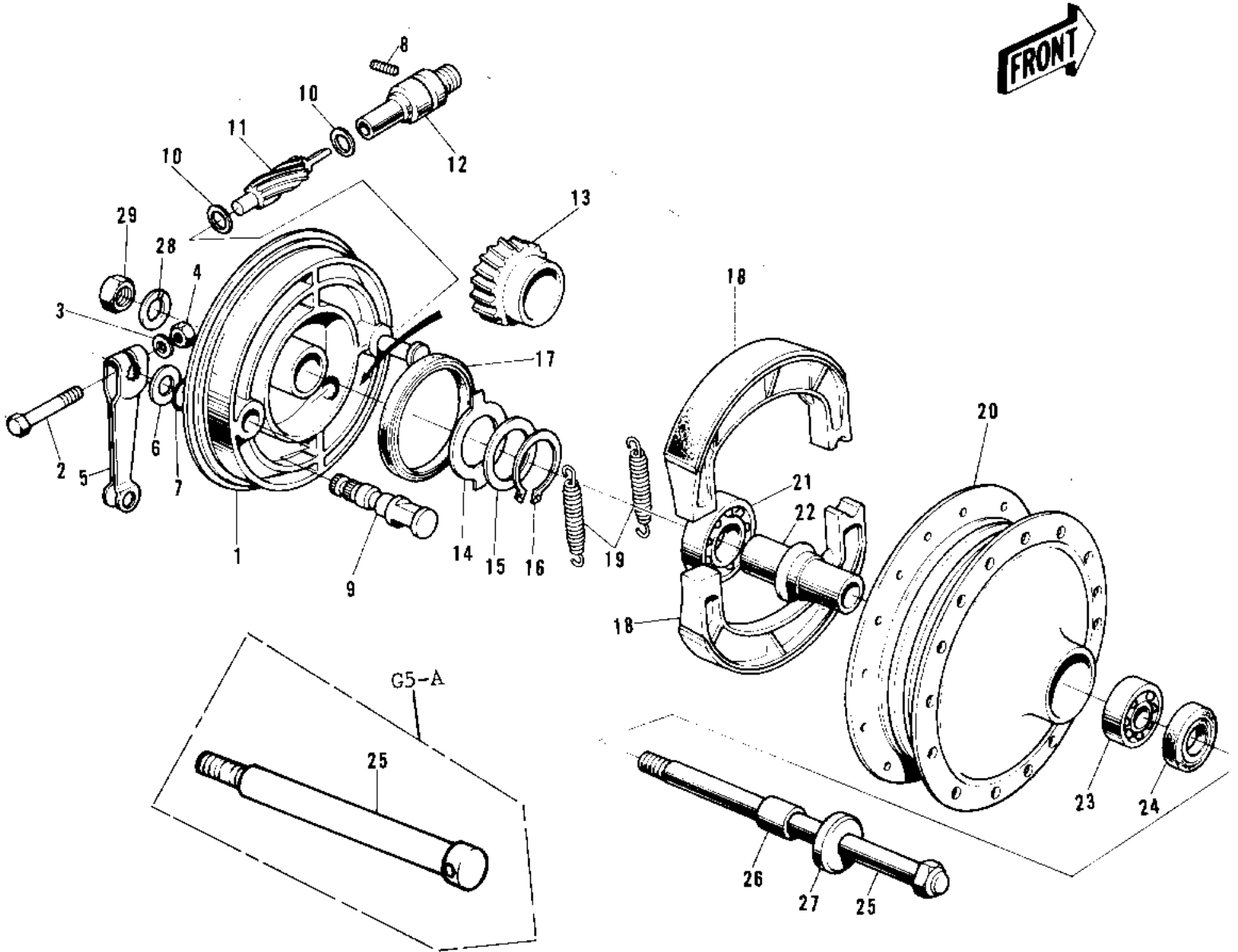


# 1973 G5-A PARTS DIAGRAM

FRONT HUB/BRAKE (72-73 G5-A)



# 1973 G5-A PARTS LIST

## FRONT HUB/BRAKE ('72-'73 G5-A)

| ITEM NAME                          | PART NUMBER  | QUANTITY |
|------------------------------------|--------------|----------|
| PANEL-ASY,FR BRK BUFF (Ref # 1~19) | 41035-071-80 |          |
| BOLT-UPSET (Ref # 2)               | 112G0630     |          |
| BOLT-UPSET (Ref # 2)               | 112G0630     |          |
| WASHER PLAIN 6MM (Ref # 3)         | 410B0600     |          |
| NUT 6MM (Ref # 4)                  | 311B0600     |          |
| LEVER FRONT BRAKE CAM (Ref # 5)    | 41053-005    |          |
| WASHER BRAKE CAM SHT (Ref # 6)     | 41052-001    |          |
| "0" RING,11MM (Ref # 7)            | 92055-004    |          |
| SCREW BUSHING SET (Ref # 8)        | 41070-001    |          |
| CAM SHAFT-FRONT BRAKE (Ref # 9)    | 41050-018    |          |
| WASHER THRST SPD PINI (Ref # 10)   | 41063-001    |          |
| PINION SPEEDOMETER (Ref # 11)      | 41060-004    |          |
| BUSH SPEEDMETER CABLE (Ref # 12)   | 41062-001    |          |
| GEAR SPEEDOMETER (Ref # 13)        | 41059-006    |          |
| RECIEVER SPEED GEAR (Ref # 14)     | 41064-002    |          |
| WASHER SPEED GR THRST (Ref # 15)   | 41065-002    |          |
| CIRCLIP 15MM (Ref # 16)            | 480J1500     |          |
| OIL SEAL BRAKE PANEL (Ref # 17)    | 92050-002    |          |
| SHOE-BRAKE (Ref # 18)              | 41048-1085   |          |
| SPRING,BRAKE SHOE (Ref # 19)       | 92081-1766   |          |
| DRUM-ASSY,FR BRK (Ref # 20~21)     | 41034-1040   |          |
| BEARING BALL #6300Z (Ref # 21)     | 601B6300Z    |          |
| SPACER FRONT HUB (Ref # 22)        | 41039-002    |          |
| BEARING BALL #6200 (Ref # 23)      | 601B6200     |          |
| OIL SEAL FRONT DRUM (Ref # 24)     | 92050-003    |          |
| AXLE-FRONT (Ref # 25)              | 41068-039    |          |
| AXLE-FRONT (Ref # 25)              | 41068-039    |          |
| COLLAR FRONT HUB R.H (Ref # 26)    | 41069-002    |          |
| DUST SHIELD FRNT DRUM (Ref # 27)   | 41042-002    |          |