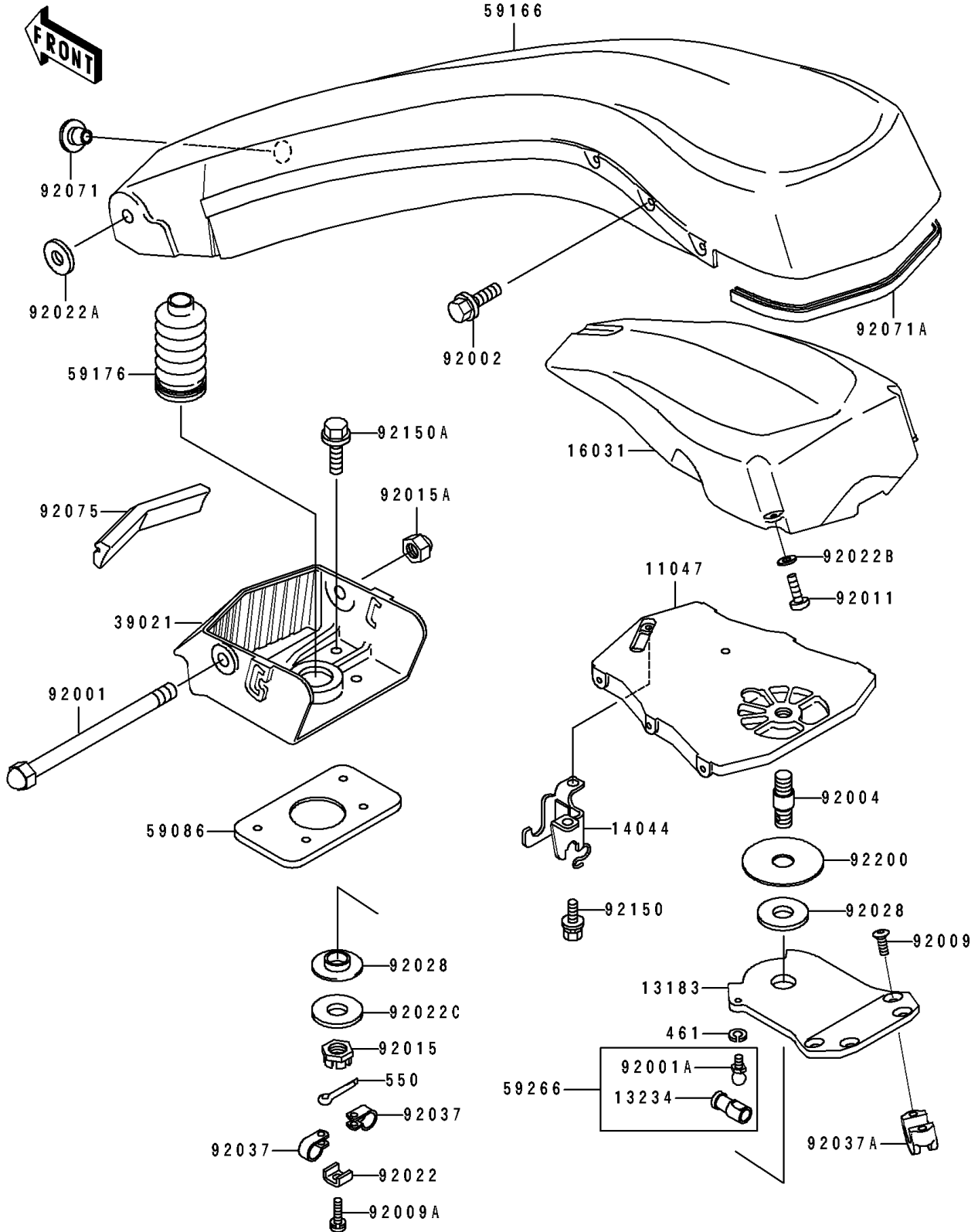


# 1994 550 SX PARTS DIAGRAM

## Handle Pole

F3171



# 1994 550 SX PARTS LIST

## Handle Pole

ITEM NAME	PART NUMBER	QUANTITY
BRACKET,SUPPORT (Ref # 11047)	11047-3755	1
PLATE,HANDLEBAR (Ref # 13183)	13183-3770	1
SHAFT-COMP,JOINT (Ref # 13234)	13234-3708	1
HOLDER-CABLE (Ref # 14044)	14044-3710	1
FLOAT (Ref # 16031)	16031-506	1
BRACKET-HANDLE POLE,JET WHITE (Ref # 39021)	39021-3701-8C	1
BRACKET,PLATE,HANDLE (Ref # 59086)	59086-538	1
POLE-HANDLE,JET WHITE (Ref # 59166)	59166-3002-8C	1
CAP. (Ref # 59176)	59176-514	1
JOINT-BALL (Ref # 59266)	59266-3707	1
BOLT,14X183 (Ref # 92001)	92001-3018	1
BOLT,BALL,6MM (Ref # 92001A)	92001-3703	1
BOLT,6X16 (Ref # 92002)	92002-3728	6
STUD (Ref # 92004)	92004-3728	1
SCREW,8X22 (Ref # 92009)	92009-3701	4
SCREW,5X16 (Ref # 92009A)	92009-3736	1
SCREW (Ref # 92011)	92011-562	3
NUT,CASTLE,18MM (Ref # 92015)	92015-3006	1
NUT,14MM (Ref # 92015A)	92015-507	1
WASHER,CLAMP (Ref # 92022)	92022-3014	1
WASHER,15X36X4.5 (Ref # 92022A)	92022-3024	2
WASHER (Ref # 92022B)	92022-563	3
WASHER (Ref # 92022C)	92022-571	1
BUSHING (Ref # 92028)	92028-3743	2
CLAMP,LEAD WIRE (Ref # 92037)	92037-3007	2
CLAMP,HANDLEBAR (Ref # 92037A)	92037-503	2
GROMMET (Ref # 92071)	92071-530	1
GROMMET (Ref # 92071A)	92071-534	1
DAMPER (Ref # 92075)	92075-519	1

# 1994 550 SX PARTS LIST

## Handle Pole

<b>ITEM NAME</b>	<b>PART NUMBER</b>	<b>QUANTITY</b>
BOLT,6X12 (Ref # 92150)	92150-3709	2
BOLT,8X30 (Ref # 92150A)	92150-3721	4
WASHER,20.5X80X1 (Ref # 92200)	92200-3709	1
WASHER-SPRING,6MM (Ref # 461)	461S0600	1
PIN-COTTER,4X40 (Ref # 550)	550S4040	1