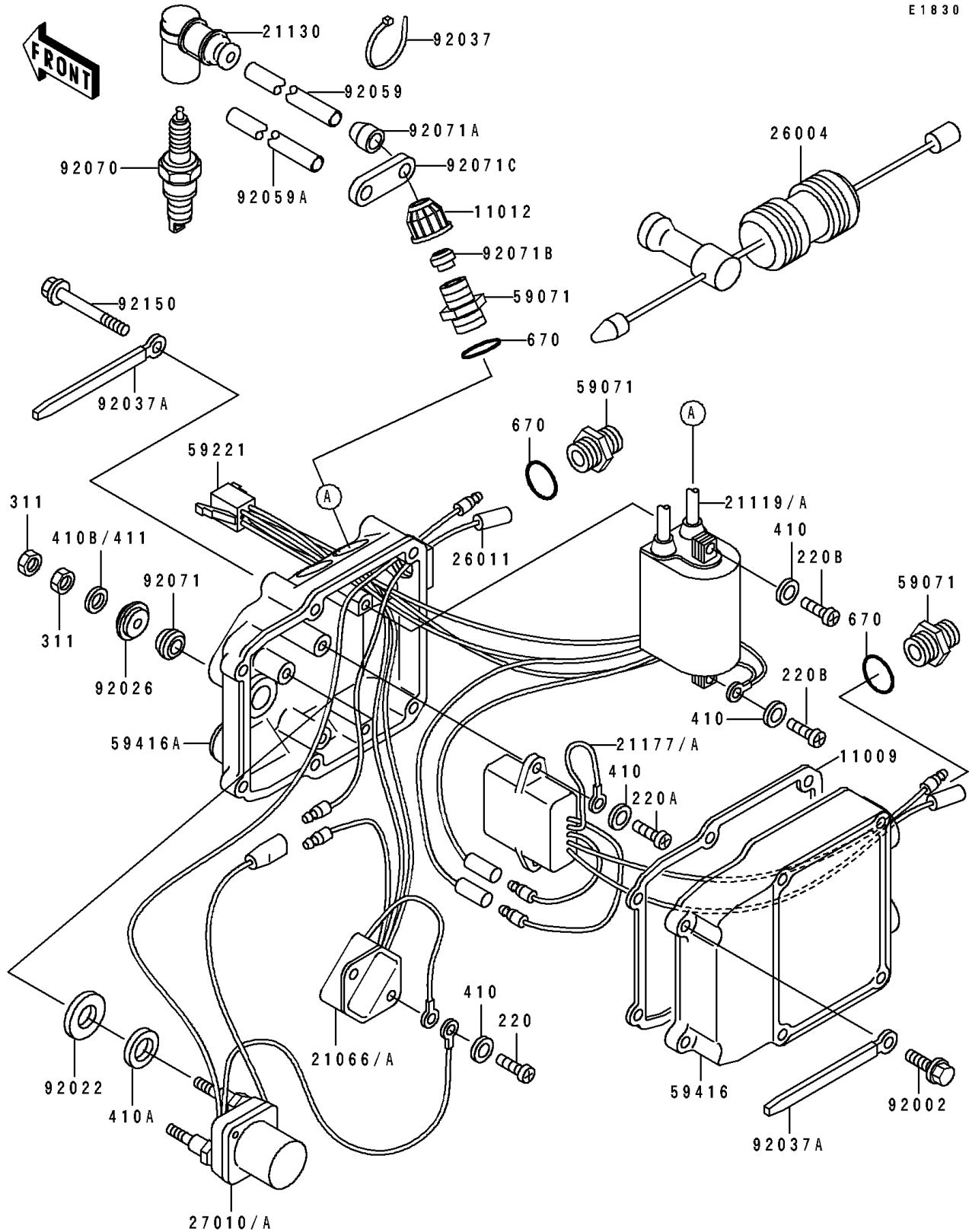


# 1992 550 SX PARTS DIAGRAM

## Ignition System

E1830



# 1992 550 SX PARTS LIST

## Ignition System

ITEM NAME	PART NUMBER	QUANTITY
GASKET,ELECTRIC CASE (Ref # 11009)	11009-3781	1
CAP (Ref # 11012)	11012-3005	2
REGULATOR-VOLTAGE (Ref # 21066A)	21066-3710	1
IGNITER (Ref # 21119A)	21119-3723	1
CAP-SPARK PLUG (Ref # 21130)	21130-3706	2
CONTROLLER (Ref # 21177A)	21177-3703	1
FUSE-ASSY (Ref # 26004)	26004-3711	1
SWITCH,STARTER RELAY (Ref # 27010A)	27010-3724	1
JOINT (Ref # 59071)	59071-3001	4
CONNECTOR-CORD (Ref # 59221)	59221-505	1
CASE-ELECTRIC,RR (Ref # 59416)	59416-3003-YR	1
CASE-ELECTRIC,FR (Ref # 59416A)	59416-3004-YR	1
BOLT,6X25 (Ref # 92002)	92002-3714	2
WASHER (Ref # 92022)	92022-3035	2
SPACER (Ref # 92026)	92026-3703	2
CLAMP (Ref # 92037)	92037-1173	2
CLAMP,L=100 (Ref # 92037A)	92037-3736	2
TUBE,7.5X10X250 (Ref # 92059)	92059-2153	1
TUBE,7.5X10X130 (Ref # 92059A)	92059-2154	1
PLUG-SPARK,BR8ES(NGK) (Ref # 92070)	92070-2078	2
GROMMET (Ref # 92071)	92071-3004	2
GROMMET (Ref # 92071A)	92071-517	2
GROMMET (Ref # 92071B)	92071-527	2
GROMMET (Ref # 92071C)	92071-529	1
BOLT,6X80 (Ref # 92150)	92150-3761	4
SCREW-PAN-CROS,6X12 (Ref # 220)	220B0612	2
SCREW-PAN-CROS,6X16 (Ref # 220A)	220B0616	2
SCREW-PAN-CROS,6X20,WHITE (Ref # 220B)	220B0620	2
NUT-HEX,6MM (Ref # 311)	311R0600	4

# 1992 550 SX PARTS LIST

## Ignition System

ITEM NAME	PART NUMBER	QUANTITY
WASHER-PLAIN-SMALL,6MM (Ref # 410)	410B0600	6
WASHER-PLAIN-SMALL,10MM (Ref # 410A)	410B1000	2
WASHER-PLAIN-SMALL,6MM (Ref # 410B)	410S0600	2
O RING,16MM (Ref # 670)	670B2016	4