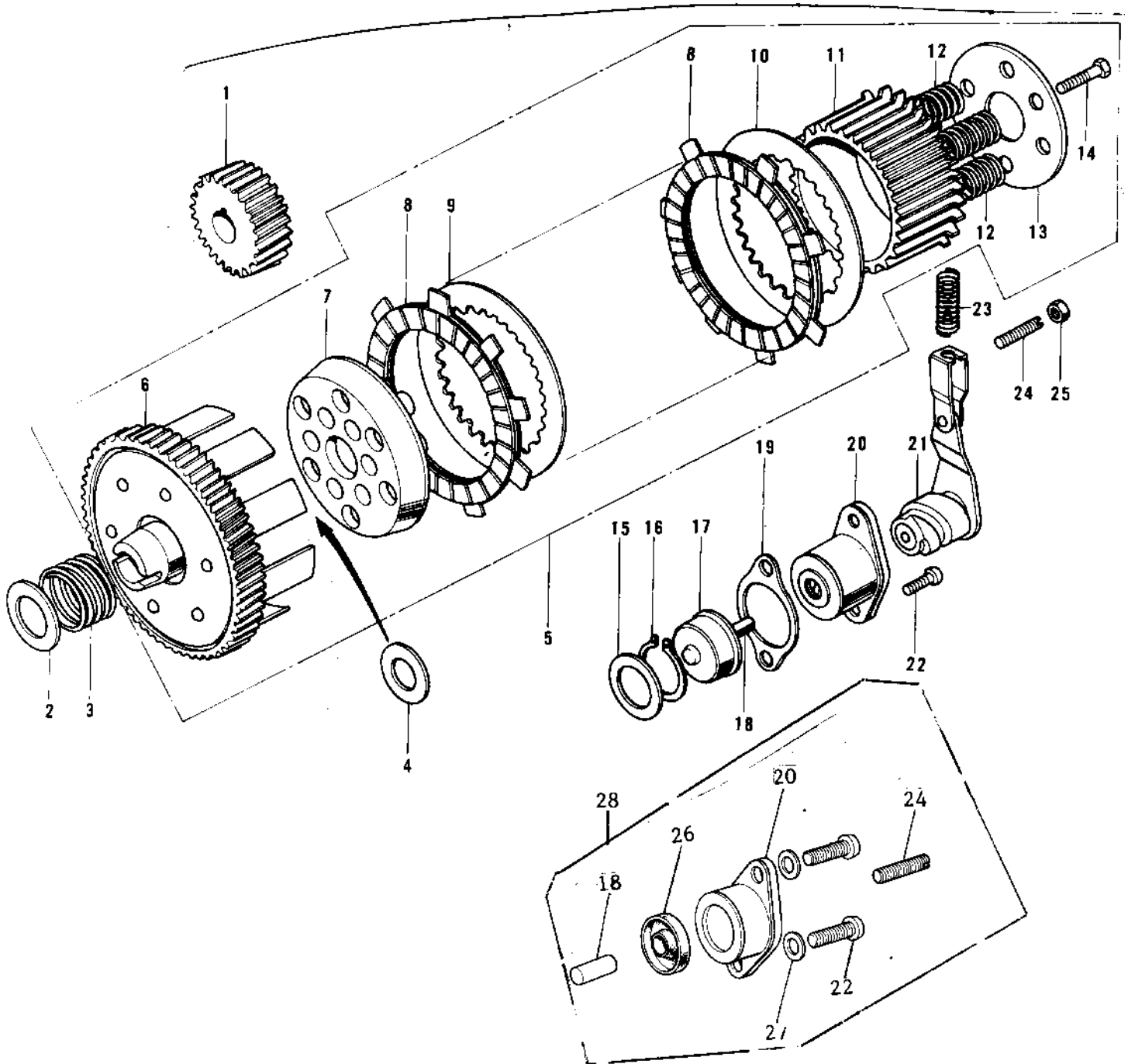


1974 G3SS-D PARTS DIAGRAM

CLUTCH ('74-'75)



1974 G3SS-D PARTS LIST

CLUTCH ('74-'75)

| ITEM NAME | PART NUMBER | QUANTITY |
|----------------------------------|-------------|----------|
| PINION,PRIMARY (Ref # 1) | 13121-032 | 1 |
| WASHER PLAIN (Ref # 2) | 92022-057 | 1 |
| SPRING CLUTCH DAMPER (Ref # 3) | 92081-015 | 1 |
| WASHER THRUST CLUTCH (Ref # 4) | 92022-054 | 1 |
| CLUTCH-ASSY (Ref # 5) | 13081-028 | 1 |
| HOUSING CLUTCH (Ref # 6) | 13095-022 | 1 |
| WHEEL,CLUTCH (Ref # 7) | 13086-1002 | 1 |
| PLATE-FRICTION (Ref # 8) | 13088-1103 | 1 |
| PLATE-CLUTCH,STEEL (Ref # 9) | 13089-1009 | 1 |
| PLATE CLUTCH OUTER (Ref # 10) | 13090-004 | 1 |
| HUB,CLUTCH (Ref # 11) | 13087-1011 | 1 |
| SPRING CLUTCH (Ref # 12) | 92081-012 | 1 |
| HOLDER,CLUTCH SPRING (Ref # 13) | 13091-1115 | 1 |
| BOLT-UPSET (Ref # 14) | 112G0516 | 1 |
| WASHER THRUST (Ref # 15) | 92022-053 | 1 |
| CIRCLIP 16MM (Ref # 16) | 480J1600 | 1 |
| PUSHER CLUTCH SPRING (Ref # 17) | 13113-003 | 1 |
| PIN DOWEL 7X10 (Ref # 18) | 610A0710 | 1 |
| PIN,DOWEL,7X14 (Ref # 18) | 610A0714 | 1 |
| GASKET,CLUTCH RELEASE (Ref # 19) | 11060-1197 | 1 |
| RELEASE SET,CLUTCH (Ref # 20) | 13231-013 | 2 |
| RELEASE-ASSY-CLUTCH (Ref # 20) | 13231-1008 | 2 |
| SCREW PAN HEAD 6X16 (Ref # 22) | 220B0616 | 1 |
| SPRING-CLUTCH RELEASE (Ref # 23) | 92081-096 | 1 |
| SCREW SLOTTED 6X28 (Ref # 24) | 291Z0628 | 2 |
| SCREW,SLOTTED,6X24 (Ref # 24) | 291H0624 | 1 |
| NUT 6MM (Ref # 25) | 311B0600 | 1 |
| OIL SEAL (Ref # 26) | 92050-071 | 1 |
| WASHER PLAIN 6MM (Ref # 27) | 410B0600 | 1 |