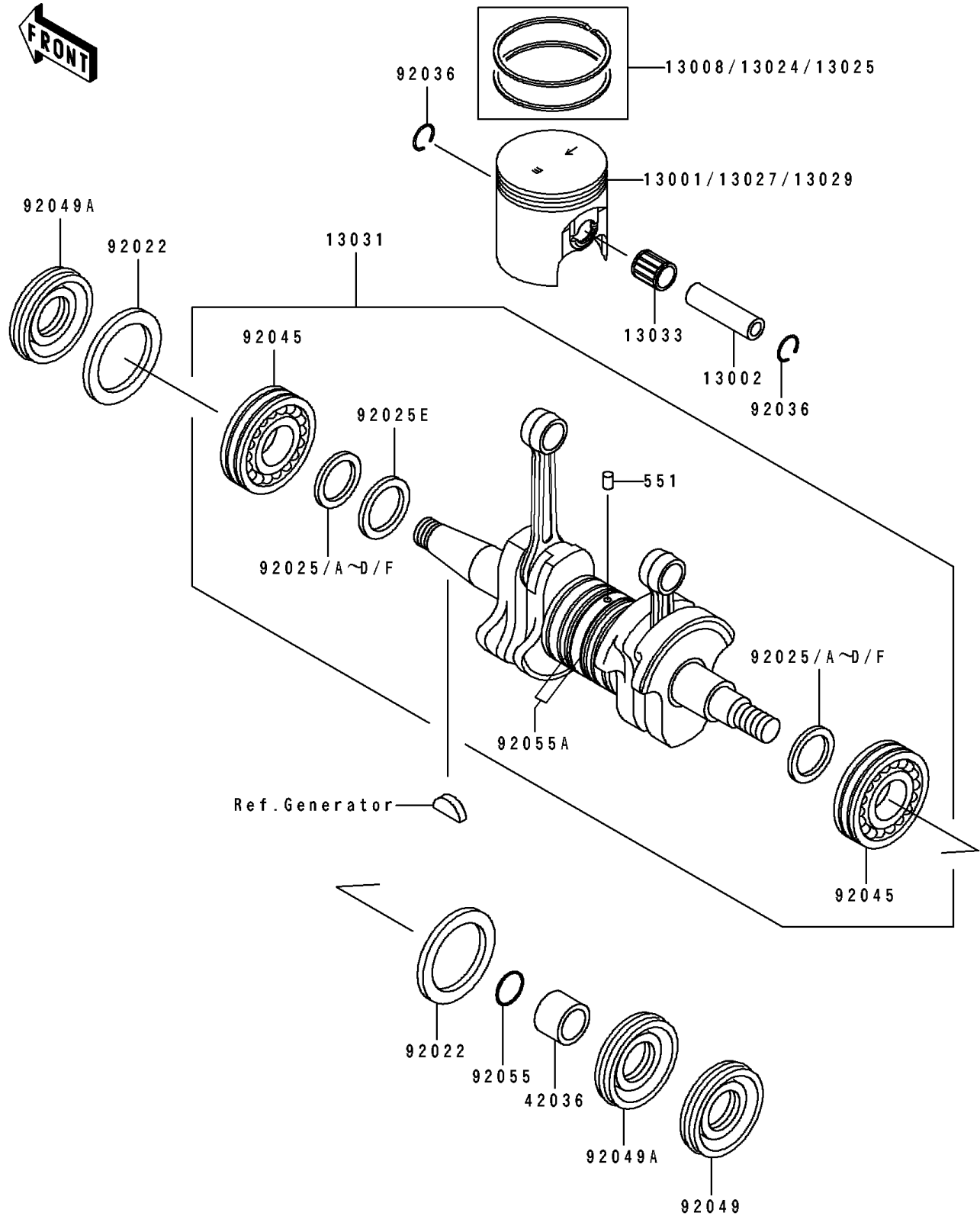


# 1992 550 SX PARTS DIAGRAM

Crankshaft/Piston(s)

E1320



# 1992 550 SX PARTS LIST

## Crankshaft/Piston(s)

| ITEM NAME                                    | PART NUMBER | QUANTITY |
|--|-------------|----------|
| PISTON-ENGINE,STD (Ref # 13001)              | 13001-3704  | 2        |
| PIN-PISTON (Ref # 13002)                     | 13002-504   | 2        |
| RING-SET-PISTON,STD (Ref # 13008)            | 13008-3703  | 2        |
| RING-SET-PISTON LL,O/S 1.00 (Ref # 13024)    | 13024-3703  | 2        |
| RING-SET-PISTON L,O/S 0.50 (Ref # 13025)     | 13025-3703  | 2        |
| PISTON-ENGINE LL,O/S 1.00 (Ref # 13027)      | 13027-3704  | 2        |
| PISTON-ENGINE L,O/S 0.50 (Ref # 13029)       | 13029-3704  | 2        |
| CRANKSHAFT-COMP (Ref # 13031)                | 13031-3715  | 1        |
| BEARING-NEEDLE,KBK16X20X22.8X6 (Ref # 13033) | 13033-3005  | 2        |
| SLEEVE,CRANKSHAFT OUT (Ref # 42036)          | 42036-3007  | 1        |
| WASHER,CRANK,RH (Ref # 92022)                | 92022-3021  | 2        |
| SHIM,T=0.1 (Ref # 92025)                     | 92025-513   | AR       |
| SHIM,T=0.2 (Ref # 92025A)                    | 92025-518   | AR       |
| SHIM,T=0.3 (Ref # 92025B)                    | 92025-523   | AR       |
| SHIM,T=0.4 (Ref # 92025C)                    | 92025-527   | AR       |
| SHIM,T=0.5 (Ref # 92025D)                    | 92025-530   | AR       |
| SHIM,T=1.0MM (Ref # 92025E)                  | 92025-532   | 1        |
| SHIM,T=0.6 (Ref # 92025F)                    | 92025-533   | AR       |
| RING-SNAP (Ref # 92036)                      | 92036-507   | 4        |
| BEARING-BALL (Ref # 92045)                   | 92045-3010  | 2        |
| SEAL-OIL,OIL,TCY306210 (Ref # 92049)         | 92049-3005  | 1        |
| SEAL-OIL,OIL,DCY30629 (Ref # 92049A)         | 92049-3006  | 2        |
| RING-O,22MM (Ref # 92055)                    | 92055-3009  | 1        |
| RING-O (Ref # 92055A)                        | 92055-504   | 2        |
| PIN-DOWEL (Ref # 551)                        | 551A0410    | 1        |