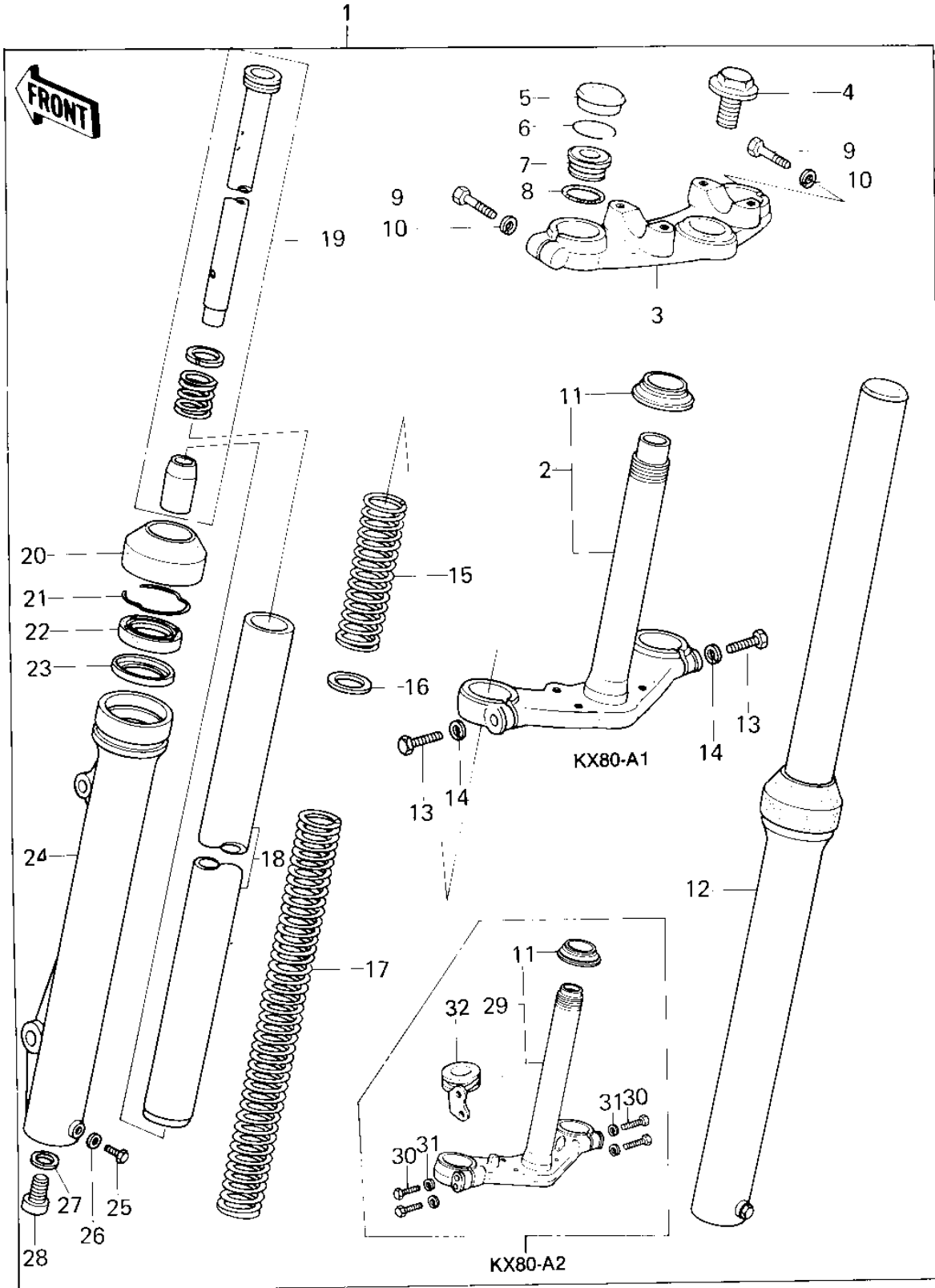


1979 KX80 PARTS DIAGRAM

FRONT FORK



1979 KX80 PARTS LIST

FRONT FORK

| ITEM NAME | PART NUMBER | QUANTITY |
|----------------------------------|-------------|----------|
| FORK-FRONT (Ref # 1) | 44001-1043 | 1 |
| FORK-FRONT (Ref # 1) | 44001-1122 | 1 |
| STEM,STEERING (Ref # 2) | 44037-1011 | 1 |
| HEAD,STEERING STEM (Ref # 3) | 44039-1016 | 1 |
| BOLT,STEERING STEM (Ref # 4) | 92001-1318 | 1 |
| CAP,RUBBER,FORK TOP (Ref # 5) | 11012-1067 | 2 |
| CIRCLIP (Ref # 6) | 44044-023 | 2 |
| GUIDE,SPRING (Ref # 7) | 44029-022 | 2 |
| "O" RING (Ref # 8) | 44046-025 | 2 |
| BOLT,HEX HEAD,8X40 (Ref # 9) | 92001-1063 | 2 |
| WASHER SPRING 8MM (Ref # 10) | 461F0800 | 2 |
| CONE STERNG BERG LOW (Ref # 11) | 92047-010 | 1 |
| TUBE,RH,FORK OUTER (Ref # 12) | 44006-1019 | 1 |
| TUBE,RH,FORK OUTER (Ref # 12) | 44006-1040 | 1 |
| BOLT,HEX HEAD 10X35 (Ref # 13) | 92001-1252 | 2 |
| WASHER SPRING 10MM (Ref # 14) | 461F1000 | 2 |
| SPRING,FORK INNER,UPP (Ref # 15) | 44026-1025 | 2 |
| SPRING,FORK INNER,UP (Ref # 15) | 44026-1047 | 2 |
| GUIDE,FORK SPRING (Ref # 16) | 44028-1002 | 2 |
| SPRING,FORK INNER,LOW (Ref # 17) | 44026-1023 | 2 |
| SPRING,FORK INNER,LOW (Ref # 17) | 44026-1046 | 2 |
| TUBE,FORK INNER (Ref # 18) | 44013-1016 | 2 |
| TUBE,FORK INNER (Ref # 18) | 44013-1031 | 2 |
| CYLINDER-FORK (Ref # 19) | 44022-1017 | 2 |
| CYLINDER-FORK (Ref # 19) | 44022-1035 | 2 |
| DUST SHIELD,FORK OUT (Ref # 20) | 92093-1019 | 2 |
| CIRCLIP,FORK OUTER (Ref # 21) | 92033-1028 | 2 |
| OIL SEAL (Ref # 22) | 92049-1069 | 2 |
| SPACER,FORK OUTER (Ref # 23) | 92026-1041 | 2 |

1979 KX80 PARTS LIST

FRONT FORK

| ITEM NAME | PART NUMBER | QUANTITY |
|---------------------------------|-------------|----------|
| TUBE,LH,FORK OUTER (Ref # 24) | 44005-1019 | 1 |
| TUBE,LH,FORK OUTER (Ref # 24) | 44005-1040 | 1 |
| BOLT HEX HEAD 6X8 (Ref # 25) | 110B0608 | 2 |
| GASKET,DRAIN PLUG (Ref # 26) | 44045-047 | 2 |
| GASKET,FORK CYL BOLT (Ref # 27) | 44045-051 | 2 |
| BOLT,FORK CYLINDER (Ref # 28) | 44041-078 | 2 |
| STEM,STEERING (Ref # 29) | 44037-1037 | 1 |
| BOLT,HEX HEAD,8X40 (Ref # 30) | 92001-1063 | 4 |
| WASHER SPRING 8MM (Ref # 31) | 461F0800 | 4 |
| CLAMP,CABLE (Ref # 32) | 92072-1039 | 1 |