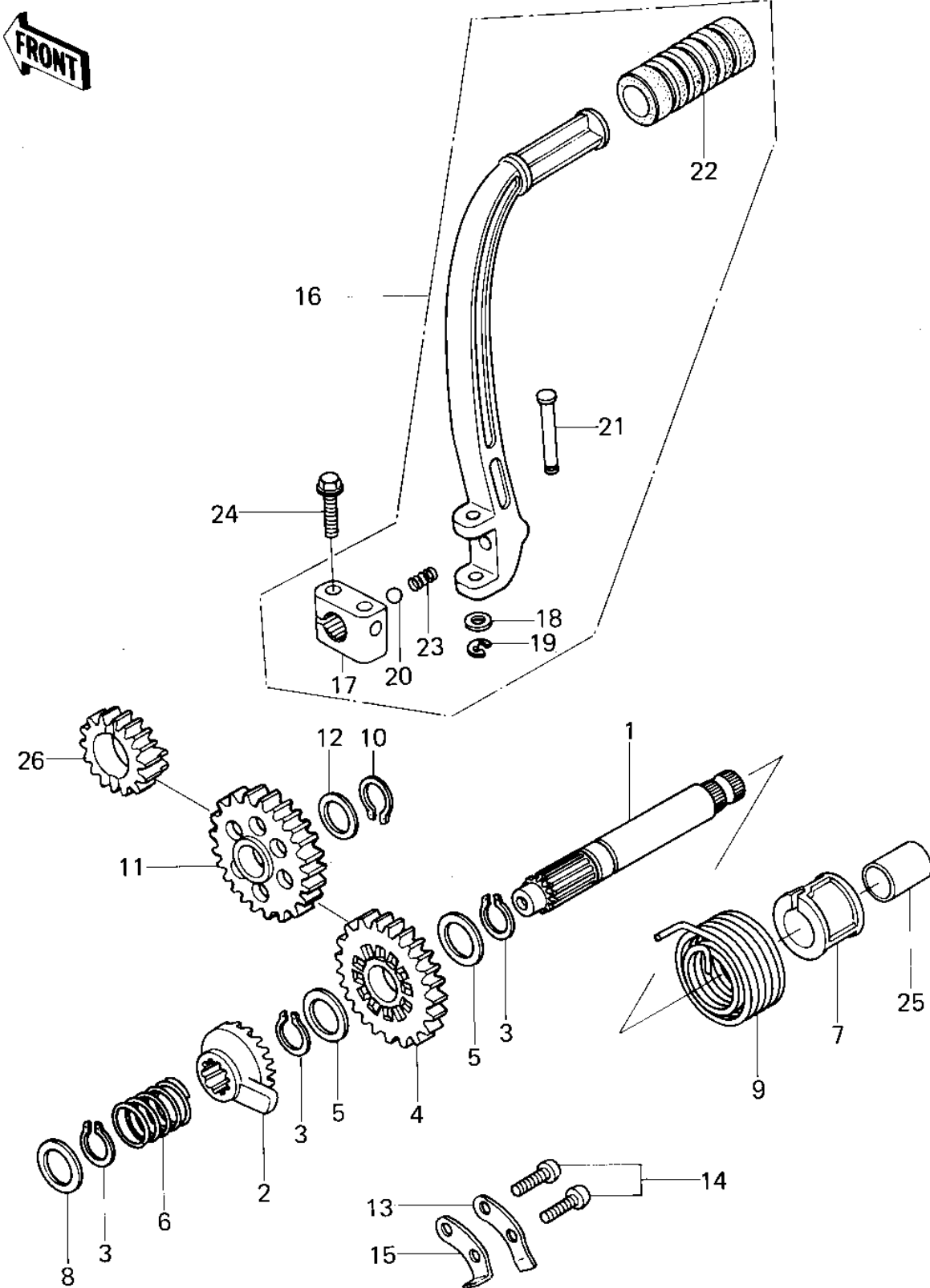


# 1979 KX80 PARTS DIAGRAM

## KICKSTARTER MECHANISM



# 1979 KX80 PARTS LIST

## KICKSTARTER MECHANISM

| ITEM NAME                        | PART NUMBER | QUANTITY |
|----------------------------------|-------------|----------|
| SHAFT,KICK (Ref # 1)             | 13066-1008  | 1        |
| RATCHET (Ref # 2)                | 13078-1001  | 1        |
| CIRCLIP 16MM (Ref # 3)           | 480J1600    | 3        |
| GEAR,KICK,31T (Ref # 4)          | 59051-1015  | 1        |
| WASHER,PLAIN (Ref # 5)           | 92022-315   | 2        |
| SPRING,RATCHET (Ref # 6)         | 92081-122   | 1        |
| GUIDE,KICK (Ref # 7)             | 13070-1018  | 1        |
| WASHER,PLAIN (Ref # 8)           | 92022-269   | 1        |
| SPRING,KICK (Ref # 9)            | 92081-1108  | 1        |
| CIRCLIP 14MM (Ref # 10)          | 480J1400    | 1        |
| CIRCLIP 15MM (Ref # 10)          | 480J1500    | 1        |
| GEAR,IDLE,31T (Ref # 11)         | 59051-1014  | 1        |
| SPACER,15X21X0.5 (Ref # 12)      | 92026-1035  | 1        |
| GUIDE,KICK (Ref # 13)            | 13206-1002  | 1        |
| SCREW PAN HEAD 6X16 (Ref # 14)   | 220B0616    | 2        |
| STOPPER,KICK (Ref # 15)          | 32085-1027  | 1        |
| PEDAL ASSY,KICK (Ref # 16)       | 13064-1010  | 1        |
| BOSS,KICK PEDAL (Ref # 17)       | 13061-1021  | 1        |
| WASHER PLAIN 6MM (Ref # 18)      | 410B0600    | 1        |
| CIRCLIP 5MM (Ref # 19)           | 482K5000    | 1        |
| BALL STEEL 1/4' (Ref # 20)       | 600A0800    | 1        |
| PIN,KICK PEDAL (Ref # 21)        | 92043-1050  | 1        |
| DAMPER RUBB,GEAR CHNG (Ref # 22) | 92075-1021  | 1        |
| SPRING KICK PEDAL (Ref # 23)     | 92081-020   | 1        |
| BOLT,FLANGED,6X22 (Ref # 24)     | 92001-1352  | 1        |
| BOOT,KICK SHAFT (Ref # 25)       | 49006-1023  | 1        |
| GEAR,KICK PINION,18T (Ref # 26)  | 59051-1013  | 1        |