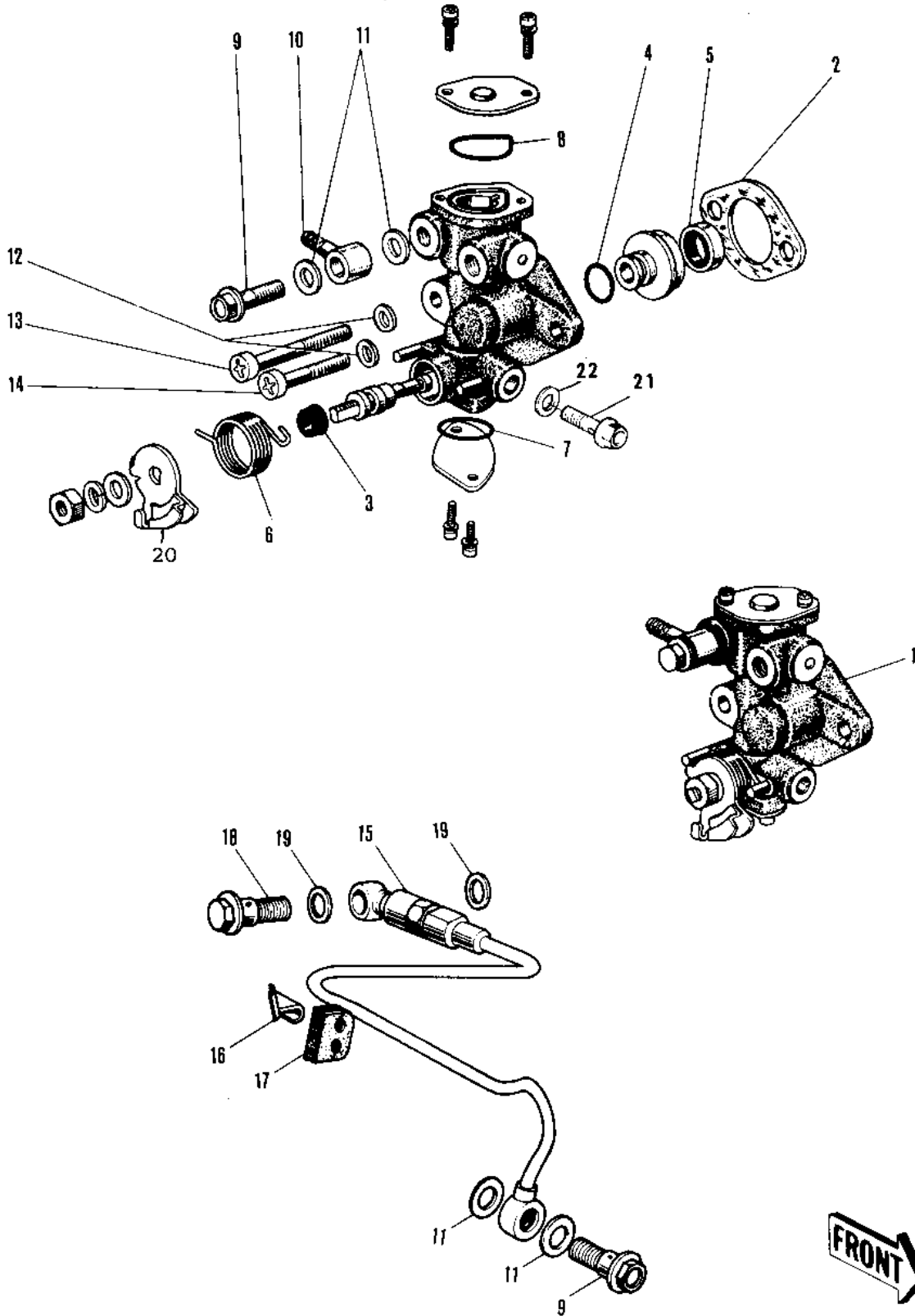


# 1979 KV75-A8 PARTS DIAGRAM

OIL PUMP ('76-'80)



# 1979 KV75-A8 PARTS LIST

## OIL PUMP ('76-'80)

ITEM NAME	PART NUMBER	QUANTITY
OIL PUMP ASSY (Ref # 1)	16082-1004	1
OIL PUMP ASSY (Ref # 1)	16082-1004	1
OIL PUMP ASSY (Ref # 1)	16082-1004	1
GASKET,OIL PUMP (Ref # 2)	11060-1160	1
SEAL-OIL,CAMSHAFT,"X" (Ref # 3)	92049-1294	1
"O" RING,OIL PUMP SHT (Ref # 4)	16090-002	1
OIL SEAL OIL PUMP SHT (Ref # 5)	16091-001	1
SPRING OIL PUMP LEVER (Ref # 6)	16093-004	1
SPRING,OIL PUMP LEVER (Ref # 6)	92081-1048	1
"O" RING,LOWER CAP (Ref # 7)	16090-003	1
"O" RING,LOWER CAP (Ref # 7)	16090-004	1
"O" RING,UPPER CAP (Ref # 8)	16088-002	1
BOLT-BANJO,6MM (Ref # 9)	92060-013	2
BOLT-BANJO,6MM (Ref # 9)	92060-013	2
CONNECTOR BANJO (Ref # 10)	92061-009	1
WASHER OIL PUMP BANJO (Ref # 11)	92022-077	4
WASHER OIL PUMP (Ref # 12)	92022-037	2
SCREW PAN CROSS,5X28 (Ref # 13)	220B0528	1
SCREW-PAN-CROS (Ref # 14)	220B0514	1
PIPE-OIL (Ref # 15)	16134-015	1
BRACKET-OIL PIPE (Ref # 16)	16068-006	1
GROMMET (Ref # 17)	92071-049	1
BOLT-BANJO (Ref # 18)	92060-015	1
GASKET CHECK VALVE (Ref # 19)	92065-023	2
LEVER-OIL PUMP CABLE (Ref # 20)	16096-009	1
BOLT,AIR VENT (Ref # 21)	92009-1010	1
WASHER (Ref # 22)	92022-1006	1