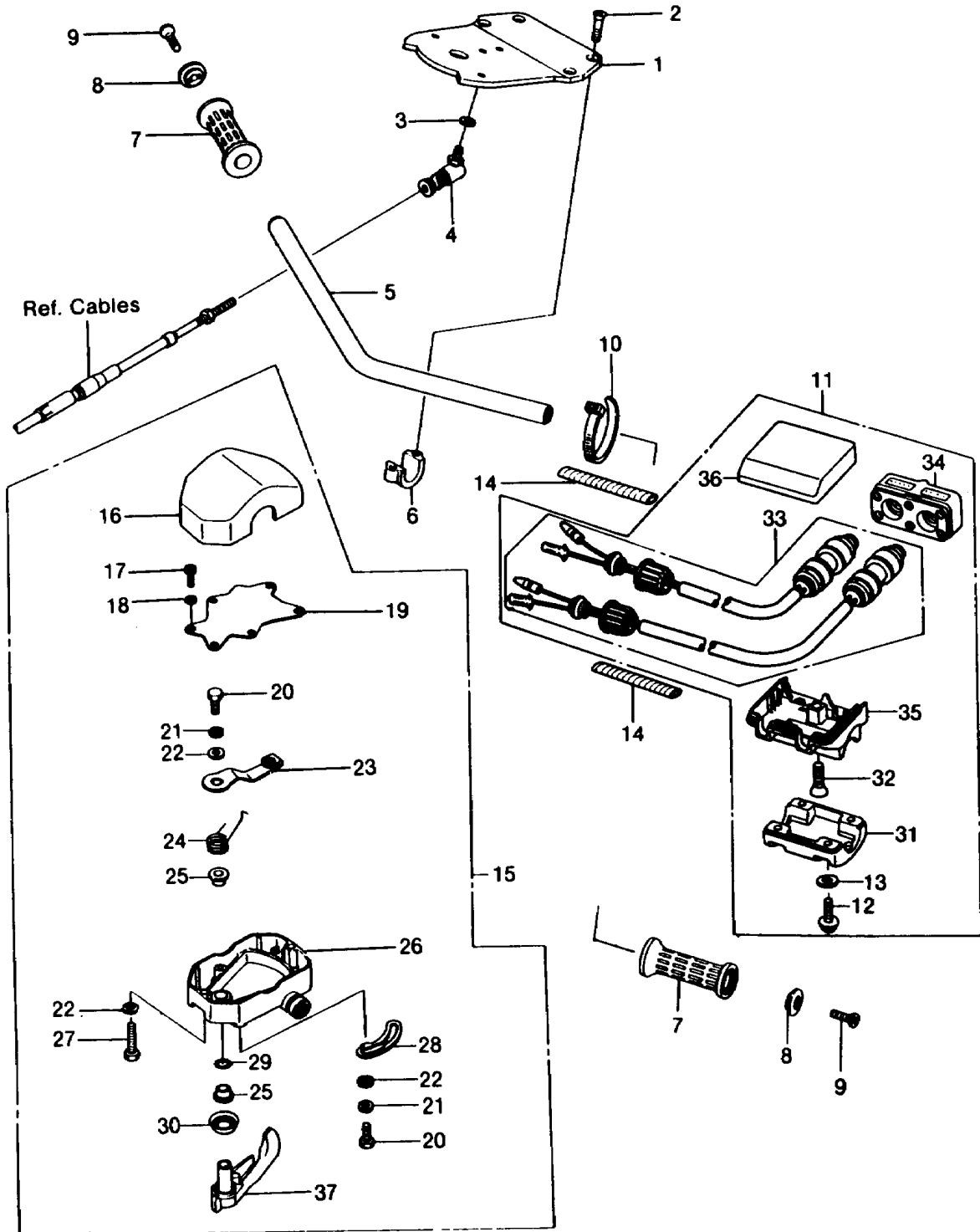


1986 JS550 PARTS DIAGRAM

HANDLEBAR (JS550-A5)



1986 JS550 PARTS LIST

HANDLEBAR (JS550-A5)

| ITEM NAME | PART NUMBER | QUANTITY |
|---|-------------|----------|
| BAND,L=149 (Ref # 10) | 92072-031 | 1 |
| SWITCH-ASSY (Ref # 11) | 27004-3002 | 1 |
| SCREW-PAN-CROS,5X20 (Ref # 12) | 220R0520 | 1 |
| W-PLAIN-S,5MM (Ref # 13) | 410S0500 | 2 |
| TUBE, SPIRAL (Ref # 14) | 92059-3010 | 1 |
| LEVER-ASSY-THROTTLE (Ref # 15) | 39074-3701 | 1 |
| HOUSING-CONTROL,UPP (Ref # 16) | 39063-3701 | 1 |
| BOLT, SOCKET,3X10 (Ref # 17) | 92002-3730 | 1 |
| WASHER-SPRING,3MM (Ref # 18) | 461S0300 | 1 |
| COVER,THROTTLE LEVER (Ref # 19) | 14024-3701 | 1 |
| BOLT,5X10 (Ref # 20) | 110R0510 | 1 |
| WASHER-SPRING,5MM (Ref # 21) | 461S0500 | 1 |
| ARM,THROTTLE LEVER (Ref # 23) | 21083-3701 | 1 |
| SPRING,THROTTLE LEVER RETURN (Ref # 24) | 92081-3702 | 1 |
| COLLAR,THROTTLE LEVER (Ref # 25) | 92027-3704 | 1 |
| HOUSING-CONTROL,LWR (Ref # 26) | 39063-3702 | 1 |
| BOLT,5X25 (Ref # 27) | 110R0525 | 1 |
| STOPPER (Ref # 28) | 32085-3706 | 1 |
| O RING,8MM (Ref # 29) | 670B1508 | 1 |
| PACKING,THROTTLE LEVER (Ref # 30) | 43049-3701 | 1 |
| HOLDER,SWITCH (Ref # 31) | 13091-3726 | 1 |
| SCREW-CSK-CROS,6X25 (Ref # 32) | 221R0625 | 1 |
| SWITCH,STOP&START (Ref # 33) | 27010-3708 | 1 |
| CASE,FR,SWITCH (Ref # 34) | 32099-3724 | 1 |
| CASE,LWR,SWITCH (Ref # 35) | 32099-3725 | 1 |
| CASE,UPP,SWITCH (Ref # 36) | 32099-3726 | 1 |
| LEVER-THROTTLE (Ref # 37) | 39075-3702 | 1 |
| PLATE,HANDLEBAR (Ref # 1) | 13169-3004 | 1 |
| SCREW,8X22 (Ref # 2) | 92009-3701 | 1 |

1986 JS550 PARTS LIST

HANDLEBAR (JS550-A5)

| ITEM NAME | PART NUMBER | QUANTITY |
|-----------------------------|-------------|----------|
| WASHER-SPRING,6MM (Ref # 3) | 461S0600 | 1 |
| JOINT-BALL (Ref # 4) | 59266-3701 | 1 |
| HANDLE (Ref # 5) | 46003-3703 | 1 |
| CLAMP,HANDLEBAR (Ref # 6) | 92037-503 | 1 |
| GRIP,HANDLEBAR (Ref # 7) | 46075-3709 | 1 |
| STOPPER (Ref # 8) | 32085-3705 | 1 |
| SCREW,6X16 (Ref # 9) | 92009-3703 | 1 |