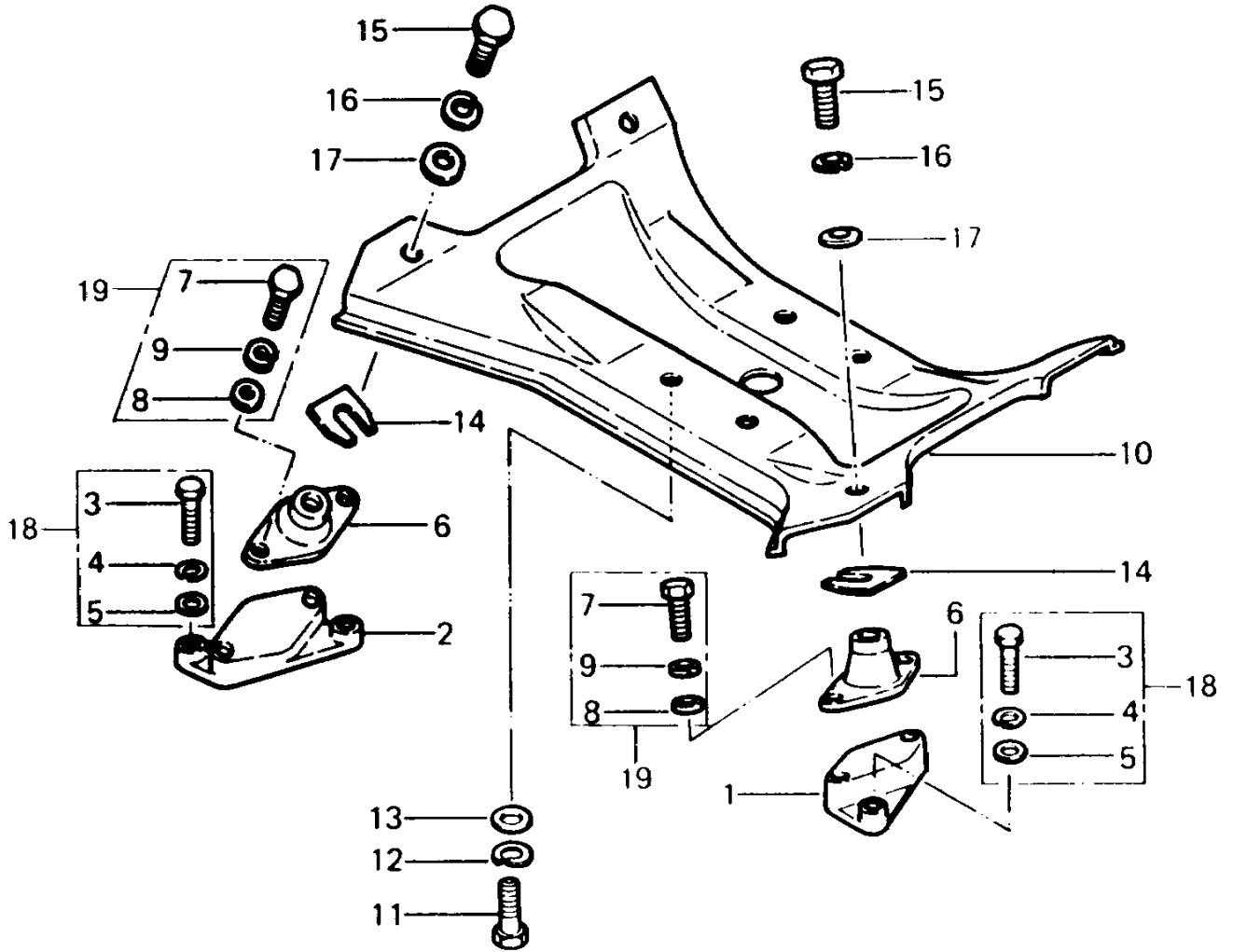


1990 JS440 PARTS DIAGRAM

ENGINE MOUNT



1990 JS440 PARTS LIST

ENGINE MOUNT

| ITEM NAME | PART NUMBER | QUANTITY |
|--------------------------------|--------------|----------|
| MOUNT-ENGINE (Ref # 10) | 59181-509-9G | 1 |
| BOLT,1/2"X31 (Ref # 11) | 92003-533 | 4 |
| WASHER-SPRING,14MM (Ref # 12) | 461S1400 | 4 |
| WASHER-PLAIN,14MM (Ref # 13) | 411S1400 | 4 |
| SHIM,T=0.5MM (Ref # 14A) | 92025-3702 | AR |
| SHIM,T=1.0MM (Ref # 14B) | 92025-3703 | AR |
| SHIM,T=1.5MM (Ref # 14C) | 92025-3704 | AR |
| SHIM,T=0.3MM (Ref # 14) | 92025-3701 | AR |
| BOLT,10X25 (Ref # 15) | 110R1025 | 4 |
| WASHER-SPRING,10MM (Ref # 16) | 461S1000 | 4 |
| WASHER,32X10.5X4 (Ref # 17) | 92022-3023 | 4 |
| BOLT-WSP-SMALL,8X20 (Ref # 18) | 155R0820 | 8 |
| BOLT,8X20 (Ref # 19) | 92150-3713 | 8 |
| BRACKET,ENGINE MOUNT (Ref # 1) | 59016-532 | 2 |
| BRACKET,ENGINE MOUNT (Ref # 2) | 59016-533 | 2 |
| DAMPER,ENGINE (Ref # 6) | 92075-3006 | 4 |