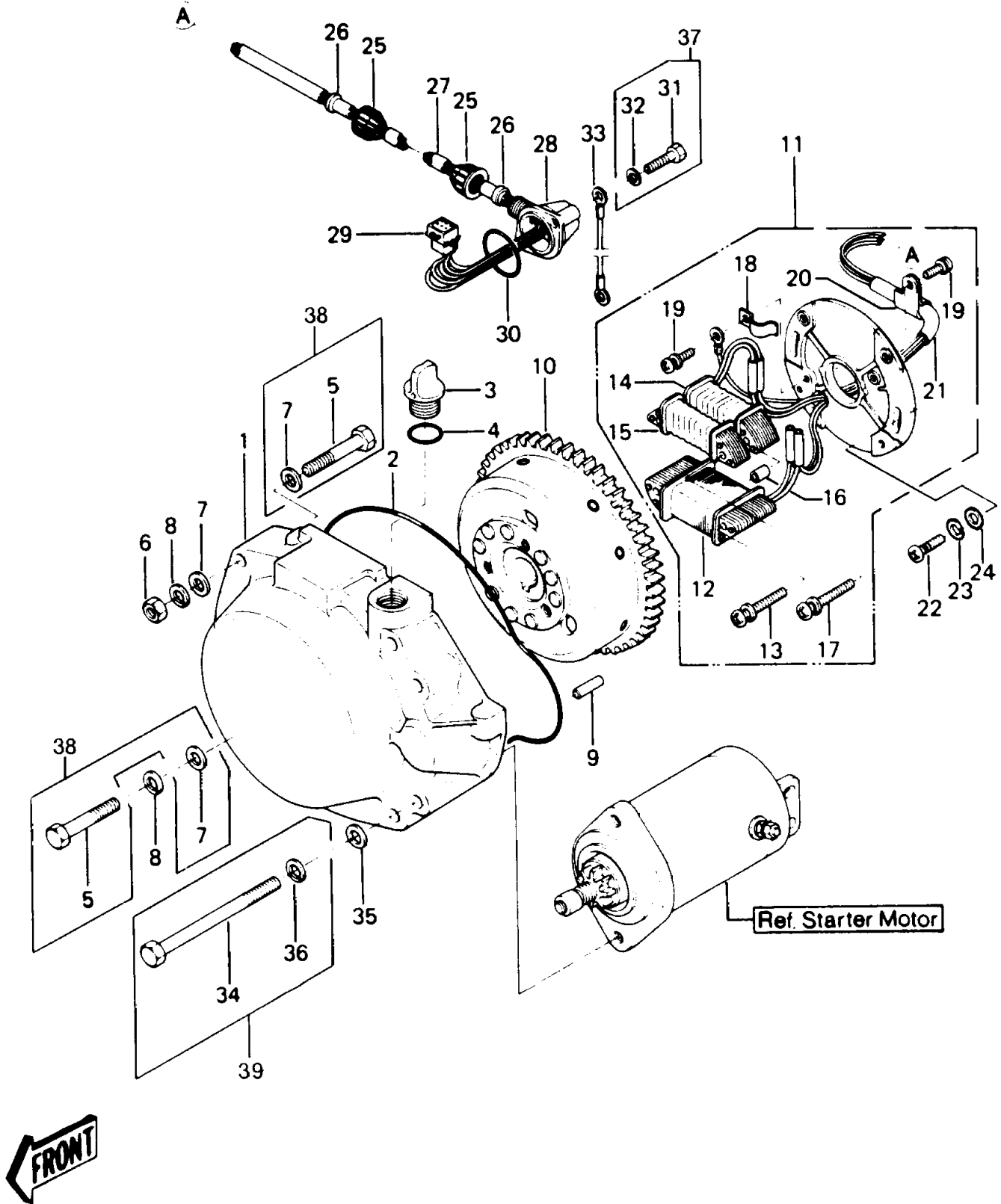


1990 JS440 PARTS DIAGRAM

Generator(JS440-A11)



1990 JS440 PARTS LIST

Generator(JS440-A11)

| ITEM NAME | PART NUMBER | QUANTITY |
|-----------------------------------|--------------|----------|
| FLYWHEEL (Ref # 10) | 21050-3021 | 1 |
| STATOR (Ref # 11) | 21003-3012 | 1 |
| COIL-CHARGING (Ref # 12) | 59031-3002 | 1 |
| SCREW,5X34 (Ref # 13) | 92011-530 | 2 |
| COIL-EXCITING (Ref # 14) | 21049-3007 | 1 |
| COIL-PULSING (Ref # 15) | 59026-3008 | 1 |
| COLLAR (Ref # 16) | 92027-3014 | 2 |
| SCREW,5X38 (Ref # 17) | 92009-3008 | 2 |
| CLAMP (Ref # 18) | 92037-520 | 1 |
| SCREW,4X8 (Ref # 19) | 92011-560 | 2 |
| CLAMP (Ref # 20) | 92037-547 | 1 |
| HARNESS,WIRING (Ref # 21) | 26001-3006 | 1 |
| SCREW-PAN-CROS (Ref # 22) | 220B0520 | 2 |
| WASHER-SPRING,5MM (Ref # 23) | 461F0500 | 2 |
| WASHER (Ref # 24) | 92022-544 | 2 |
| CAP (Ref # 25) | 11012-3012 | 2 |
| GROMMET (Ref # 26) | 92071-3001 | 2 |
| TUBE,10X345 (Ref # 27) | 92059-3032 | 1 |
| CAP. (Ref # 28) | 59176-517-YR | 1 |
| CONNECTOR-CORD (Ref # 29) | 59221-506 | 1 |
| RING-O (Ref # 30) | 92055-520 | 1 |
| WIRE-LEAD,BLACK (Ref # 33) | 26011-3006 | 1 |
| WASHER-PLAIN-SMALL,8MM (Ref # 35) | 410S0800 | 2 |
| BOLT,6X35 (Ref # 37) | 92002-3715 | 2 |
| BOLT-WP-SMALL (Ref # 38) | 154R0845 | 4 |
| BOLT,8X70 (Ref # 39) | 92002-3719 | 2 |
| COVER-GENERATOR (Ref # 1A) | 14031-3705 | 1 |
| RING-O (Ref # 2) | 92055-521 | 1 |
| BREATHER-BRAKE (Ref # 3) | 43056-502 | 1 |

1990 JS440 PARTS LIST

Generator(JS440-A11)

| ITEM NAME | PART NUMBER | QUANTITY |
|----------------------------------|-------------|----------|
| RING-O (Ref # 4) | 92055-515 | 1 |
| NUT-HEX-SMALL (Ref # 6A) | 317R0800 | 2 |
| WASHER-PLAIN-SMALL,8MM (Ref # 7) | 410S0800 | 2 |
| WASHER-SPRING,8MM (Ref # 8) | 461S0800 | 2 |
| PIN-DOWEL (Ref # 9) | 551R0612 | 2 |