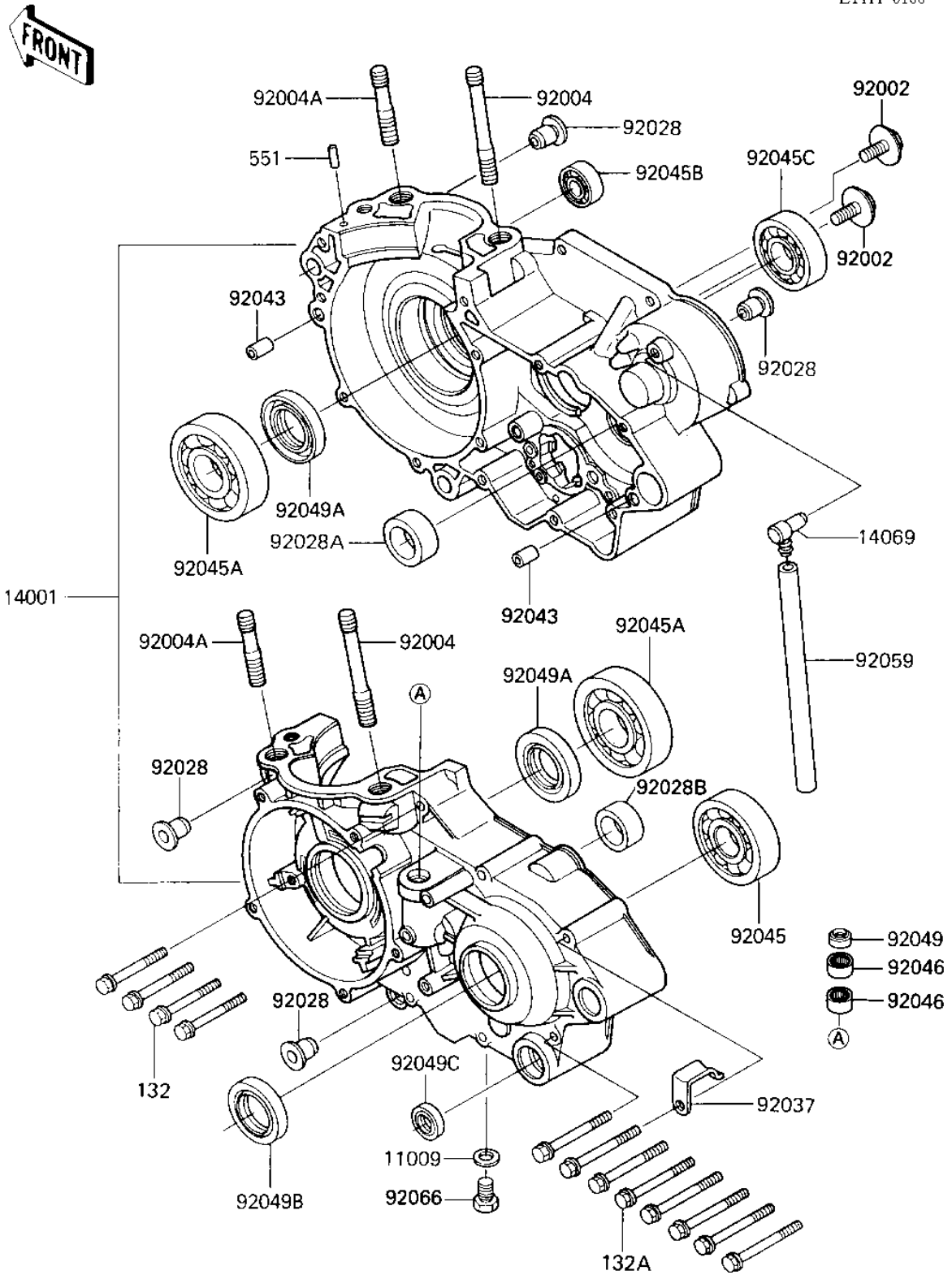


# 1987 KX500 PARTS DIAGRAM

## CRANKCASE

E1411-0166



# 1987 KX500 PARTS LIST

## CRANKCASE

| ITEM NAME                            | PART NUMBER | QUANTITY |
|--------------------------------------|-------------|----------|
| GASKET CHECK VALVE (Ref # 11009)     | 92065-058   | 1        |
| SET-CRANKCASE (Ref # 14001)          | 14001-5295  | 1        |
| BREATHER (Ref # 14069)               | 14069-003   | 1        |
| BOLT (Ref # 92002)                   | 92002-1659  | 2        |
| STUD,10X67 (Ref # 92004)             | 92004-1052  | 2        |
| STUD,10X45 (Ref # 92004A)            | 92004-1160  | 2        |
| BUSHING,CRANKCASE (Ref # 92028)      | 92028-1133  | 4        |
| BUSHING (Ref # 92028A)               | 92028-131   | 1        |
| BUSHING (Ref # 92028B)               | 92028-132   | 1        |
| CLAMP,HARNESS (Ref # 92037)          | 92037-1318  | 1        |
| PIN-DOWEL (Ref # 92043)              | 92042-007   | 2        |
| BEARING,BALL,#6305 (Ref # 92045)     | 92045-1011  | 1        |
| BEARING,B,6306SH2-9TC (Ref # 92045A) | 92045-1027  | 2        |
| BEARING-BALL (Ref # 92045B)          | 92045-1212  | 1        |
| BEARING-BALL,63/22T2C (Ref # 92045C) | 92045-1134  | 1        |
| BEARING,NEEDLE,HK1210 (Ref # 92046)  | 92046-1010  | 2        |
| SEAL-OIL (Ref # 92049)               | 92049-1271  | 1        |
| OIL SEAL,TB30508 (Ref # 92049A)      | 92050-057   | 2        |
| SEAL-OIL,TC32457 (Ref # 92049B)      | 92049-1159  | 1        |
| OIL SEAL,TB13225.5 (Ref # 92049C)    | 92051-005   | 1        |
| PIPE-BREATHER (Ref # 92059)          | 92059-061   | 1        |
| PLUG (Ref # 92066)                   | 92066-1241  | 1        |
| BOLT-FLANGED-SMALL (Ref # 132)       | 132G0650    | 4        |
| BOLT-FLANGED-SMALL (Ref # 132A)      | 132G0660    | 8        |
| PIN-DOWEL (Ref # 551)                | 551A0412    | 1        |