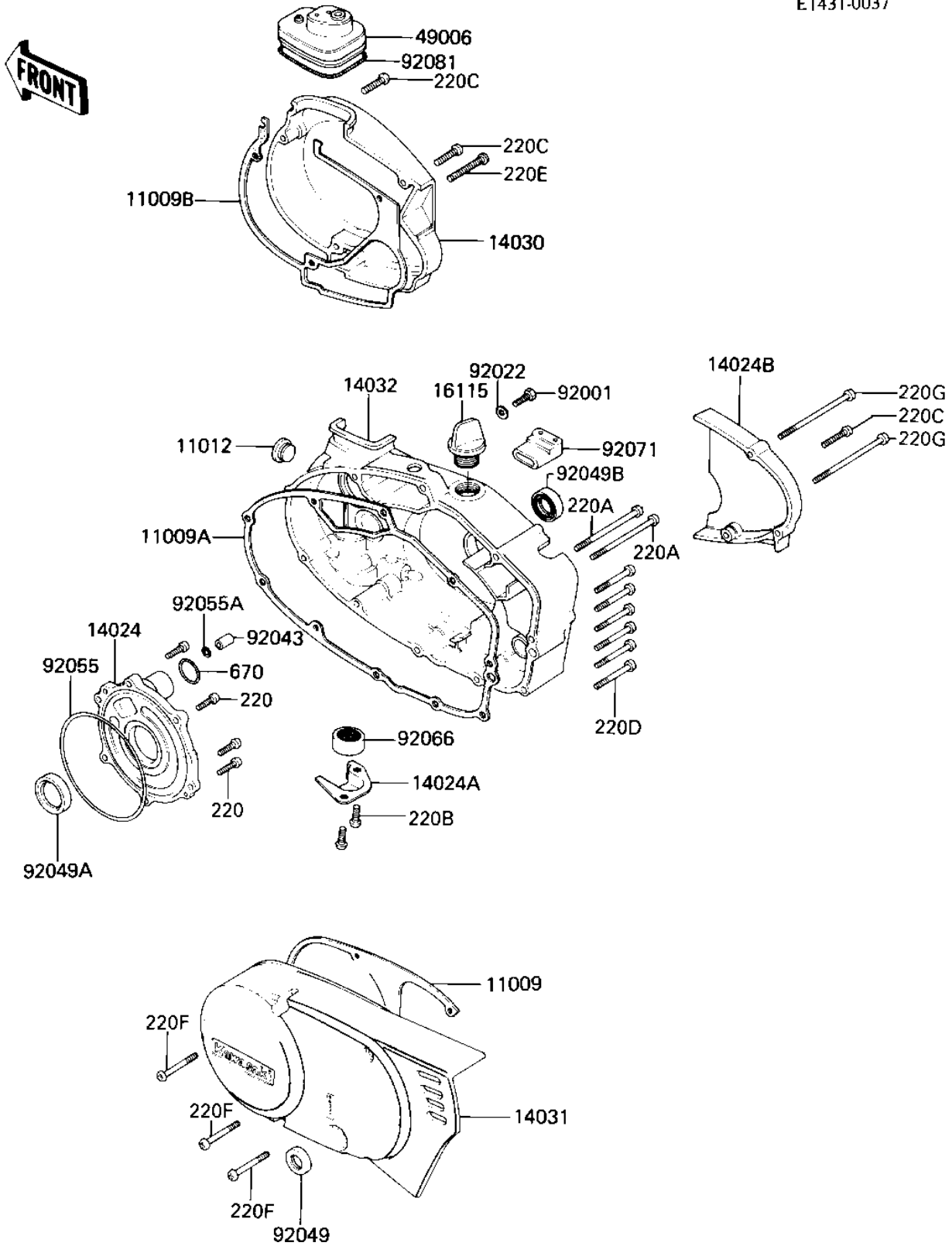


1987 KD80 PARTS DIAGRAM

ENGINE COVERS

E1431-0037



1987 KD80 PARTS LIST

ENGINE COVERS

| ITEM NAME | PART NUMBER | QUANTITY |
|--------------------------------------|-------------|----------|
| GASKET,GENERATOR COVE (Ref # 11009) | 11060-1202 | 1 |
| GASKET,CLUTCH COVER (Ref # 11009A) | 11060-1198 | 1 |
| GASKET,CARBURETOR COV (Ref # 11009B) | 11060-1201 | 1 |
| CAP CARB MOUNT HOLE (Ref # 11012) | 14039-001 | 1 |
| COVER,ROTRY DISC VALV (Ref # 14024) | 14019-056 | 1 |
| COVER,CLUTCH CABLE (Ref # 14024A) | 14025-1137 | 1 |
| COVER,OIL PUMP (Ref # 14024B) | 14025-1185 | 1 |
| COVER,CARBURETOR (Ref # 14030) | 14030-1011 | 1 |
| COVER,L.H.ENGINE (Ref # 14031) | 14031-1043 | 1 |
| COVER-CLUTCH (Ref # 14032) | 14032-1096 | 1 |
| FILLER,OIL (Ref # 16115) | 16115-018 | 1 |
| CAP,CARBURETOR (Ref # 49006) | 14038-035 | 1 |
| BOLT,6X14 (Ref # 92001) | 92001-1935 | 1 |
| WASHER OIL PUMP BANJO (Ref # 92022) | 92022-077 | 1 |
| PIN DOWEL 8X16 (Ref # 92043) | 92042-017 | 1 |
| OIL SEAL SB12205 (Ref # 92049) | 92049-004 | 1 |
| SEAL-OIL (Ref # 92049A) | 92049-1250 | 1 |
| OIL SEAL TB16267 (Ref # 92049B) | 92051-003 | 1 |
| "O" RING,100MM (Ref # 92055) | 92055-010 | 1 |
| "O" RING,8MM (Ref # 92055A) | 92055-029 | 1 |
| DRAIN,FUEL (Ref # 92066) | 16116-006 | 1 |
| GROMMET,OVER FLOW (Ref # 92071) | 16136-007 | 1 |
| SPRING COIL (Ref # 92081) | 92081-047 | 1 |
| SCREW PAN HEAD 6X20 (Ref # 220) | 220B0620 | 1 |
| SCREW PAN HEAD 6X45 (Ref # 220A) | 220B0645 | 1 |
| SCREW-PAN-CROS (Ref # 220B) | 220X0612 | 1 |
| SCREW-PAN-CROS (Ref # 220C) | 220X0620 | 1 |
| SCREW-PAN-CROS (Ref # 220D) | 220X0630 | 1 |
| SCREW-PAN-CROS (Ref # 220E) | 220X0635 | 1 |

1987 KD80 PARTS LIST

ENGINE COVERS

| ITEM NAME | PART NUMBER | QUANTITY |
|-----------------------------|-------------|----------|
| SCREW-PAN-CROS (Ref # 220F) | 220X0645 | 1 |
| SCREW-PAN-CROS (Ref # 220G) | 220X0675 | 1 |
| "O" RING,26MM (Ref # 670) | 670B3026 | 1 |