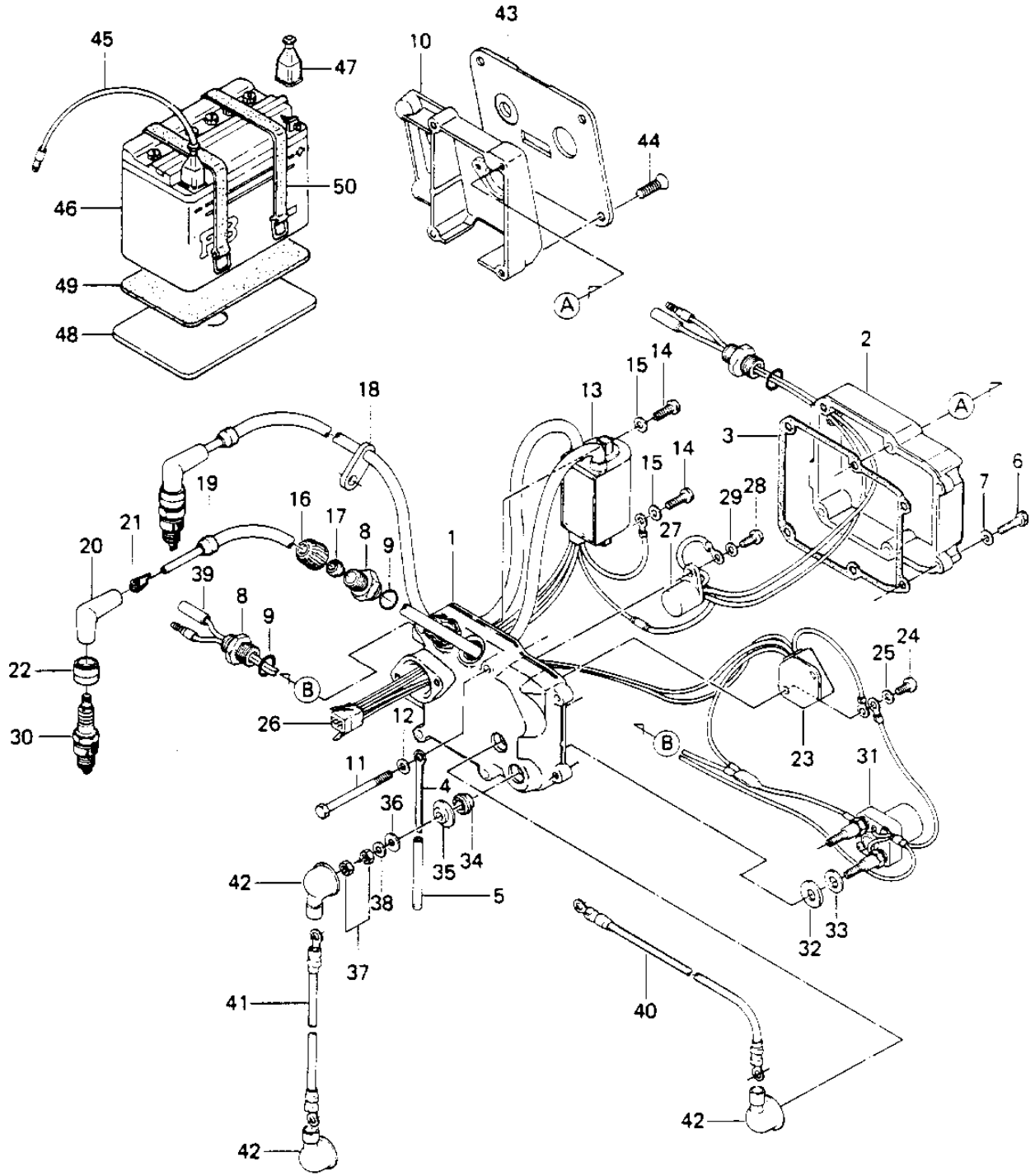


1984 JS440 PARTS DIAGRAM

ELECTRIC CASE ('84-'86 JS440-A8/A9)



1984 JS440 PARTS LIST

ELECTRIC CASE ('84-'86 JS440-A8/A9)

| ITEM NAME | PART NUMBER | QUANTITY |
|----------------------------------|---------------|----------|
| CASE-ELECTRIC,FRONT (Ref # 1) | 59416-3004-YR | 1 |
| CASE-ELECTRIC,REAR (Ref # 2) | 59416-3003-YR | 1 |
| GASKET,ELECTRIC CASE (Ref # 3) | 11009-3781 | 1 |
| CLAMP,L=100 (Ref # 4) | 92037-3736 | 1 |
| TUBE,VINYL,5X73 (Ref # 5) | 92059-3017 | 1 |
| BOLT,HEX HEAD,6X25 (Ref # 6) | 110R0625 | 2 |
| WASHER (Ref # 7) | 411S0600 | 2 |
| JOINT (Ref # 8) | 59071-3001 | 4 |
| "O" RING,16MM (Ref # 9) | 670B2016 | 4 |
| CASE,FUEL TAP (Ref # 10) | 32099-3752 | 1 |
| BOLT,6X80 (Ref # 11) | 110R0680 | 4 |
| WASHER (Ref # 12) | 411S0600 | 4 |
| IGNITER (Ref # 13) | 21119-3016 | 1 |
| SCREW PAN HEAD 6X20 (Ref # 14) | 220B0620 | 2 |
| WASHER PLAIN 6MM (Ref # 15) | 410B0600 | 2 |
| CAP (Ref # 16) | 11012-3005 | 2 |
| GROMMET (Ref # 17) | 92071-527 | 2 |
| GROMMET (Ref # 18) | 92071-529 | 1 |
| GROMMET (Ref # 19) | 92071-517 | 2 |
| CAP SPARK PLUG (Ref # 20) | 21130-009 | 2 |
| SPRING-SPARK PLUG CAP (Ref # 21) | 92101-001 | 2 |
| COVER,PLUG (Ref # 22) | 92071-501 | 2 |
| REGULATOR VOLTAGE (Ref # 23) | 21066-3004 | 1 |
| SCREW PAN HEAD 6X12 (Ref # 24) | 220B0612 | 2 |
| WASHER PLAIN 6MM (Ref # 25) | 410B0600 | 2 |
| CONNECTOR,CORD (Ref # 26) | 59221-505 | 1 |
| RELAY (Ref # 27) | 27034-3002 | 1 |
| SCREW PAN HEAD 6X16 (Ref # 28) | 220B0616 | 1 |
| WASHER PLAIN 6MM (Ref # 29) | 410B0600 | 1 |

1984 JS440 PARTS LIST

ELECTRIC CASE ('84-'86 JS440-A8/A9)

| ITEM NAME | PART NUMBER | QUANTITY |
|----------------------------------|-------------|----------|
| SPARK PLUG B7ES (Ref # 30) | 92070-3003 | 2 |
| SWITCH,SOLENOID (Ref # 31) | 27010-3007 | 1 |
| WASHER,10.5X24X2.5 (Ref # 32) | 92022-3035 | 2 |
| WASHER PLAIN 10MM (Ref # 33) | 410B1000 | 2 |
| GROMMET (Ref # 34) | 92071-3004 | 2 |
| WASHER (Ref # 35) | 92022-3036 | 2 |
| WASHER (Ref # 36) | 92022-553 | 2 |
| NUT,6M/M (Ref # 37) | 311R0600 | 4 |
| WASHER (Ref # 38) | 411S0600 | 2 |
| WIRE-LEAD,L=230 (Ref # 39) | 26011-3003 | 1 |
| WIRE-LEAD,BATTERY(+) (Ref # 40) | 26011-3778 | 1 |
| WIRE-LEAD,L=340 (Ref # 41) | 26011-3005 | 1 |
| CAP (Ref # 42) | 11012-3004 | 3 |
| PANEL-CONTROL (Ref # 43) | 59226-3702 | 1 |
| SCREW,CNTSNK HEAD8X22 (Ref # 44) | 92009-3004 | 4 |
| WIRE-LEAD,BATTERY(-) (Ref # 45) | 26011-3776 | 1 |
| FB BAT 12N16-3B (Ref # 46) | 26012-1013 | 1 |
| CAP-BATTERY TERMINAL (Ref # 47) | 59176-501 | 2 |
| PLATE-BATTERY (Ref # 48) | 13169-3014 | 1 |
| CUSHION,BATTERY (Ref # 49) | 92075-509 | 1 |
| BAND,BATTERY (Ref # 50) | 92072-512 | 2 |