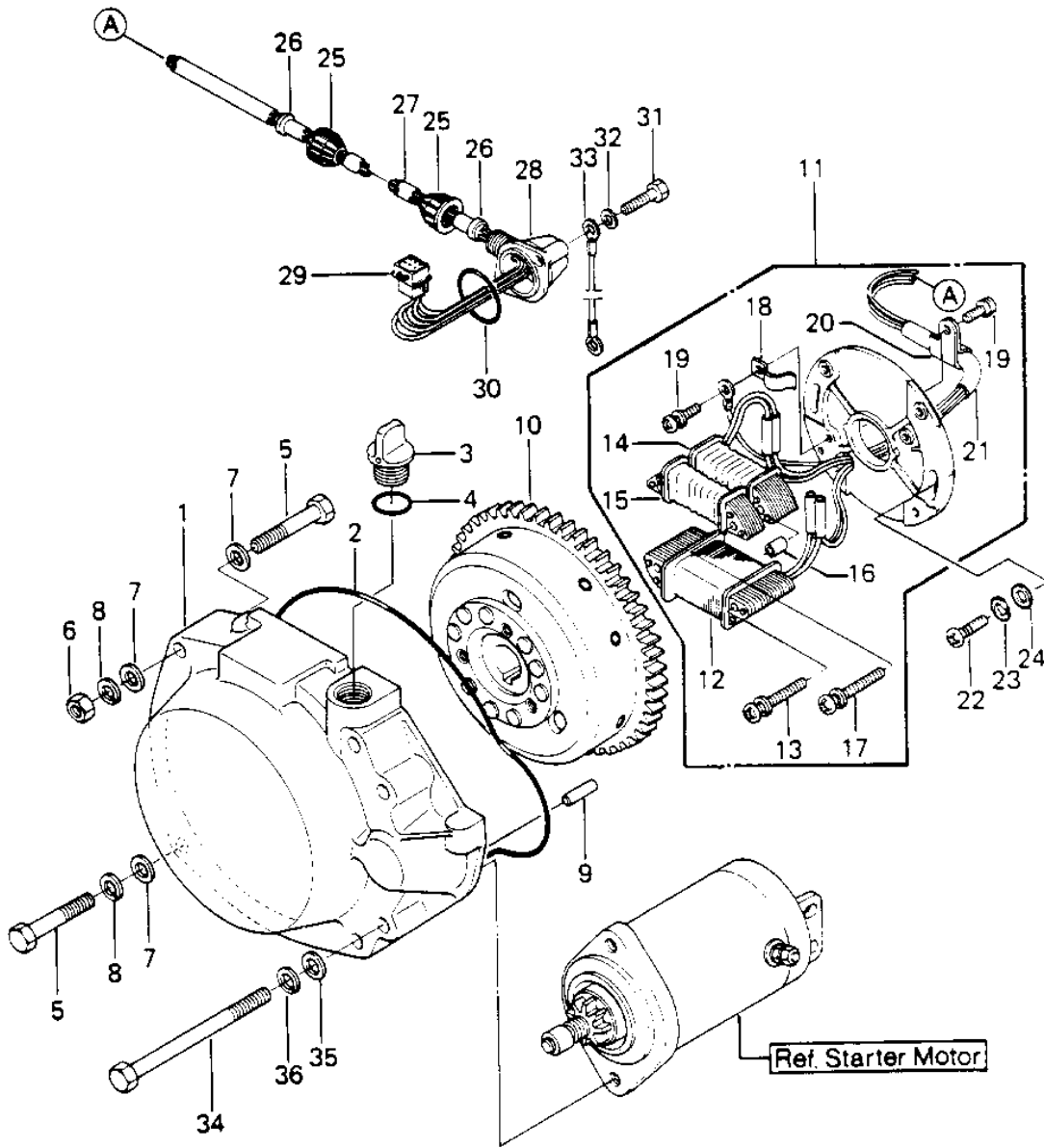


1986 JS440 PARTS DIAGRAM

GENERATOR ('84-'86 JS440-A8/A9/A10)



1986 JS440 PARTS LIST

GENERATOR ('84-'86 JS440-A8/A9/A10)

ITEM NAME	PART NUMBER	QUANTITY
COVER-GENERATOR (Ref # 1)	14031-3705	1
"O" RING (Ref # 2)	92055-521	1
BREATHER (Ref # 3)	14069-3709	1
"O" RING (Ref # 4)	92055-515	1
BOLT 8X50 (Ref # 5)	110R0850	4
NUT 8MM (Ref # 6)	311R0800	2
WASHER (Ref # 7)	410S0800	6
WASHER SPRING 8MM (Ref # 8)	461S0800	4
PIN,DOWEL (Ref # 9)	551R0612	2
FLYWHEEL (Ref # 10)	21050-3021	1
STATOR ASSY (Ref # 11)	21003-3012	1
COIL,CHARGE (Ref # 12)	59031-3002	1
SCREW 5X34 (Ref # 13)	92011-530	2
COIL,EXCITING (Ref # 14)	21049-3007	1
COIL,PULSING (Ref # 15)	59026-3008	1
COLLAR,COIL (Ref # 16)	92027-3014	2
SCREW,5X38 (Ref # 17)	92009-3008	2
CLAMP (Ref # 18)	92037-520	1
SCREW 4X8 (Ref # 19)	92011-560	2
CLAMP (Ref # 20)	92037-547	1
HARNESS,MAGNETO (Ref # 21)	26001-3006	1
SCREW PAN HEAD 5X20 (Ref # 22)	220B0520	2
WASHER SPRING 5MM (Ref # 23)	461F0500	2
WASHER (Ref # 24)	92022-544	2
CAP (Ref # 25)	11012-3012	2
GROMMET (Ref # 26)	92071-3001	2
TUBE,10X345 (Ref # 27)	92059-3032	1
CAP-MAGNETO HARNESS (Ref # 28)	59176-517-YR	1
CONNECTOR,CORD (Ref # 29)	59221-506	1

1986 JS440 PARTS LIST

GENERATOR ('84-'86 JS440-A8/A9/A10)

ITEM NAME	PART NUMBER	QUANTITY
"O" RING (Ref # 30)	92055-520	1
BOLT 6X35 (Ref # 31)	110R0635	2
WASHER (Ref # 32)	410S0600	2
WIRE-LEAD,L=300 (Ref # 33)	26011-3006	1
BOLT,8X80 (Ref # 34)	92001-3011	2
WASHER (Ref # 35)	410S0800	2
WASHER SPRING 8MM (Ref # 36)	461S0800	2