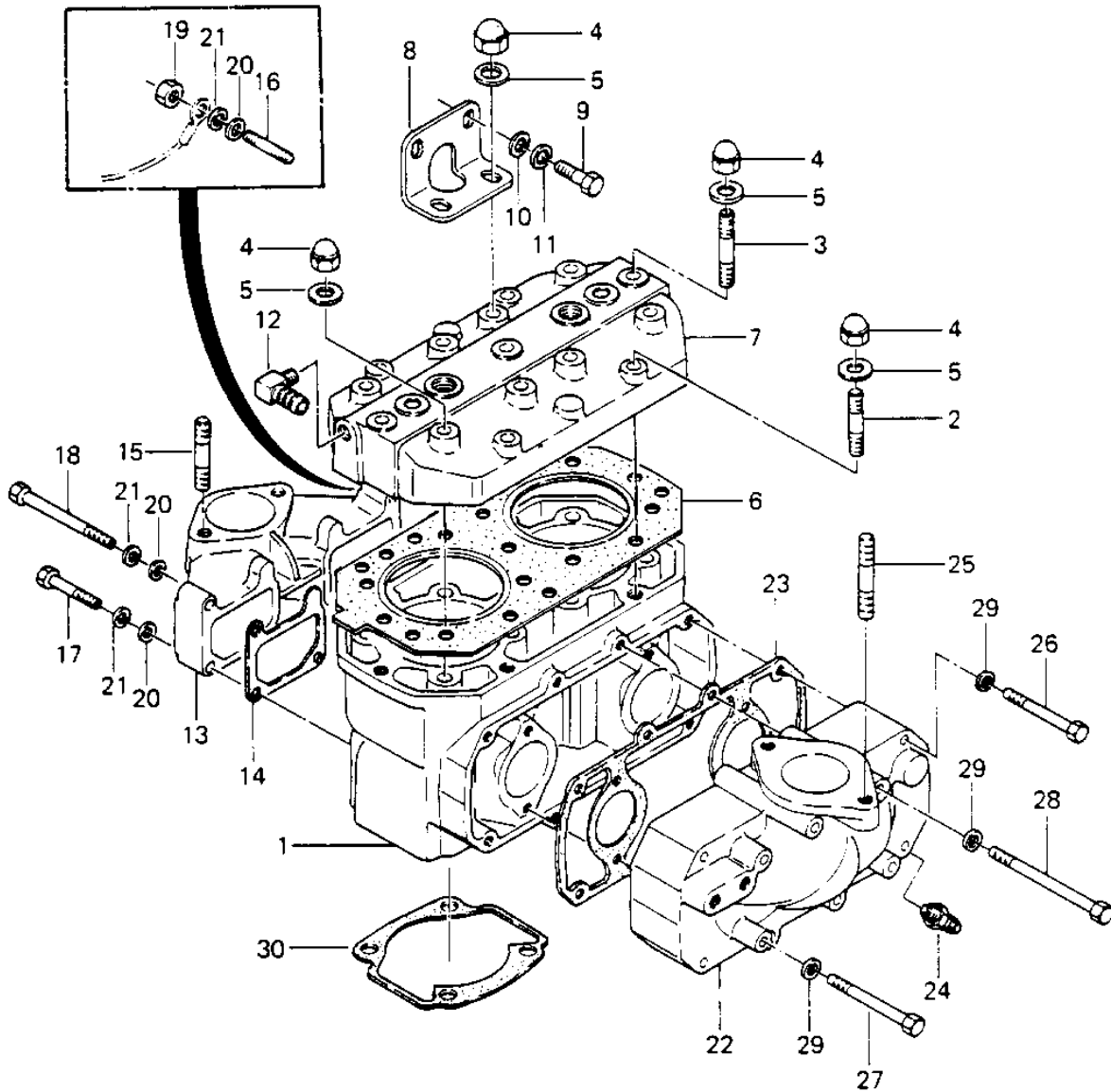


1984 JS440 PARTS DIAGRAM

CYLINDER HEAD/CYLINDER ('84-'86 JS440-A8)



1984 JS440 PARTS LIST

CYLINDER HEAD/CYLINDER ('84-'86 JS440-A8)

| ITEM NAME | PART NUMBER | QUANTITY |
|---------------------------------|---------------|----------|
| CYLINDER-ENGINE (Ref # 1) | 11005-3704 | 1 |
| STUD,8X42 (Ref # 2) | 92004-3016 | 4 |
| STUD,8X50 (Ref # 3) | 92004-3017 | 3 |
| NUT-CAP,8MM (Ref # 4) | 92015-3003 | 15 |
| WASHER (Ref # 5) | 411S0800 | 15 |
| GASKET-HEAD (Ref # 6) | 11004-3707 | 1 |
| HEAD-COMP-CYLINDER (Ref # 7) | 11008-3002-YR | 1 |
| BRACKET,CARBURETOR (Ref # 8) | 11034-3011 | 1 |
| BOLT 6X14 (Ref # 9) | 110R0614 | 2 |
| WASHER (Ref # 10) | 411S0600 | 2 |
| WASHER-SPRING,6MM (Ref # 11) | 461S0600 | 2 |
| ELBOW-WATER HOSE (Ref # 12) | 52014-3002 | 1 |
| MANIFOLD-INTAKE (Ref # 13) | 59076-505-YR | 1 |
| GASKET,INTAKE (Ref # 14) | 11009-3785 | 2 |
| STUD,8X35 (Ref # 15) | 172R0835 | 2 |
| STUD,6X35 (Ref # 16) | 171R0635 | 1 |
| BOLT 6X35 (Ref # 17) | 110R0635 | 3 |
| BOLT,6X70 (Ref # 18) | 110R0670 | 2 |
| NUT,6M/M (Ref # 19) | 311R0600 | 1 |
| WASHER (Ref # 20) | 410S0600 | 6 |
| WASHER-SPRING,6MM (Ref # 21) | 461S0600 | 6 |
| MANIFOLD-EXHAUST (Ref # 22) | 59081-504-YR | 1 |
| GASKET,EXHAUST MANIF (Ref # 23) | 11009-3779 | 1 |
| JOINT,HOSE (Ref # 24) | 92005-3001 | 1 |
| STUD,8X35 (Ref # 25) | 172R0835 | 2 |
| BOLT,6X50 (Ref # 26) | 110R0650 | 6 |
| BOLT,6X70 (Ref # 27) | 110R0670 | 4 |
| BOLT,6X85 (Ref # 28) | 110R0685 | 2 |
| WASHER (Ref # 29) | 410S0600 | 12 |