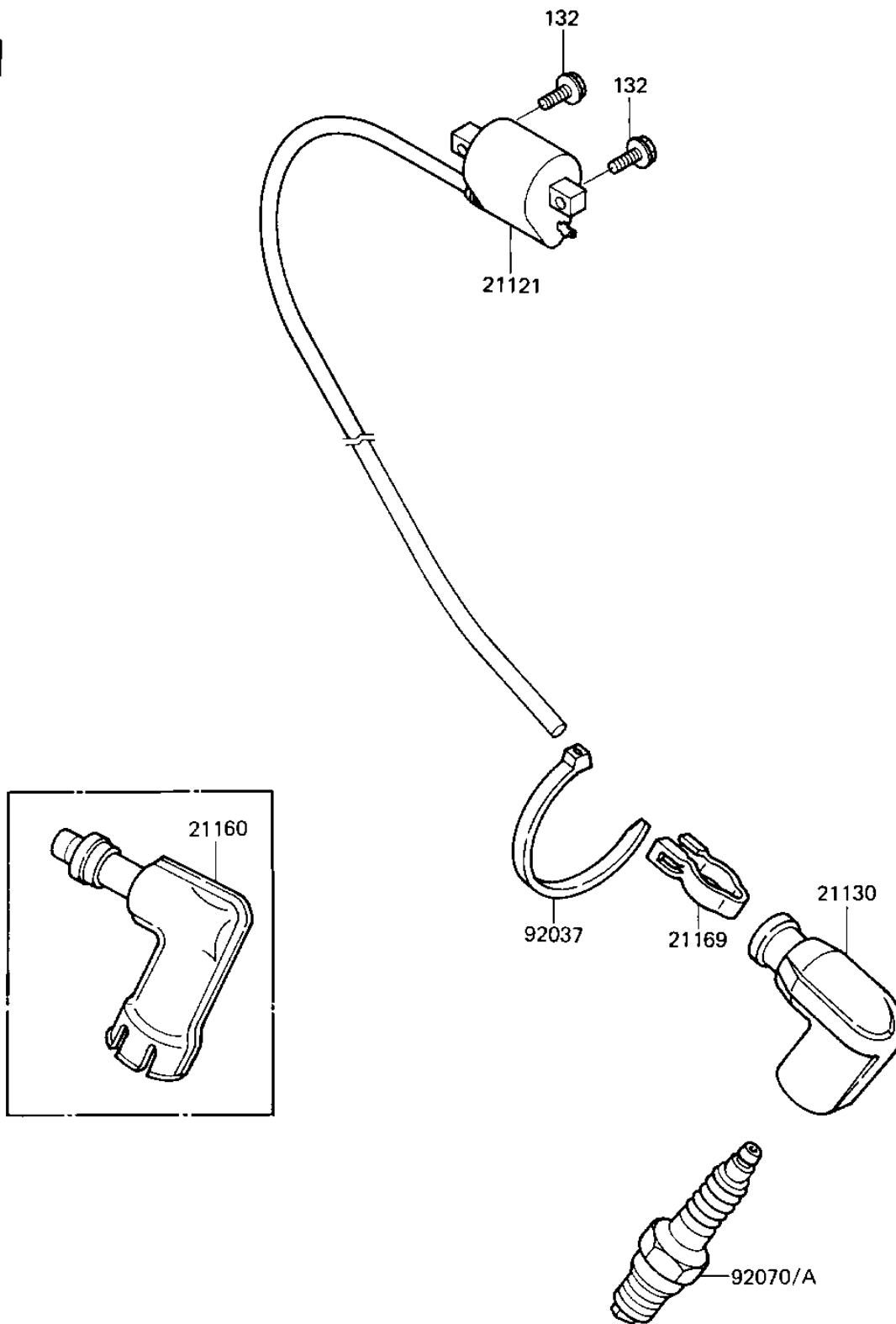


1987 KX80 PARTS DIAGRAM

IGNITION COIL

E1830-0234



1987 KX80 PARTS LIST

IGNITION COIL

| ITEM NAME | PART NUMBER | QUANTITY |
|---------------------------------------|-------------|----------|
| COIL-IGNITION (Ref # 21121) | 21121-1057 | 1 |
| CAP,SPARK PLUG (Ref # 21130) | 21130-1006 | 1 |
| CAP,SPARK PLUG (Ref # 21160) | 21160-005 | 1 |
| TERMINAL,PLUG CAP (Ref # 21169) | 21169-001 | 1 |
| CLAMP,SPARK PLUG CAP (Ref # 92037) | 92037-1173 | 1 |
| SPARK PLUG B9EG (Ref # 92070) | B9EG | 1 |
| *** N.L.A.*** (Canada) (Ref # 92070A) | 92070-1061 | 1 |
| BOLT-FLANGED-SMALL (Ref # 132) | 132G0616 | 1 |