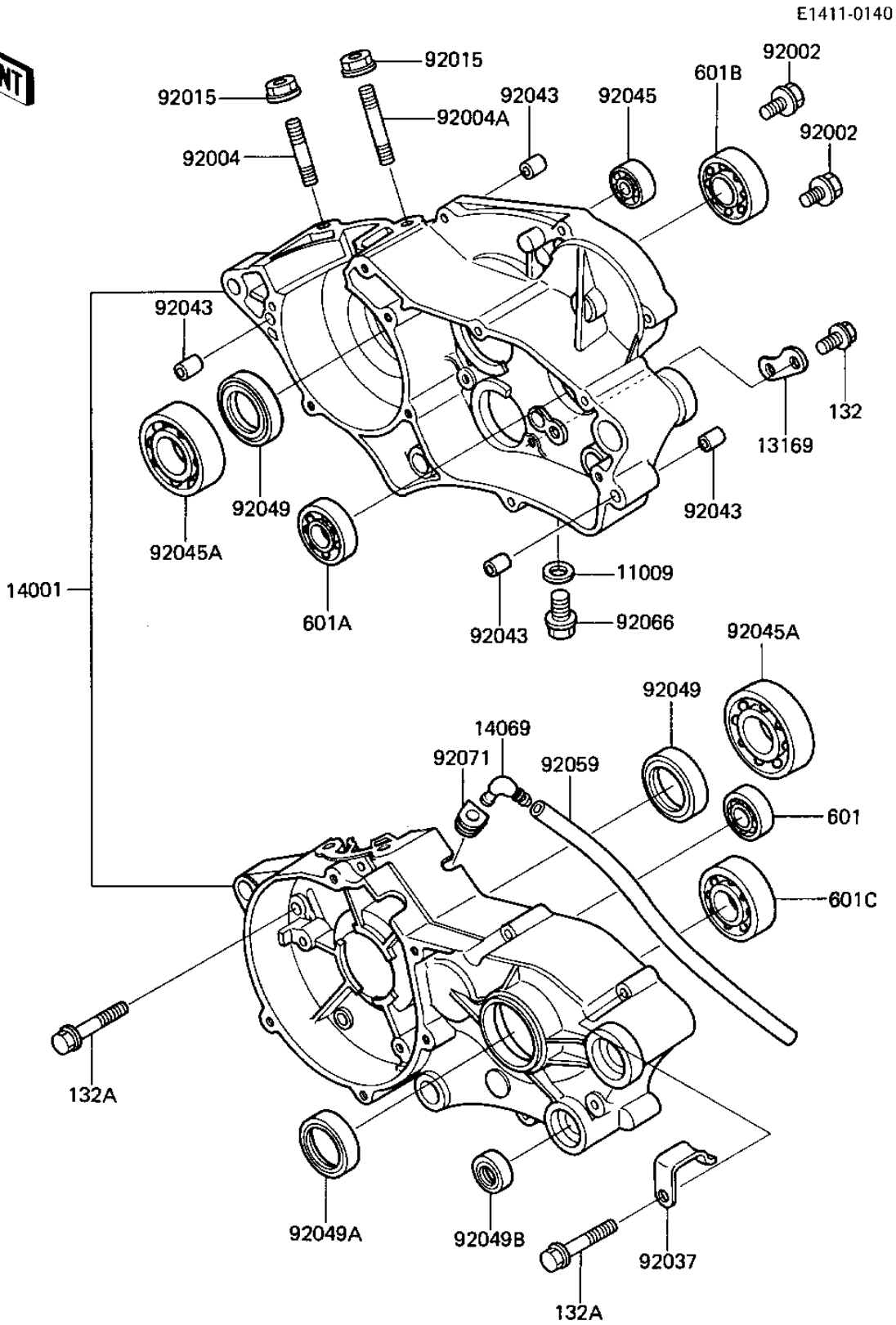


1987 KX80 PARTS DIAGRAM

CRANKCASE



1987 KX80 PARTS LIST

CRANKCASE

ITEM NAME	PART NUMBER	QUANTITY
GASKET CHECK VALVE (Ref # 11009)	92065-058	1
PLATE,CHANGE DRUM (Ref # 13169)	13169-012	1
SET-CRANKCASE (Ref # 14001)	14001-5200	1
BREATHER ASSY (Ref # 14069)	14069-1001	1
BOLT (Ref # 92002)	92002-1659	1
STUD,8X25 (Ref # 92004)	92004-1008	1
STUD,8X35 (Ref # 92004A)	92004-1009	1
NUT-8MM (Ref # 92015)	92015-1143	1
CLAMP,HARNESS (Ref # 92037)	92037-1318	1
PIN-DOWEL (Ref # 92043)	92042-007	1
BEARING-BALL (Ref # 92045)	92045-1211	1
BEARING-BALL,R-6304C3 (Ref # 92045A)	92045-1059	1
SEAL-OIL,SD20407GS (Ref # 92049)	92049-1188	1
OIL SEAL SC25376 (Ref # 92049A)	92050-013	1
OIL SEAL,TB13225.5 (Ref # 92049B)	92051-005	1
TUBE,6X9X750 (Ref # 92059)	92059-1372	1
PLUG (Ref # 92066)	92066-1241	1
GROMMET (Ref # 92071)	92071-042	1
BOLT-FLANGED-SMALL (Ref # 132)	132G0612	1
BOLT-FLANGED-SMALL (Ref # 132A)	132G0635	1
BEARING-BALL (Ref # 601)	601A6001	1
BEARING-BALL (Ref # 601A)	601A6002	1
BEARING BALL #6203 (Ref # 601B)	601A6203	1
BEARING BALL #6204 (Ref # 601C)	601B6204	1