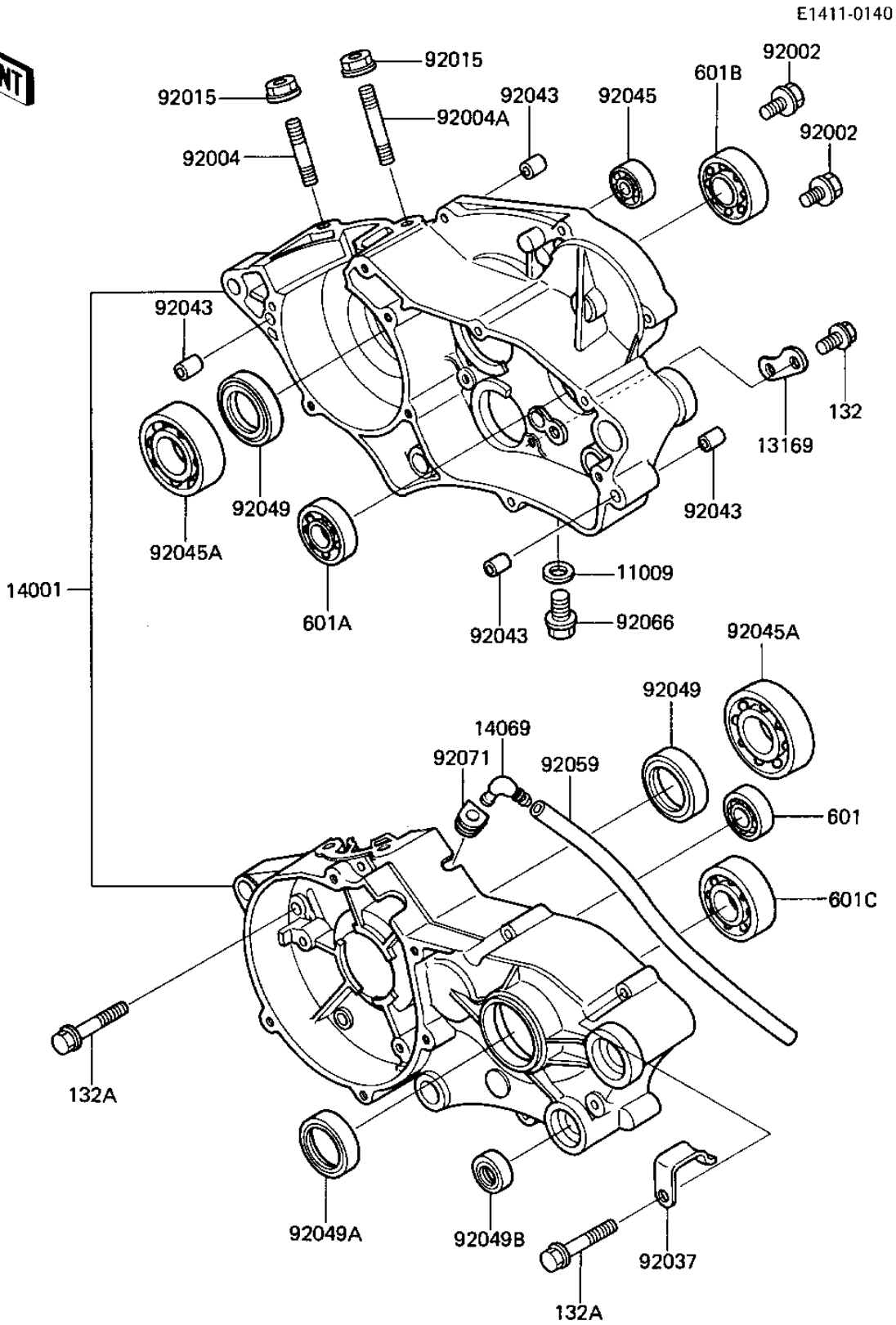


1986 KX80 PARTS DIAGRAM

CRANKCASE



1986 KX80 PARTS LIST

CRANKCASE

| ITEM NAME | PART NUMBER | QUANTITY |
|--------------------------------------|-------------|----------|
| GASKET CHECK VALVE (Ref # 11009) | 92065-058 | 1 |
| PLATE,CHANGE DRUM (Ref # 13169) | 13169-012 | 1 |
| SET-CRANKCASE (Ref # 14001) | 14001-5200 | 1 |
| BREATHER ASSY (Ref # 14069) | 14069-1001 | 1 |
| BOLT (Ref # 92002) | 92002-1659 | 1 |
| STUD,8X25 (Ref # 92004) | 92004-1008 | 1 |
| STUD,8X35 (Ref # 92004A) | 92004-1009 | 1 |
| NUT-8MM (Ref # 92015) | 92015-1143 | 1 |
| CLAMP,HARNESS (Ref # 92037) | 92037-1318 | 1 |
| PIN-DOWEL (Ref # 92043) | 92042-007 | 1 |
| BEARING-BALL (Ref # 92045) | 92045-1211 | 1 |
| BEARING-BALL,R-6304C3 (Ref # 92045A) | 92045-1059 | 1 |
| SEAL-OIL,SD20407GS (Ref # 92049) | 92049-1188 | 1 |
| OIL SEAL SC25376 (Ref # 92049A) | 92050-013 | 1 |
| OIL SEAL,TB13225.5 (Ref # 92049B) | 92051-005 | 1 |
| TUBE,6X9X750 (Ref # 92059) | 92059-1372 | 1 |
| PLUG (Ref # 92066) | 92066-1241 | 1 |
| GROMMET (Ref # 92071) | 92071-042 | 1 |
| BOLT-FLANGED-SMALL (Ref # 132) | 132G0612 | 1 |
| BOLT-FLANGED-SMALL (Ref # 132A) | 132G0635 | 1 |
| BEARING-BALL (Ref # 601) | 601A6001 | 1 |
| BEARING-BALL (Ref # 601A) | 601A6002 | 1 |
| BEARING BALL #6203 (Ref # 601B) | 601A6203 | 1 |
| BEARING BALL #6204 (Ref # 601C) | 601B6204 | 1 |