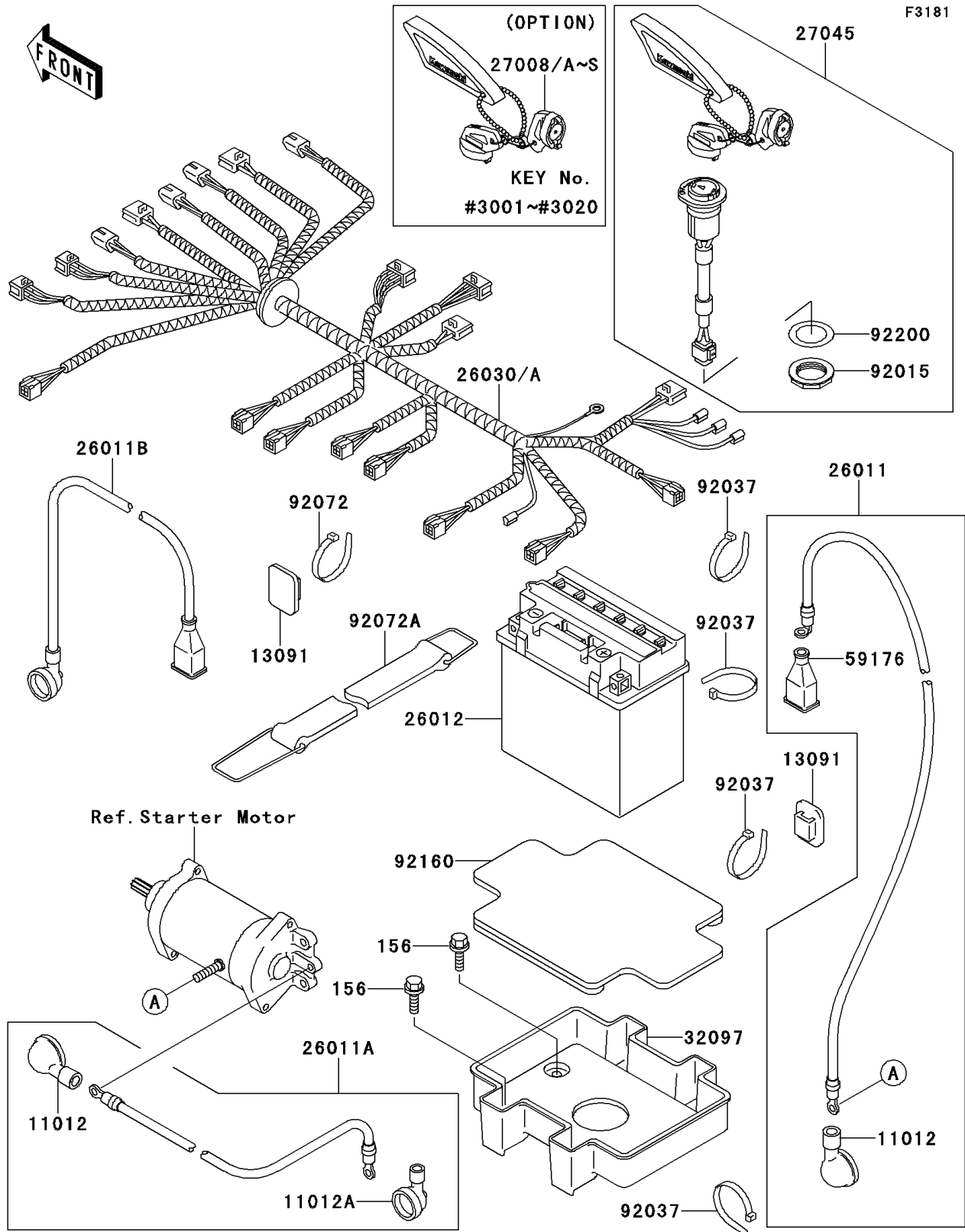


1995 900 ZXi PARTS DIAGRAM

Electrical Equipment



1995 900 ZXi PARTS LIST

Electrical Equipment

ITEM NAME	PART NUMBER	QUANTITY
CAP (Ref # 11012)	11012-3004	1
CAP,LEAD WIRE (Ref # 11012A)	11012-3726	1
HOLDER,BAND (Ref # 13091)	13091-3764	1
WIRE-LEAD,STARTER-BATTERY (Ref # 26011)	26011-3796	1
WIRE-LEAD,RELAY-STARTER (Ref # 26011A)	26011-3797	1
WIRE-LEAD,BATTERY(+) (Ref # 26011B)	26011-3825	1
BATTERY,YTX20L-BS,12V 18AH (Ref # 26012)	26012-3721	1
HARNESS,MAIN (Ref # 26030)	26030-3702	1
KEY-LOCK,MAGNETIC SW,#3001 (Ref # 27008)	27008-3724	1
KEY-LOCK,MAGNETIC SW,#3002 (Ref # 27008A)	27008-3725	1
KEY-LOCK,MAGNETIC SW,#3003 (Ref # 27008B)	27008-3726	1
KEY-LOCK,MAGNETIC SW,#3004 (Ref # 27008C)	27008-3727	1
KEY-LOCK,MAGNETIC SW,#3005 (Ref # 27008D)	27008-3728	1
KEY-LOCK,MAGNETIC SW,#3006 (Ref # 27008E)	27008-3729	1
KEY-LOCK,MAGNETIC SW,#3007 (Ref # 27008F)	27008-3730	1
KEY-LOCK,MAGNETIC SW,#3008 (Ref # 27008G)	27008-3731	1
KEY-LOCK,MAGNETIC SW,#3009 (Ref # 27008H)	27008-3732	1
KEY-LOCK,MAGNETIC SW,#3010 (Ref # 27008I)	27008-3733	1
KEY-LOCK,MAGNETIC SW,#3011 (Ref # 27008J)	27008-3734	1
KEY-LOCK,MAGNETIC SW,#3012 (Ref # 27008K)	27008-3735	1
KEY-LOCK,MAGNETIC SW,#3013 (Ref # 27008L)	27008-3736	1
KEY-LOCK,MAGNETIC SW,#3014 (Ref # 27008M)	27008-3737	1
KEY-LOCK,MAGNETIC SW,#3015 (Ref # 27008N)	27008-3738	1
KEY-LOCK,MAGNETIC SW,#3016 (Ref # 27008O)	27008-3739	1
KEY-LOCK,MAGNETIC SW,#3017 (Ref # 27008P)	27008-3740	1
BOLT-WP,6X16 (Ref # 156)	156R0616	1
KEY-LOCK,MAGNETIC SW,#3018 (Ref # 27008Q)	27008-3741	1
KEY-LOCK,MAGNETIC SW,#3019 (Ref # 27008R)	27008-3742	1
KEY-LOCK,MAGNETIC SW,#3020 (Ref # 27008S)	27008-3743	1

1995 900 ZXi PARTS LIST

Electrical Equipment

ITEM NAME	PART NUMBER	QUANTITY
SWITCH-ASSY,MAIN (Ref # 27045)	27045-3701	1
CASE-BATTERY (Ref # 32097)	32097-3703	1
CAP.,TERMINAL (Ref # 59176)	59176-501	1
NUT (Ref # 92015)	92015-3848	1
CLAMP (Ref # 92037)	92037-1173	1
BAND (Ref # 92072)	92072-3778	1
BAND,BATTERY (Ref # 92072A)	92072-3787	1
DAMPER,BATTERY (Ref # 92160)	92160-3860	1
WASHER (Ref # 92200)	92200-3736	1