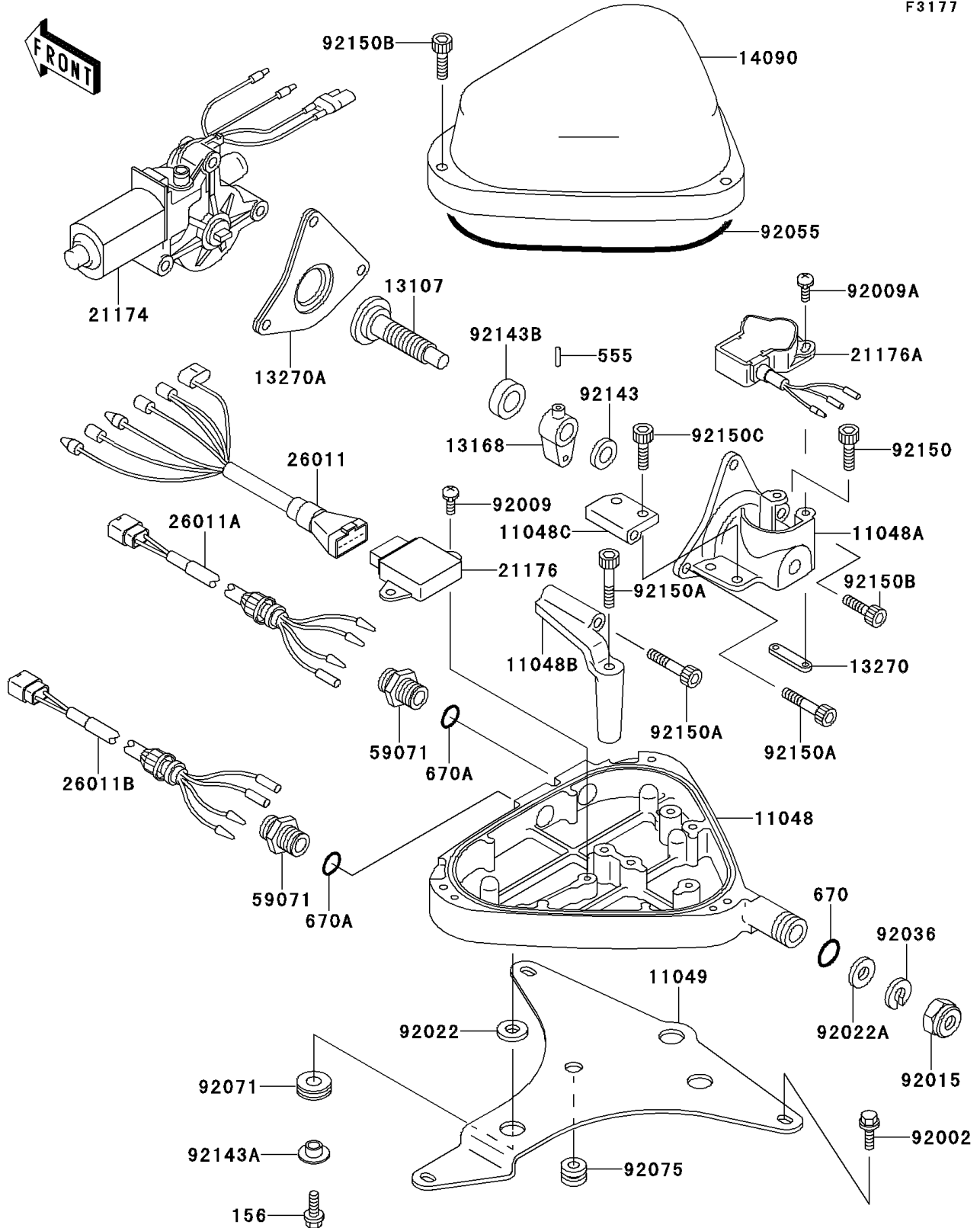


1995 900 ZXi PARTS DIAGRAM

Control(JH900-A1)

F3177



1995 900 ZXi PARTS LIST

Control(JH900-A1)

ITEM NAME	PART NUMBER	QUANTITY
BOLT-WP,6X22 (Ref # 156)	156R0622	1
PIN-SPRING,3X14 (Ref # 555)	555B0314	1
O RING,11MM (Ref # 670)	670B2011	1
O RING,16MM (Ref # 670A)	670B2016	1
BRACKET,MOTOR BOX,LWR (Ref # 11048)	11048-3737	1
BRACKET,MOTOR MOUNT (Ref # 11048A)	11048-3738	1
BRACKET (Ref # 11048B)	11048-3753	1
BRACKET (Ref # 11048C)	11048-3754	1
BRACKET,TILT BOX (Ref # 11049)	11049-3712	1
SHAFT (Ref # 13107)	13107-3735	1
LEVER,SLIDE (Ref # 13168)	13168-3724	1
PLATE,TRIM SENSOR (Ref # 13270)	13270-3744	1
PLATE,MOTOR MOUNT (Ref # 13270A)	13270-3750	1
COVER,MOTOR BOX,UPP (Ref # 14090)	14090-3739	1
MOTOR-ELECTRIC (Ref # 21174)	21174-3702	1
SENSOR,MOTOR CONTROL (Ref # 21176)	21176-3701	1
SENSOR,TRIM METER (Ref # 21176A)	21176-3705	1
WIRE-LEAD,MOTOR CONTROL (Ref # 26011)	26011-3809	1
WIRE-LEAD,TRIM SWITCH (Ref # 26011A)	26011-3823	1
WIRE-LEAD,TRIM METER (Ref # 26011B)	26011-3824	1
JOINT (Ref # 59071)	59071-3001	1
BOLT,6X16 (Ref # 92002)	92002-3728	1
SCREW,5X12 (Ref # 92009)	92009-3740	1
SCREW,4X12 (Ref # 92009A)	92009-3807	1
NUT,20MM (Ref # 92015)	92015-526	1
WASHER,6.2X20X2 (Ref # 92022)	92022-3714	1
WASHER (Ref # 92022A)	92022-535	1
RING-SNAP (Ref # 92036)	92036-501	1
RING-0,ID=171 (Ref # 92055)	92055-3737	1

1995 900 ZXi PARTS LIST

Control(JH900-A1)

ITEM NAME	PART NUMBER	QUANTITY
GROMMET (Ref # 92071)	92071-3737	1
DAMPER,METER BRACKET (Ref # 92075)	92075-1435	1
COLLAR (Ref # 92143)	92143-3744	1
COLLAR (Ref # 92143A)	92143-3749	1
COLLAR,14.3X24.5X8 (Ref # 92143B)	92143-3751	1
BOLT,SOCKET,6X18 (Ref # 92150)	92150-3775	1
BOLT,SOCKET,6X65 (Ref # 92150A)	92150-3821	1
BOLT,SOCKET,6X30 (Ref # 92150B)	92150-3822	1
BOLT,SOCKET,6X25 (Ref # 92150C)	92150-3823	1