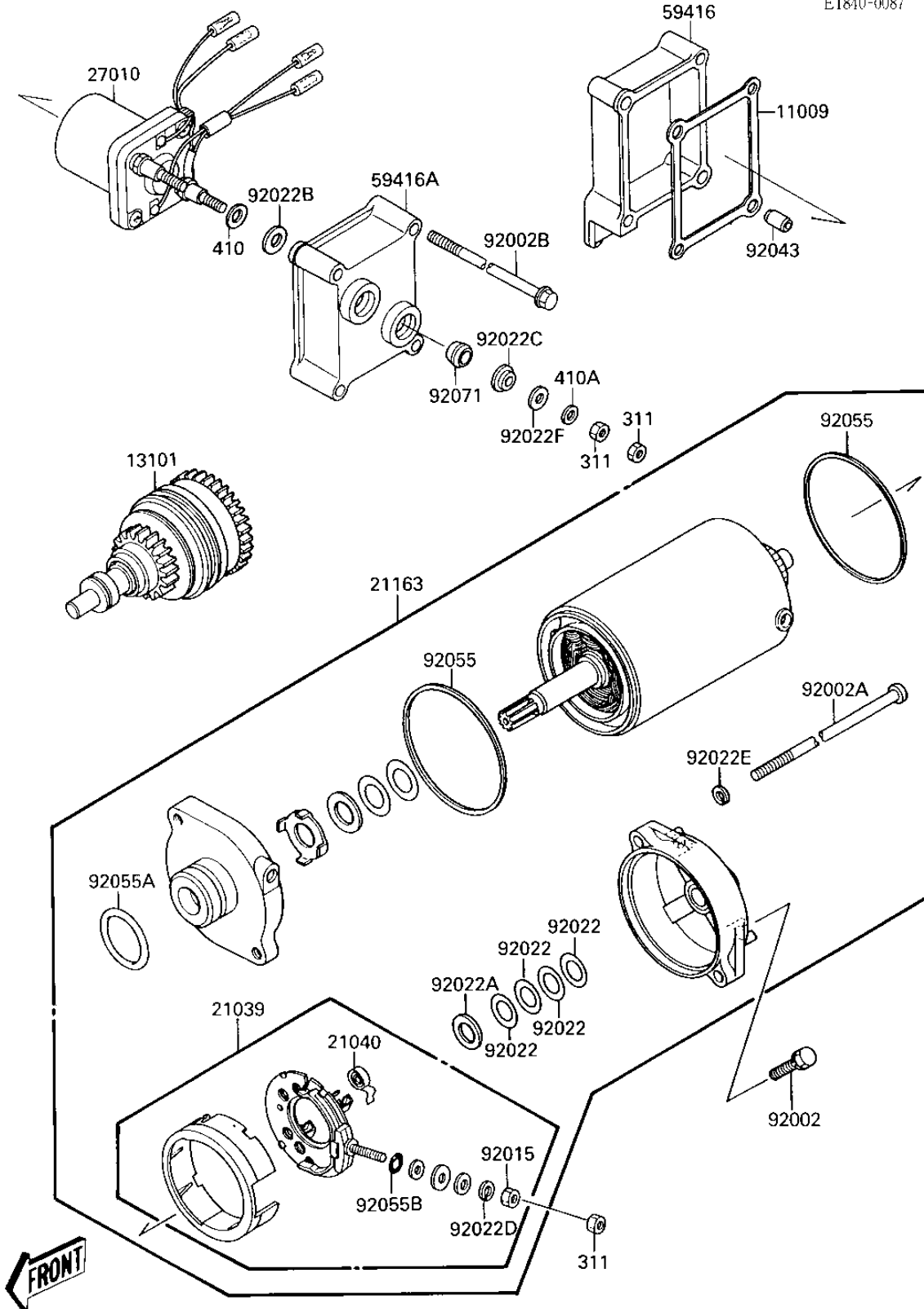


1987 X2 PARTS DIAGRAM

STARTER MOTOR (JF650-A2)

E1840-0087



1987 X2 PARTS LIST

STARTER MOTOR (JF650-A2)

| ITEM NAME | PART NUMBER | QUANTITY |
|-------------------------------------|-------------|----------|
| BOLT,6X25 (Ref # 92002) | 92002-3714 | 2 |
| BOLT (Ref # 92002A) | 92002-3744 | 2 |
| BOLT (Ref # 92002B) | 92002-3773 | 4 |
| NUT,6MM (Ref # 92015) | 92015-3710 | 1 |
| WASHER,THRUST,0.2T (Ref # 92022) | 21025-011 | 1 |
| WASHER,THRUST,0.8T (Ref # 92022A) | 92022-1132 | 4 |
| WASHER,10.5X24X2.5 (Ref # 92022B) | 92022-3035 | 2 |
| WASHER (Ref # 92022C) | 92022-3036 | 2 |
| WASHER,6MM (Ref # 92022D) | 92022-3711 | 1 |
| WASHER,SPRING,5MM (Ref # 92022E) | 92022-3712 | 2 |
| WASHER (Ref # 92022F) | 92022-553 | 2 |
| PIN (Ref # 92043) | 92043-3715 | 2 |
| "O" RING,STARTER MOTR (Ref # 92055) | 92055-1086 | 2 |
| RING-O (Ref # 92055A) | 92055-1276 | 1 |
| RING-O,4.5X2.0 (Ref # 92055B) | 92055-1370 | 1 |
| NUT,6M/M (Ref # 311) | 311R0600 | 5 |
| WASHER PLAIN 10MM (Ref # 410) | 410B1000 | 2 |
| WASHER (Ref # 410A) | 410S0600 | 2 |