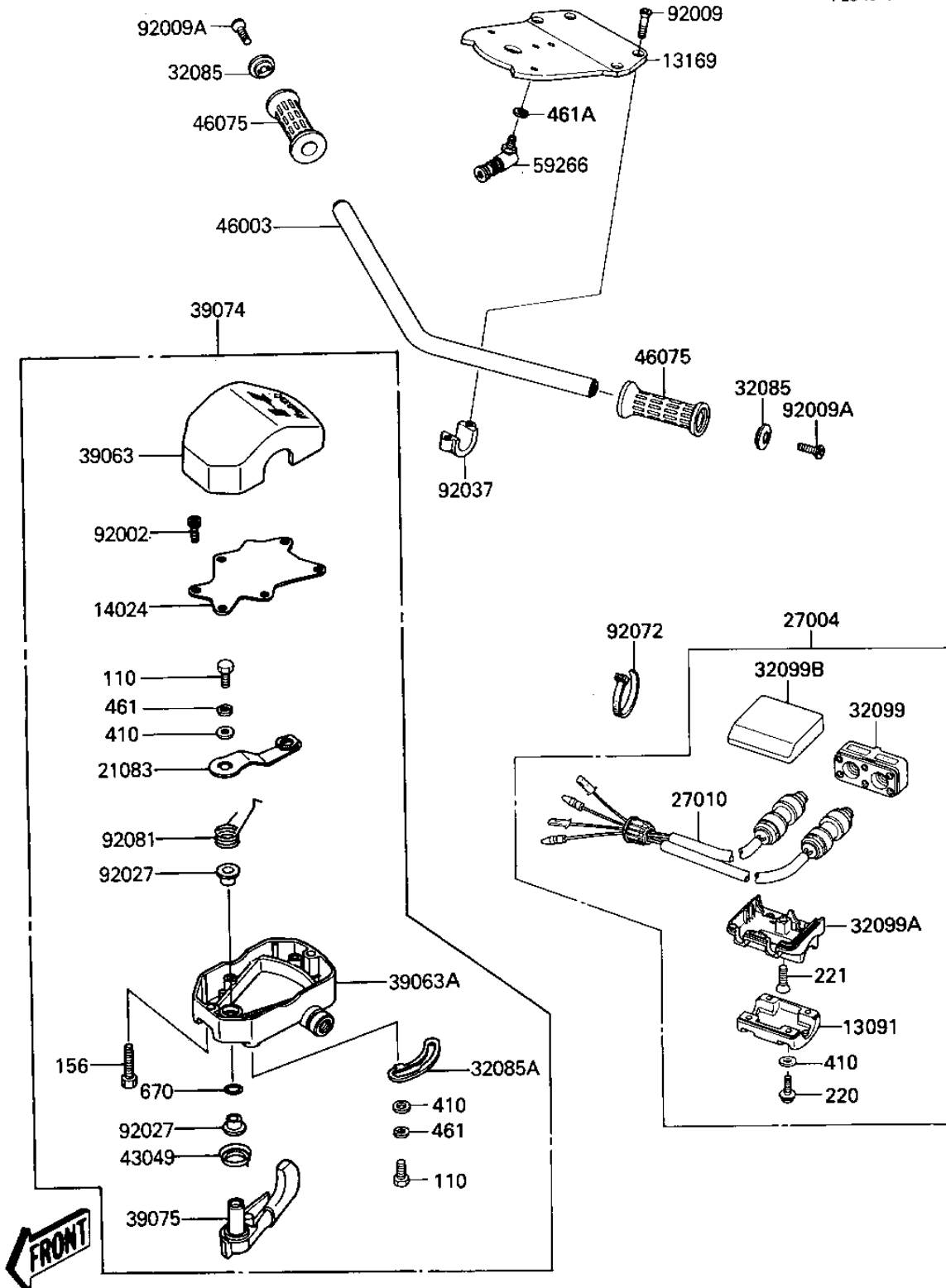


1986 JS300 PARTS DIAGRAM

HANDLEBAR

F2310-0380



1986 JS300 PARTS LIST

HANDLEBAR

ITEM NAME	PART NUMBER	QUANTITY
HOLDER (Ref # 13091)	13091-3726	1
PLATE,HANDLEBAR (Ref # 13169)	13169-3004	1
COVER,THROTTLE LEVER (Ref # 14024)	14024-3701	1
ARM,THROTTLE LEVER (Ref # 21083)	21083-3701	1
SWITCH-ASSY (Ref # 27004)	27004-3704	1
SWITCH,STOP&START (Ref # 27010)	27010-3707	1
STOPPER (Ref # 32085)	32085-3705	1
STOPPER (Ref # 32085A)	32085-3709	1
CASE,FR (Ref # 32099)	32099-3724	1
CASE,LWR (Ref # 32099A)	32099-3725	1
CASE,UPP (Ref # 32099B)	32099-3726	1
HOUSING-CONTROL,UPP (Ref # 39063)	39063-3703	1
HOUSING-CONTROL,LWR (Ref # 39063A)	39063-3705	1
LEVER-ASSY-THROTTLE (Ref # 39074)	39074-3711	1
LEVER-THROTTLE (Ref # 39075)	39075-3704	1
PACKING,THROTTLE LEVE (Ref # 43049)	43049-3701	1
HANDLE (Ref # 46003)	46003-3703	1
GRIP,HANDLEBAR (Ref # 46075)	46075-3713	1
JOINT-BALL (Ref # 59266)	59266-3707	1
BOLT,SOCKET,3X10 (Ref # 92002)	92002-3751	1
SCREW,8X22 (Ref # 92009)	92009-3701	1
SCREW (Ref # 92009A)	92009-3703	1
COLLAR,THROTTLE LEVER (Ref # 92027)	92027-3704	1
CLAMP,HANDLE PIPE (Ref # 92037)	92037-503	1
BAND,MIDDLE (Ref # 92072)	92072-031	1
SPRING,THROTTLE LEVER (Ref # 92081)	92081-3702	1
BOLT,5X10 (Ref # 110)	110R0510	1
BOLT-WP,5X25 (Ref # 156)	156R0525	1
SCREW-PAN-CROS,5X20 (Ref # 220)	220R0520	1

1986 JS300 PARTS LIST

HANDLEBAR

ITEM NAME	PART NUMBER	QUANTITY
SCREW,6X25 (Ref # 221)	221R0625	1
WASHER,PLAIN,5MM (Ref # 410)	410S0500	1
WASHER-SPRING,5MM (Ref # 461)	461S0500	1
WASHER-SPRING,6MM (Ref # 461A)	461S0600	1
"O" RING,8MM (Ref # 670)	670B1508	1