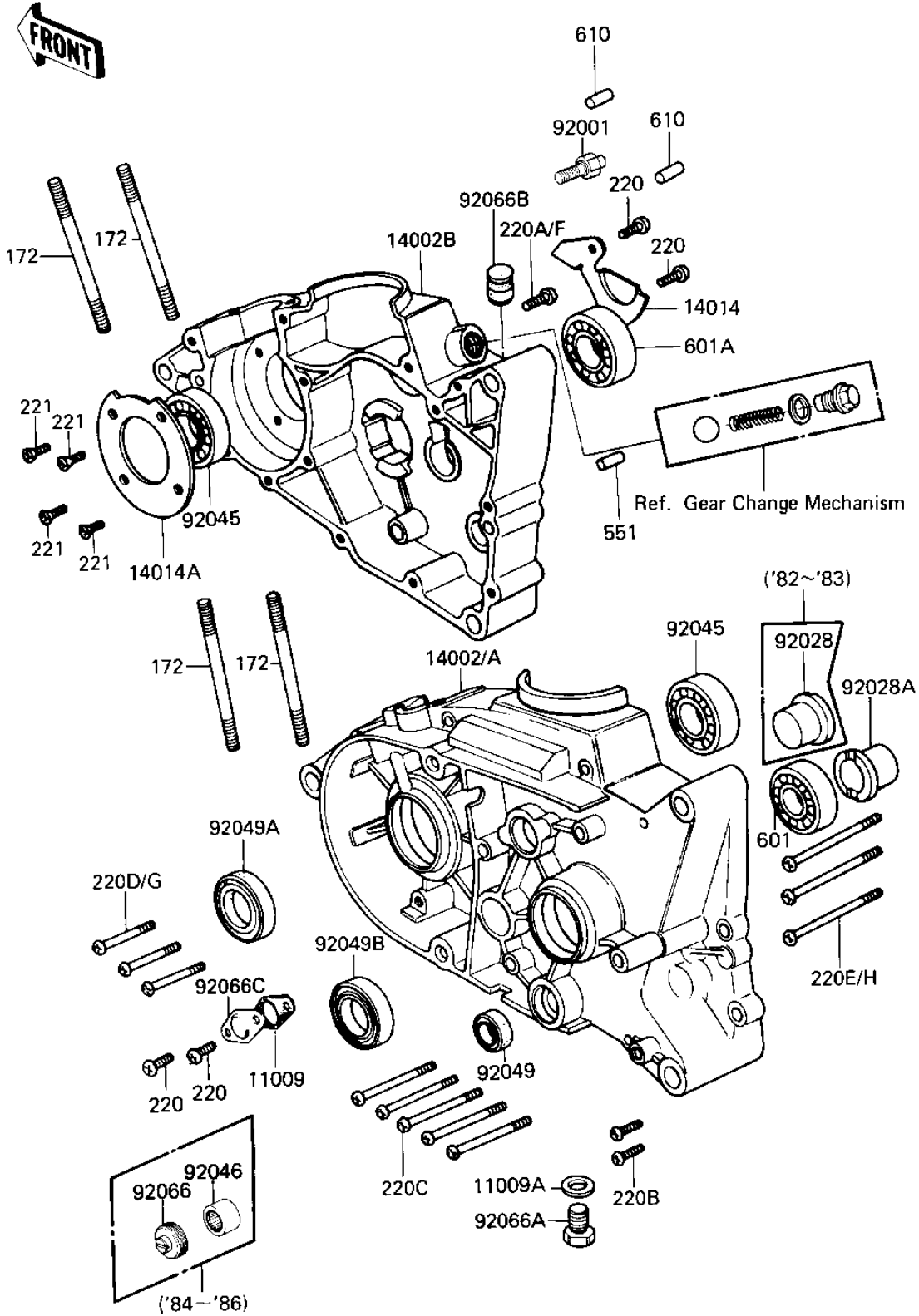


1984 KD80 PARTS DIAGRAM

CRANKCASE

E1411-0108



1984 KD80 PARTS LIST

CRANKCASE

| ITEM NAME | PART NUMBER | QUANTITY |
|--------------------------------------|-------------|----------|
| GASKET NEUTRAL SWITCH (Ref # 11009) | 13146-002 | 1 |
| GASKET CHECK VALVE (Ref # 11009A) | 92065-058 | 1 |
| CRANKCASE,LH (Ref # 14002A) | 14002-1181 | 1 |
| CRANKCASE,RH (Ref # 14002B) | 14002-1205 | 1 |
| HOLDER BEARING MSSON (Ref # 14014) | 14014-008 | 1 |
| HOLDER CRANKSHAFT BRG (Ref # 14014A) | 14014-017 | 1 |
| BOLT,CRANK BRG HOLDER (Ref # 92001) | 92001-1426 | 1 |
| BUSH DRIVE SHAFT (Ref # 92028A) | 92028-069 | 1 |
| BEARING-BALL,#6204 (Ref # 92045) | 92045-1032 | 1 |
| BRG,N,7E-HK1412 (Ref # 92046) | 92046-037 | 1 |
| OIL SEAL SB12205 (Ref # 92049) | 92049-004 | 1 |
| SEAL-OIL (Ref # 92049A) | 92049-1240 | 1 |
| OIL SEAL SC25376 (Ref # 92049B) | 92050-013 | 1 |
| PLUG (Ref # 92066) | 92066-1071 | 1 |
| PLUG OIL DRAIN (Ref # 92066A) | 92067-001 | 1 |
| RUBBER PLUG (Ref # 92066B) | 92074-035 | 1 |
| PLUG-OIL PUMP-HOLE (Ref # 92066C) | 92084-004 | 1 |
| STUD 8X115 (Ref # 172) | 172G08115 | 1 |
| SCREW PAN HEAD 6X12 (Ref # 220) | 220B0612 | 1 |
| SCREW PAN HEAD 6X25 (Ref # 220B) | 220B0625 | 1 |
| SCREW PAN HEAD 6X40 (Ref # 220C) | 220B0640 | 1 |
| SCREW-PAN-CROS (Ref # 220F) | 220X0620 | 1 |
| SCREW-PAN-CROS (Ref # 220G) | 220X0660 | 1 |
| SCREW-PAN-CROS (Ref # 220H) | 220X0665 | 1 |
| SCREW CNTSNK HD 6X16 (Ref # 221) | 221B0616 | 1 |
| PIN DOWEL 8X16 (Ref # 551) | 551A0816 | 1 |
| BEARING BALL #6004 (Ref # 601) | 601B6004 | 1 |
| BEARING BALL #6005 (Ref # 601A) | 601B6005 | 1 |
| PIN DOWEL 5X12 (Ref # 610) | 610A0512 | 1 |