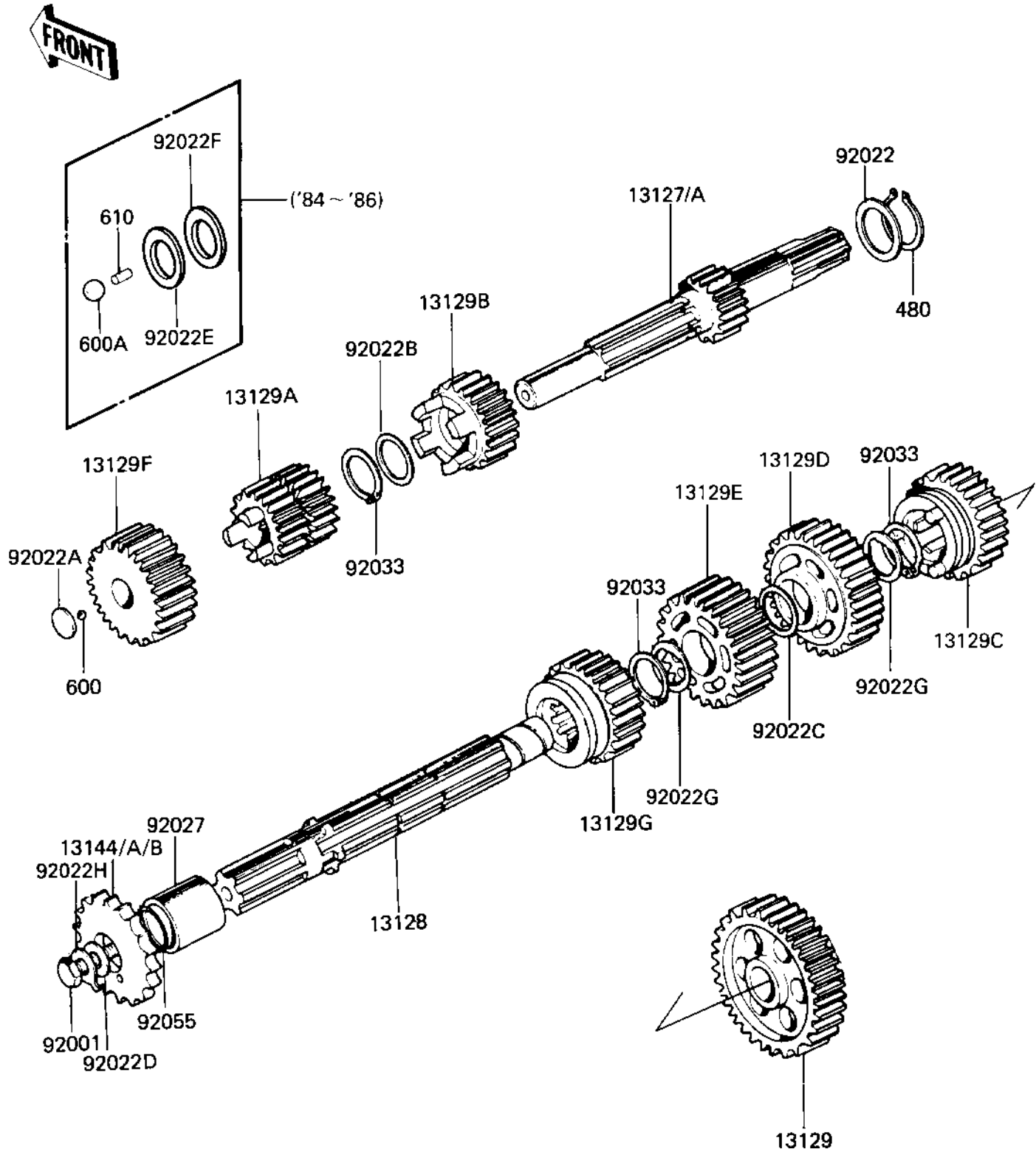


1984 KD80 PARTS DIAGRAM

TRANSMISSION

E1361-0131



1984 KD80 PARTS LIST

TRANSMISSION

| ITEM NAME | PART NUMBER | QUANTITY |
|--------------------------------------|-------------|----------|
| SHAFT-TRANSMISSION IN (Ref # 13127A) | 13127-1031 | 1 |
| SHAFT OUTPUT (Ref # 13128) | 13128-021 | 1 |
| LOW GEAR OUTPUT SHAFT (Ref # 13129) | 13129-010 | 1 |
| 2ND&3RD GEAR,DRIVE (Ref # 13129A) | 13129-1052 | 1 |
| 4TH GEAR,DRIVE (Ref # 13129B) | 13129-1053 | 1 |
| GEAR-TRANSMISSION SPU (Ref # 13129C) | 13129-1708 | 1 |
| 2ND GEAR OUTPUT SHAFT (Ref # 13129D) | 13131-008 | 1 |
| 3RD GEAR OUTPUT SHAFT (Ref # 13129E) | 13133-005 | 1 |
| GEAR,INPUT TOP,24T (Ref # 13129F) | 13129-1927 | 1 |
| TOP GEAR OUTPUT SHAFT (Ref # 13129G) | 13137-012 | 1 |
| ENGINE SPROCKET,13T (Ref # 13144) | 13144-053 | 1 |
| ENGINE SPROCKET,1ST (Ref # 13144A) | 13144-054 | 1 |
| SPROCKET-OUTPUT,14T (Ref # 13144B) | 13144-1058 | 1 |
| BOLT,UPSET,8X16 (Ref # 92001) | 92001-1368 | 1 |
| WASHER THRUST (Ref # 92022) | 92022-053 | 1 |
| WASHER THRUST (Ref # 92022B) | 92022-118 | 1 |
| WASHER THRUST (Ref # 92022C) | 92022-146 | 1 |
| WASHER,ENGINE SPRCKT (Ref # 92022D) | 92022-266 | 1 |
| WASHER,PLAIN (Ref # 92022E) | 92022-272 | 1 |
| WASHER,PLAIN (Ref # 92022F) | 92022-273 | 1 |
| WASHER-LOCK (Ref # 92022G) | 92024-030 | 1 |
| WASHER,LOCK,8MM (Ref # 92022H) | 92030-012 | 1 |
| COLLAR,ENG SPROCKET (Ref # 92027) | 92027-1595 | 1 |
| CIRCLIP (Ref # 92033) | 92033-014 | 1 |
| "O" RING (Ref # 92055) | 92055-022 | 1 |
| CIRCLIP 16MM (Ref # 480) | 480J1600 | 1 |
| BALL STEEL 7/32' (Ref # 600) | 600A0700 | 1 |
| BALL STEEL 9/32' (Ref # 600A) | 600A0900 | 1 |
| PIN-DOWEL,4X6 (Ref # 610) | 610A0406 | 1 |