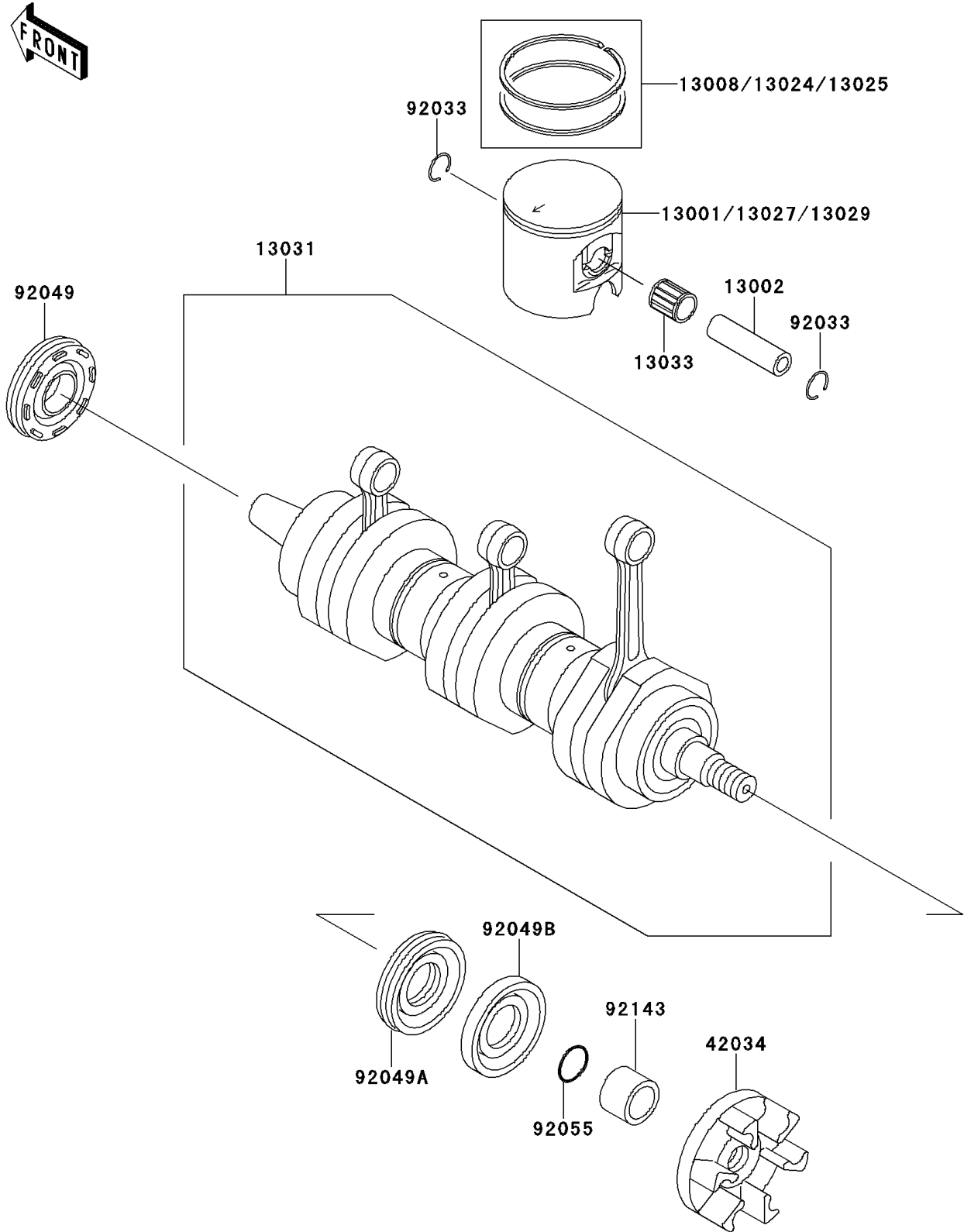


# 1996 900 ZXi PARTS DIAGRAM

Crankshaft/Piston(s)

E1320



# 1996 900 ZXi PARTS LIST

## Crankshaft/Piston(s)

| ITEM NAME                                 | PART NUMBER | QUANTITY |
|---|-------------|----------|
| PISTON-ENGINE,STD (Ref # 13001)           | 13001-3720  | 3        |
| PIN-PISTON (Ref # 13002)                  | 13002-3705  | 3        |
| RING-SET-PISTON,STD (Ref # 13008)         | 13008-3709  | 3        |
| RING-SET-PISTON LL,O/S,1.00 (Ref # 13024) | 13024-3707  | AR       |
| RING-SET-PISTON L,O/S,0.50 (Ref # 13025)  | 13025-3707  | AR       |
| PISTON-ENGINE LL,O/S,1.00 (Ref # 13027)   | 13027-3712  | AR       |
| PISTON-ENGINE L,O/S,0.50 (Ref # 13029)    | 13029-3712  | AR       |
| CRANKSHAFT-COMP (Ref # 13031)             | 13031-3725  | 1        |
| BEARING-SMALL END (Ref # 13033)           | 13033-3702  | 3        |
| COUPLING (Ref # 42034)                    | 42034-3708  | 1        |
| RING-SNAP (Ref # 92033)                   | 92033-1207  | 6        |
| SEAL-OIL,FWJ7307210ZS (Ref # 92049)       | 92049-3713  | 1        |
| SEAL-OIL (Ref # 92049A)                   | 92049-3715  | 1        |
| SEAL-OIL (Ref # 92049B)                   | 92049-3716  | 1        |
| RING-O,20.8X2.4 (Ref # 92055)             | 92055-3740  | 1        |
| COLLAR (Ref # 92143)                      | 92143-3745  | 1        |