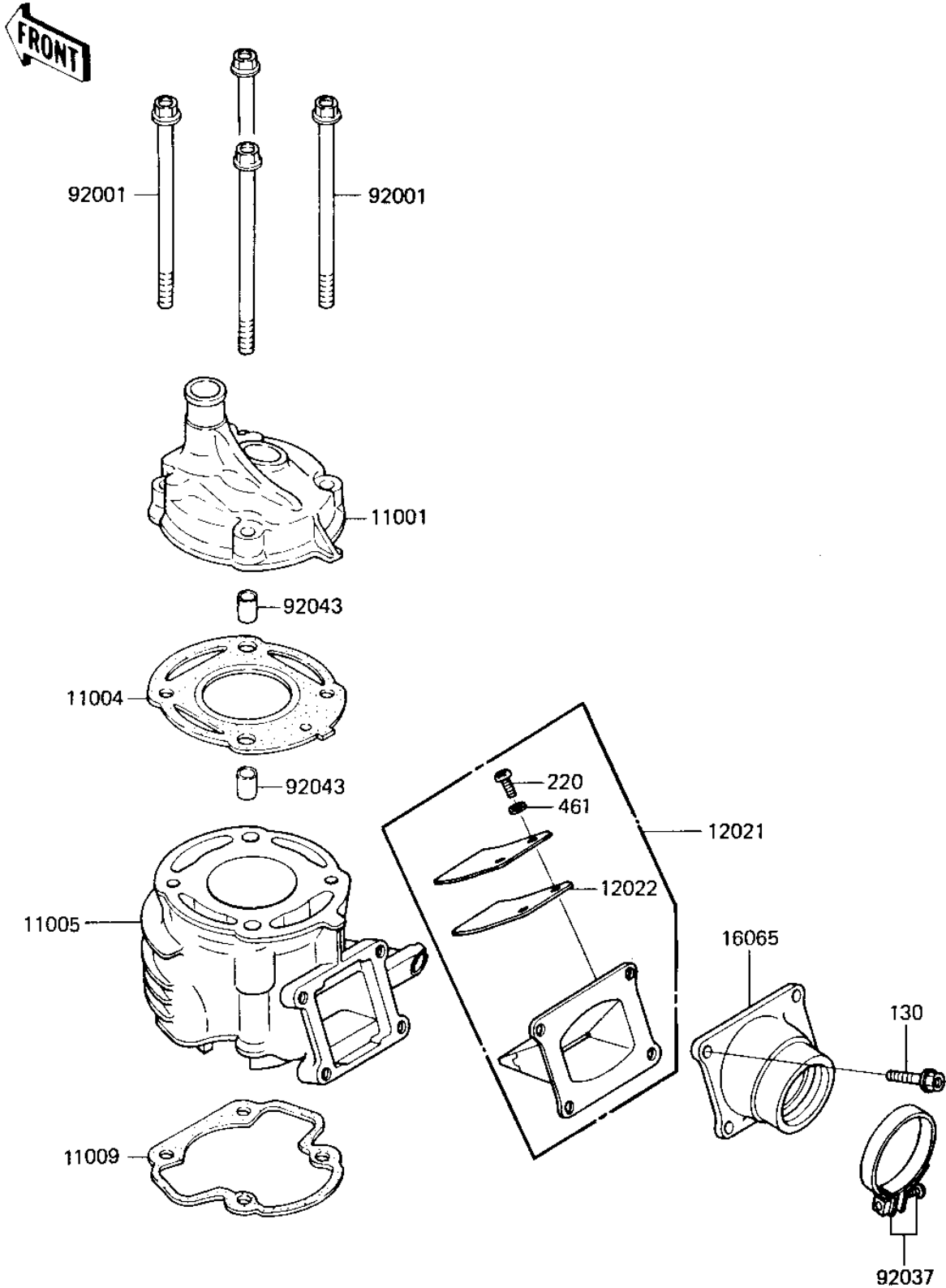


# 1985 KX80 PARTS DIAGRAM

CYLINDER HEAD/CYLINDER/REED VALVE ('84 K)

E1111-0109



## 1985 KX80 PARTS LIST

CYLINDER HEAD/CYLINDER/REED VALVE ('84 K)

| ITEM NAME                          | PART NUMBER | QUANTITY |
|------------------------------------|-------------|----------|
| HEAD CYLINDER (Ref # 11001)        | 11001-1144  | 1        |
| GASKET-HEAD,CYLINDER (Ref # 11004) | 11004-1058  | 1        |
| CYLINDER-ENGINE (Ref # 11005)      | 11005-1394  | 1        |
| GASKET,CYLINDER BASE (Ref # 11009) | 11009-1975  | 1        |
| VALVE-ASSY-REED (Ref # 12021)      | 12021-1052  | 1        |
| VALVE-REED (Ref # 12022)           | 12022-1052  | 2        |
| HOLDER-CARBURETOR (Ref # 16065)    | 16065-1102  | 1        |
| BOLT,8X120 (Ref # 92001)           | 92002-1332  | 4        |
| CLAMP (Ref # 92037)                | 92037-1172  | 1        |
| PIN,DOWEL,10X8.2X14 (Ref # 92043)  | 92043-1037  | 2        |
| BOLT,FLANGED,6X20 (Ref # 130)      | 130G0620    | 4        |
| SCREW PAN HEAD 3X8 (Ref # 220)     | 220B0308    | 4        |
| WASHER SPRING 3MM (Ref # 461)      | 461F0300    | 4        |