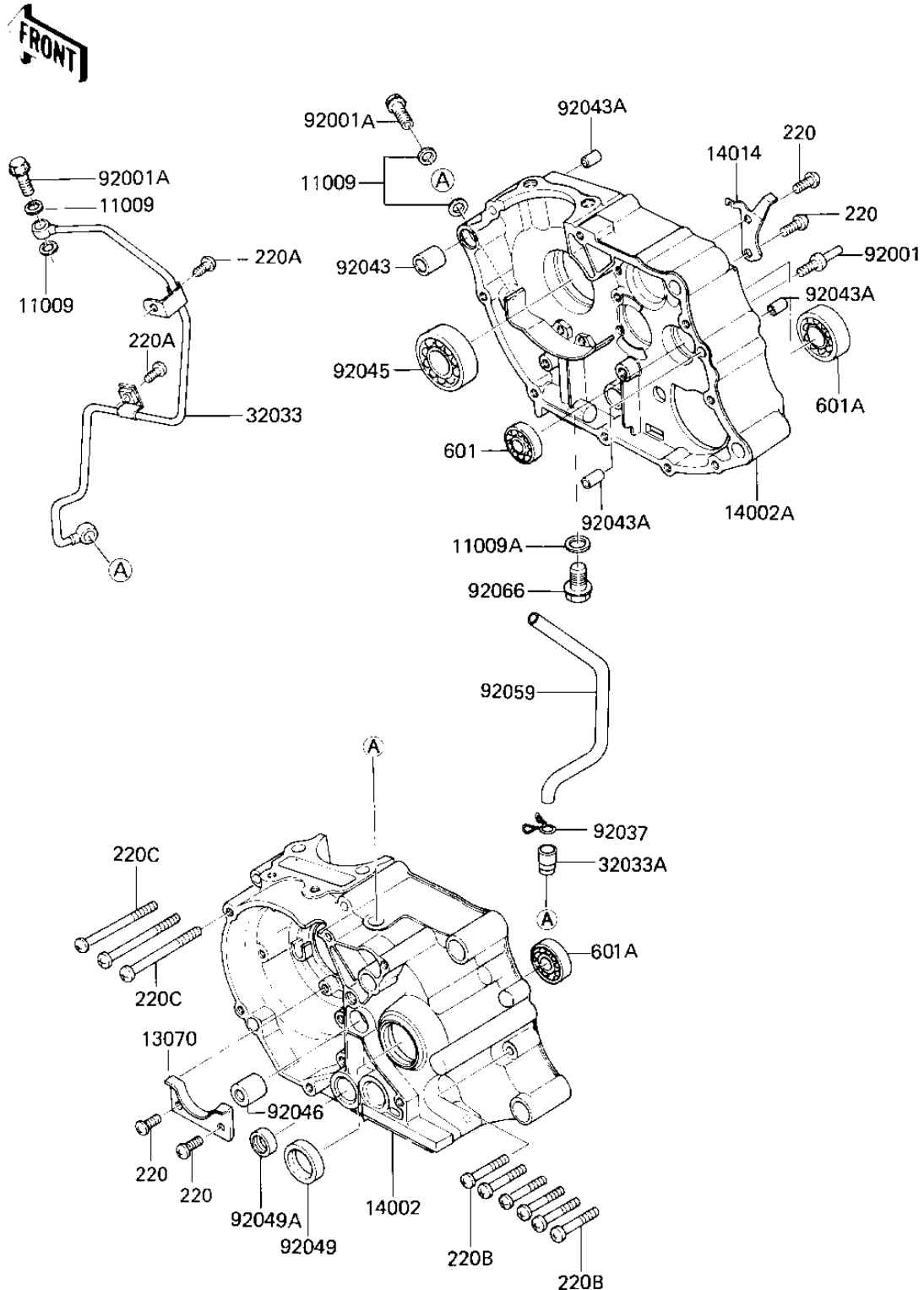


## 1985 KLT110 PARTS DIAGRAM

### CRANKCASE

E1411-0102



## 1985 KLT110 PARTS LIST

### CRANKCASE

| ITEM NAME                           | PART NUMBER | QUANTITY |
|-------------------------------------|-------------|----------|
| GASKET,OIL PIPE,8.2X1 (Ref # 11009) | 11009-1344  | 1        |
| GASKET,DRIN PLUG (Ref # 11009A)     | 92065-097   | 1        |
| GUIDE,CAM CHAIN (Ref # 13070)       | 13070-1046  | 1        |
| CRANKCASE,LH (Ref # 14002)          | 14002-1242  | 1        |
| CRANKCASE,RH (Ref # 14002A)         | 14002-1243  | 1        |
| PLATE-POSITION (Ref # 14014)        | 14014-1031  | 1        |
| PIPE-A,OIL (Ref # 32033)            | 32033-1089  | 1        |
| PIPE,BREATHER (Ref # 32033A)        | 32033-1518  | 1        |
| BOLT,RETURN SPRING (Ref # 92001)    | 92001-1401  | 1        |
| BOLT,BANJO,8X22 (Ref # 92001A)      | 92002-1871  | 1        |
| CLAMP,BREATHER HOSE (Ref # 92037)   | 92037-192   | 1        |
| PIN,DOWEL,14MM (Ref # 92043)        | 92042-032   | 1        |
| PIN,DOWEL,6.2X8X14 (Ref # 92043A)   | 92043-1263  | 1        |
| BEARING-BALL,#6304 (Ref # 92045)    | 92045-1107  | 1        |
| BEARING-NEEDLE,BK1312 (Ref # 92046) | 92046-1034  | 1        |
| OIL SEAL,SC22325 (Ref # 92049)      | 92049-1048  | 1        |
| OIL SEAL,TB13225.5 (Ref # 92049A)   | 92051-005   | 1        |
| TUBE,BREATHER (Ref # 92059)         | 92059-1510  | 1        |
| PLUG,OIL DRAIN,12X15 (Ref # 92066)  | 92066-1174  | 1        |
| SCREW PAN HEAD 6X14 (Ref # 220)     | 220B0614    | 1        |
| SCREW-PAN-CROS (Ref # 220A)         | 220X0612    | 1        |
| SCREW-PAN-CROS (Ref # 220B)         | 220X0635    | 1        |
| SCREW-PAN-CROS (Ref # 220C)         | 220X0675    | 1        |
| BEARING-BALL (Ref # 601)            | 601A6201    | 1        |
| BEARING BALL #6203 (Ref # 601A)     | 601A6203    | 1        |