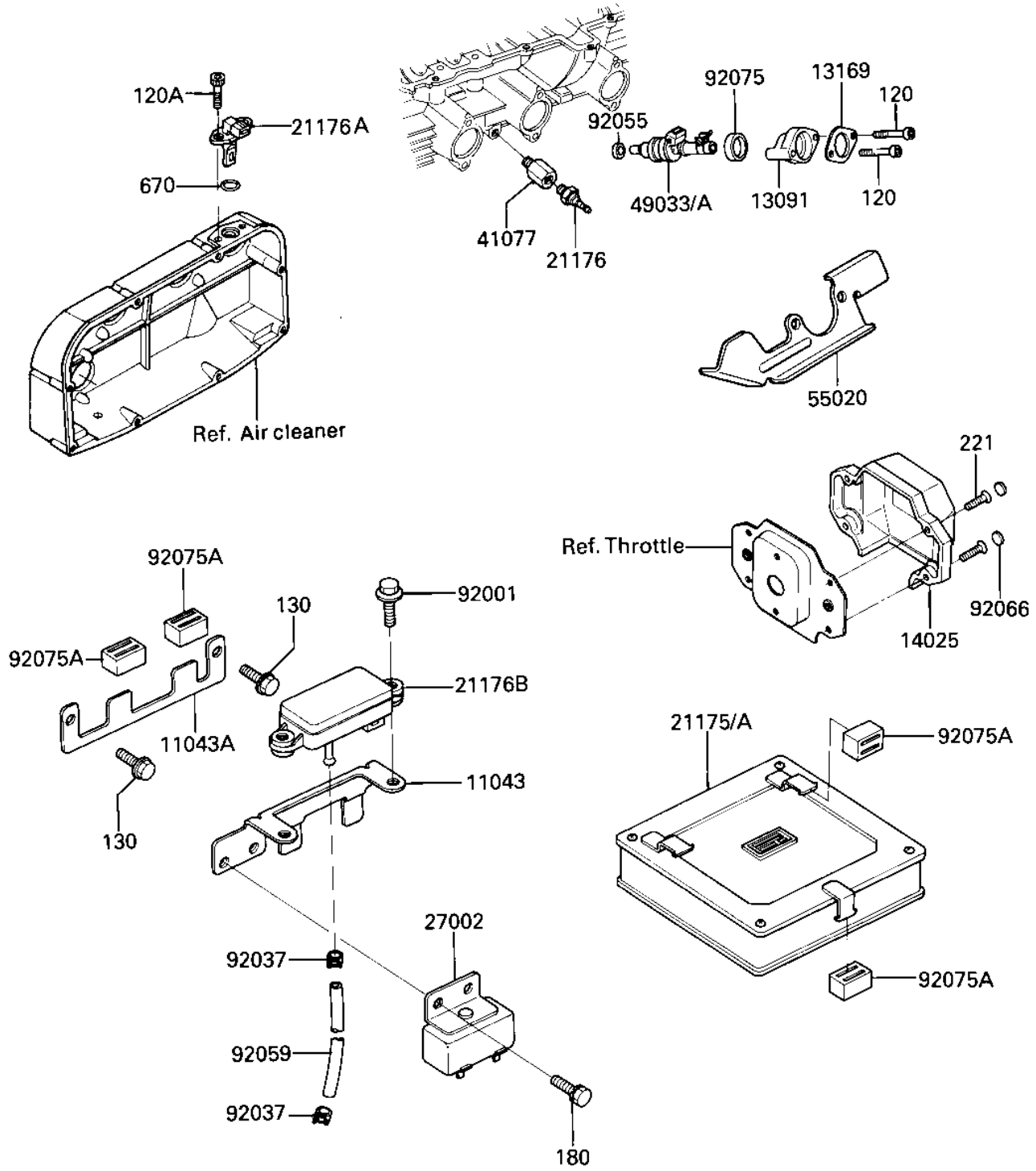


# 1985 GPz 750 Turbo PARTS DIAGRAM

FUEL INJECTION EQUIPMENT

E1530-0008



# 1985 GPz 750 Turbo PARTS LIST

## FUEL INJECTION EQUIPMENT

ITEM NAME	PART NUMBER	QUANTITY
BRACKET-B,SENSOR (Ref # 11043)	11043-1231	1
BRACKET,SENSOR (Ref # 11043A)	11043-1473	1
HOLDER,FUEL INJECTOR (Ref # 13091)	13091-1092	4
PLATE,FUEL INJECTOR,B (Ref # 13169)	13169-1434	4
COVER,THROTTLE SENSOR (Ref # 14025)	14025-1753	1
CONTROL UNIT-ELECTRON (Ref # 21175)	21175-1051	1
CONTROL UNIT-ELECTRONIC (Canad (Ref # 21175A)	21175-1053	1
SENSOR-TEMPERATURE (Ref # 21176)	21176-1002	1
SENSOR,AIR TEMPERATUR (Ref # 21176A)	21176-1051	1
SENSOR,PRESSURE (Ref # 21176B)	21176-1052	1
RELAY ASSY (Ref # 27002)	27002-1007	1
ADAPTER,SENSOR (Ref # 41077)	41077-1004	1
NOZZLE-INJECTION (Ref # 49033)	49033-1052	4
49033-1052 (Canada) (Ref # 49033A)	49033-1053	4
GUARD,FUEL INJECTOR (Ref # 55020)	55020-1185	7
BOLT (Ref # 92001)	92001-1826	2
CLAMP,TUBE (Ref # 92037)	92037-1461	2
INSULATOR,FUEL INJECT (Ref # 92055)	92055-1082	4
TUBE,4X9X80 (Ref # 92059)	92059-1365	1
PLUG,THR SENSOR COVER (Ref # 92066)	92066-1107	4
INSULATOR,FUEL INJECT (Ref # 92075)	92075-1240	4
DAMPER,CONTROL UNIT (Ref # 92075A)	92075-1312	5
BOLT-SOCKET (Ref # 120)	120S0540	8
BOLT-SOCKET (Ref # 120A)	120S0610	2
BOLT-FLANGED,6X12,BLA (Ref # 130)	130J0612	2
BOLT 6X12 (Ref # 180)	180B0612	2
SCREW-CSK-CROS (Ref # 221)	221C0310	4
"O" RING,12MM (Ref # 670)	670B2012	1