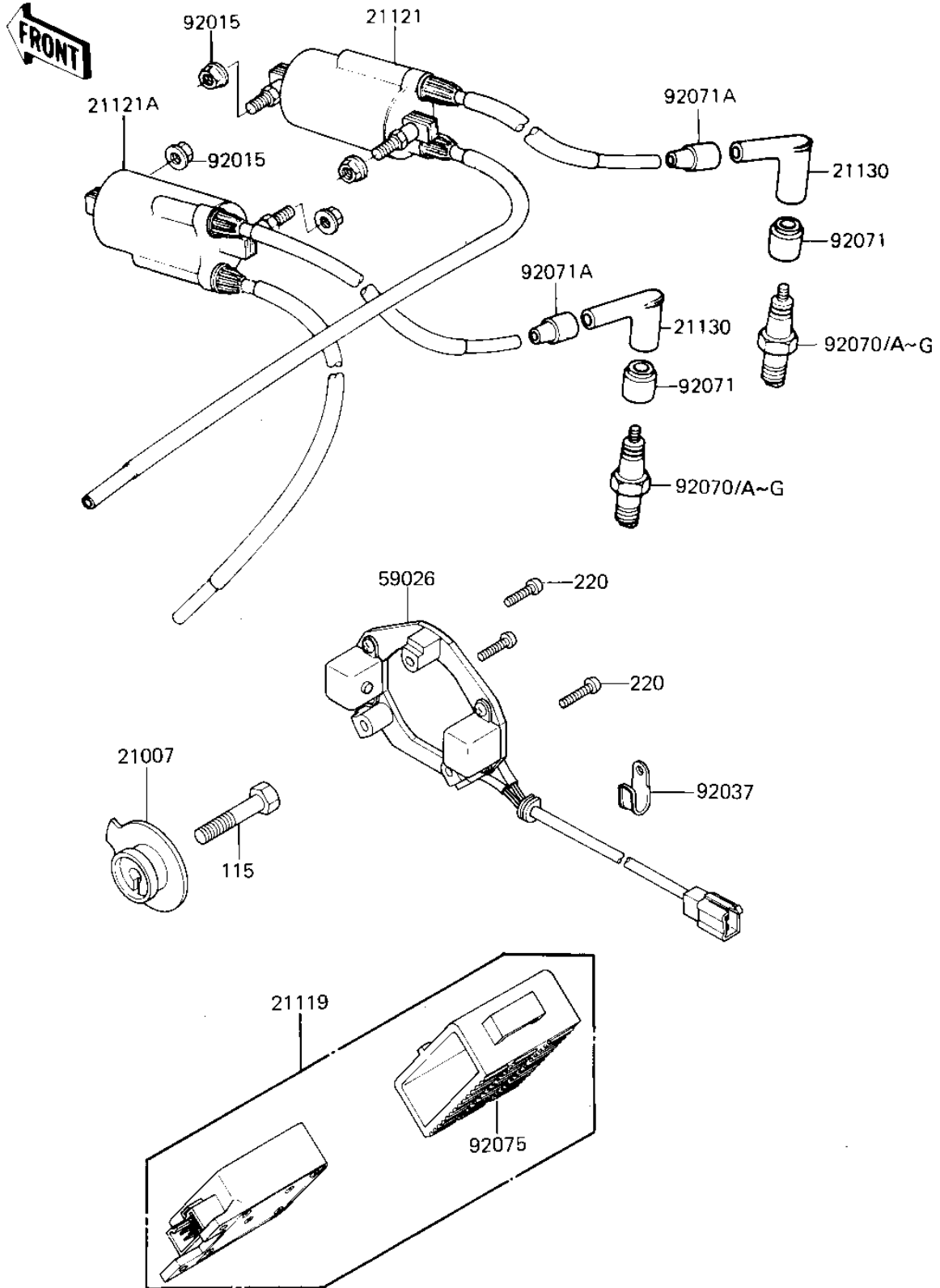


1985 GPz 750 PARTS DIAGRAM

IGNITION

E1830-0171



1985 GPz 750 PARTS LIST

IGNITION

| ITEM NAME | PART NUMBER | QUANTITY |
|--|-------------|----------|
| ROTOR,PULSING COIL (Ref # 21007) | 21007-1069 | 1 |
| IGNITER (Ref # 21119) | 21119-1075 | 1 |
| COIL,IGNITION #1.#4 (Ref # 21121) | 21121-1027 | 1 |
| COIL,IGNITION #2.#3 (Ref # 21121A) | 21121-1028 | 1 |
| CAP-SPARK PLUG,RTFM20 (Ref # 21130) | 21130-1007 | 4 |
| COIL-PULSING (Ref # 59026) | 59026-1026 | 1 |
| NUT-6MM (Ref # 92015) | 92015-1078 | 4 |
| CLAMP,WIRING HARNESS (Ref # 92037) | 21126-008 | 2 |
| SPARK PLUG B8ES (Ref # 92070) | B8ES | 4 |
| SPARK PLUG B9ES (Ref # 92070A) | B9ES | 4 |
| SPARK PLUG BR8ES (Ref # 92070C) | BR8ES | 4 |
| SPARK PLUG BR9ES (Canada) (Ref # 92070G) | 92070-1053 | 4 |
| GROMMET-PLUG CAP,A (Ref # 92071) | 21131-004 | 4 |
| GROMMET,SPARK PLG CAP (Ref # 92071A) | 21132-005 | 4 |
| DAMPER,IGNITER (Ref # 92075) | 92075-1504 | 1 |
| BOLT-SMALL-UPSET (Ref # 115) | 115G0845 | 1 |
| SCREW-PAN-CROS,5X25 (Ref # 220) | 220B0525 | 3 |