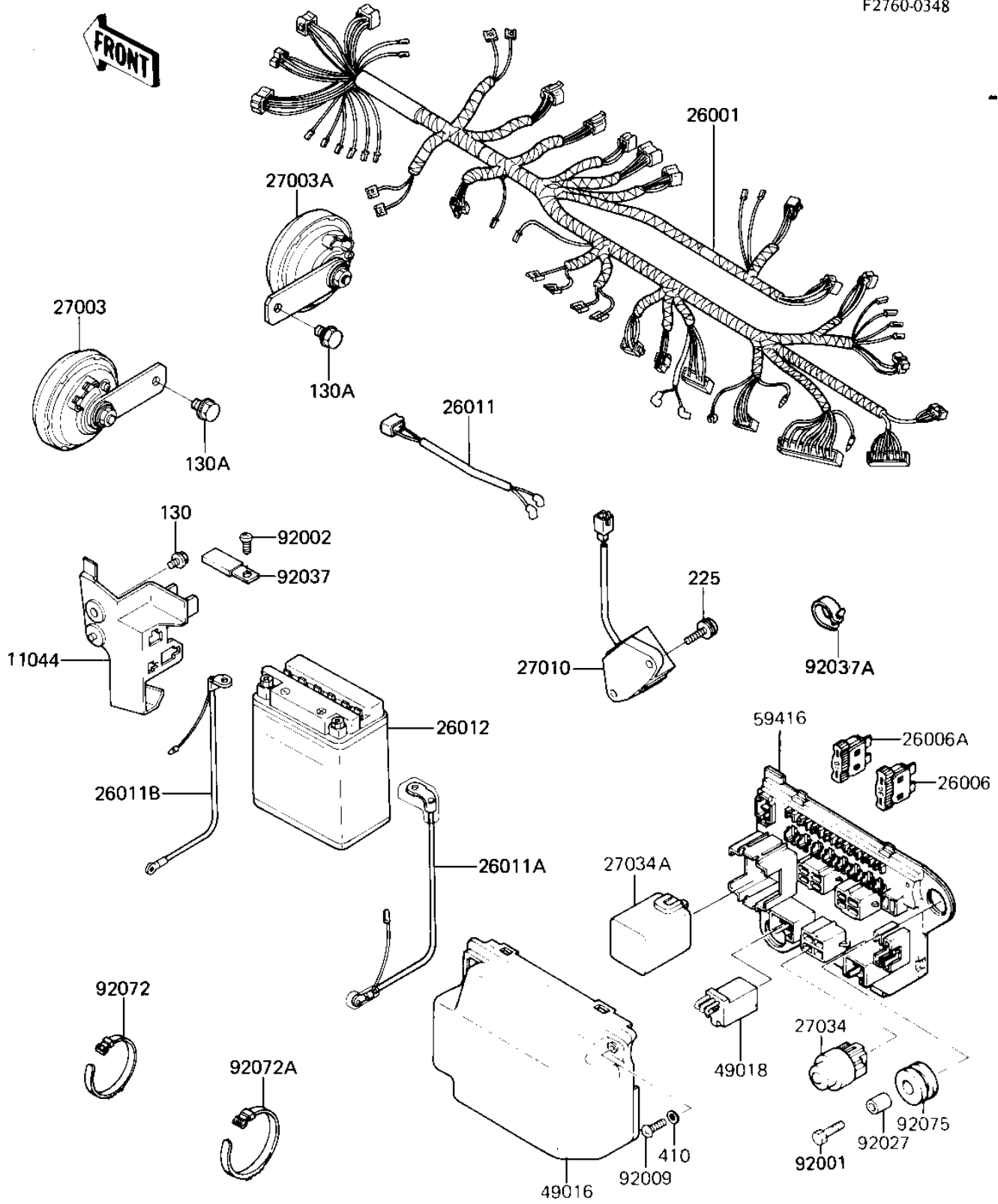


# 1986 Eliminator PARTS DIAGRAM

## CHASSIS ELECTRICAL EQUIPMENT

F2760-0348



# 1986 Eliminator PARTS LIST

## CHASSIS ELECTRICAL EQUIPMENT

ITEM NAME	PART NUMBER	QUANTITY
BRACKET,RELAY&COUPLER (Ref # 11044)	11045-1385	1
HARNESS,MAIN (Ref # 26001)	26001-1731	1
FUSE,30A-G (Ref # 26006)	26006-1006	2
FUSE,10A-R (Ref # 26006A)	26006-1007	1
WIRE-LEAD,BRAKE SWITC (Ref # 26011)	26011-1313	1
WIRE-LEAD,BATTERY(+) (Ref # 26011A)	26011-1329	1
WIRE-LEAD,BATTERY(-) (Ref # 26011B)	26011-1330	1
YUA BAT YB14L-A2 (Ref # 26012)	26012-1008	1
HORN,LH (Ref # 27003)	27003-1229	1
HORN,RH (Ref # 27003A)	27003-1230	1
SWITCH,RESERVE LIGHTI (Ref # 27010)	27010-1069	1
RELAY,STARTER (Ref # 27034)	27034-1006	3
RELAY,FLASHER (Ref # 27034A)	27034-1007	1
COVER-SEAL (Ref # 49016)	49016-1050	1
DIODE (Ref # 49018)	49018-1006	2
CASE-ELECTRIC (Ref # 59416)	59416-1056	1
BOLT,6X22 (Ref # 92001)	92002-1262	2
BOLT (Ref # 92002)	92002-1351	1
SCREW,TAPPING,4X10 (Ref # 92009)	92009-1021	2
COLLAR,REAR FENDER (Ref # 92027)	92027-162	2
CLAMP,WIRING HARNESS (Ref # 92037)	92037-1069	2
CLAMP (Ref # 92037A)	92037-1163	1
BAND,SHORT (Ref # 92072)	92072-030	2
BAND,WIRING HARNESS (Ref # 92072A)	92072-056	4
DAMPER (Ref # 92075)	92075-1562	2
BOLT,FLANGED,6X8 (Ref # 130)	130B0608	2
BOLT-FLANGED,8X12,BLA (Ref # 130A)	130C0812	2
SCREW-PAN-WSP-CROS (Ref # 225)	225B0620	2
WASHER PLAIN 4MM (Ref # 410)	410B0400	2