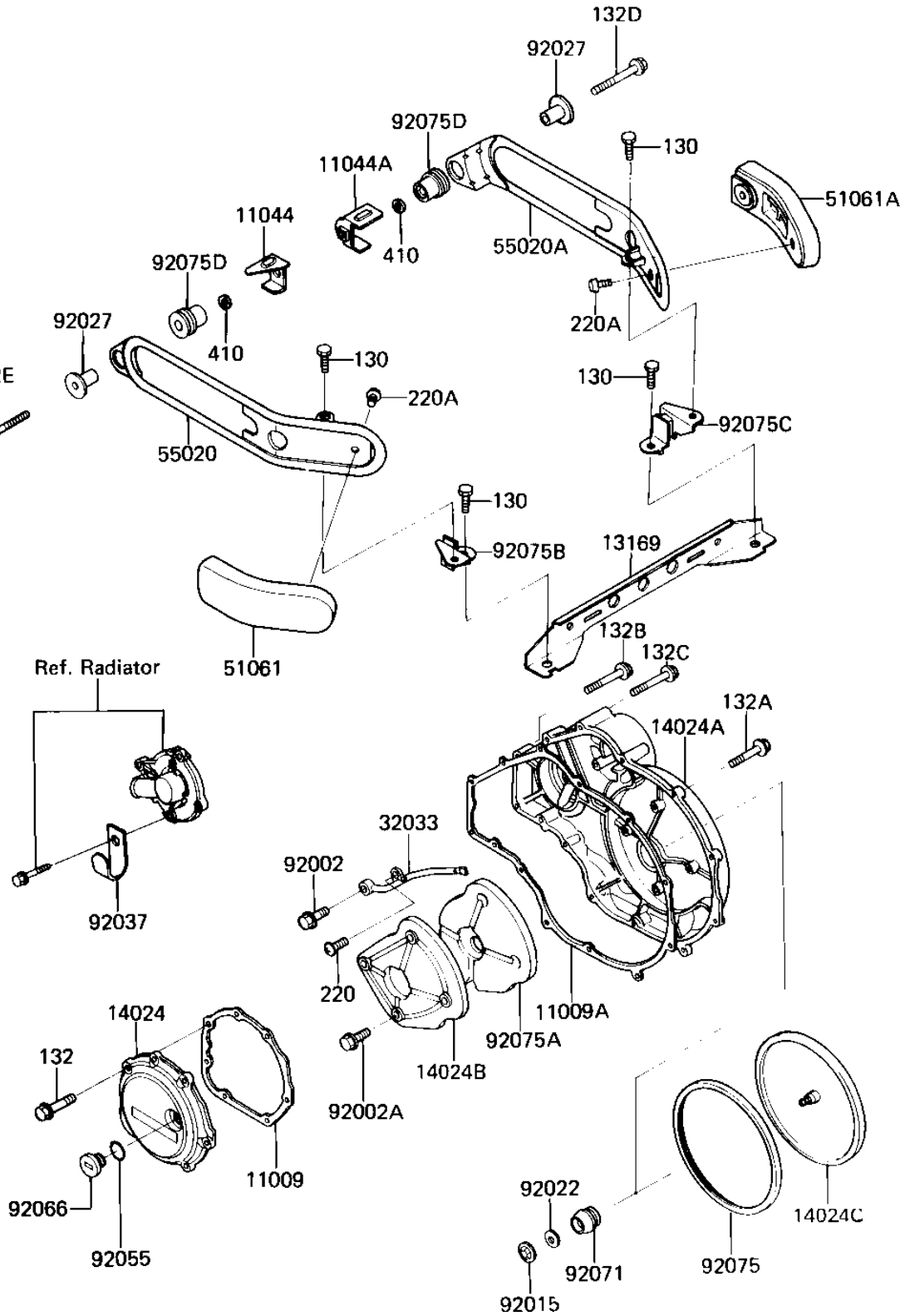


# 1986 Eliminator PARTS DIAGRAM

ENGINE COVERS/GUARDS

E1431-0175



# 1986 Eliminator PARTS LIST

## ENGINE COVERS/GUARDS

ITEM NAME	PART NUMBER	QUANTITY
GASKET,COVER,LH (Ref # 11009)	11009-1863	1
GASKET,CLUTCH COVER (Ref # 11009A)	11009-1860	1
BRACKET,LH (Ref # 11044)	11044-1291	1
BRACKET,RH (Ref # 11044A)	11044-1292	1
PLATE,GUARD (Ref # 13169)	13169-1956	1
COVER,LH (Ref # 14024)	14024-1066	1
COVER,CLUTCH (Ref # 14024A)	14024-1067	1
COVER,SOUND ARRESTER (Ref # 14024B)	14025-1740	1
COVER,CLUTCH COVER (Ref # 14024C)	14025-1814	1
PIPE,CLUTCH COVER (Ref # 32033)	32033-1204	1
PAD-KNEE,LH (Ref # 51061)	51061-1051	1
PAD-KNEE,RH (Ref # 51061A)	51061-1052	1
GUARD,LH (Ref # 55020)	55020-1201	1
GUARD,RH (Ref # 55020A)	55020-1202	1
BOLT,BANJO,8X20 (Ref # 92002)	92001-1855	1
BOLT,6X10 (Ref # 92002A)	92002-1449	4
NUT,LOCK,5MM (Ref # 92015)	92018-004	1
WASHER PL 5.5X20X1.2 (Ref # 92022)	92022-104	1
COLLAR (Ref # 92027)	92027-1956	2
CLAMP,WIRING HARNESS (Ref # 92037)	92037-1069	1
RING-O (Ref # 92055)	92055-1146	1
PLUG,COVER,LH (Ref # 92066)	92066-1218	1
GROMMET,CLUTCH COVER (Ref # 92071)	92071-1108	1
DAMPER,CLUTCH COVER (Ref # 92075)	92075-1594	1
DAMPER,SOUND (Ref # 92075A)	92075-1708	1
DAMPER (Ref # 92075B)	92075-1756	1
DAMPER (Ref # 92075C)	92075-1757	1
DAMPER (Ref # 92075D)	92075-1779	2
BOLT-FLANGED (Ref # 130)	130J0610	4

# 1986 Eliminator PARTS LIST

## ENGINE COVERS/GUARDS

ITEM NAME	PART NUMBER	QUANTITY
BOLT-FLANGED-SMALL (Ref # 132)	132J0620	7
BOLT-FLANGED-SMALL (Ref # 132A)	132J0625	6
BOLT-FLANGED-SMALL (Ref # 132B)	132J0640	4
BOLT-FLANGED-SMALL (Ref # 132C)	132J0655	2
BOLT-FLANGED-SMALL,8X (Ref # 132D)	132J0860	1
BOLT-FLANGED-SMALL (Ref # 132E)	132J0890	1
UNAVAILABLE IN PRICE BOOK (Ref # 220)	220B0910	1
SCREW-PAN-CROS,6X8 (Ref # 220A)	220C0608	2
WASHER PLAIN 8MM (Ref # 410)	410B0800	2