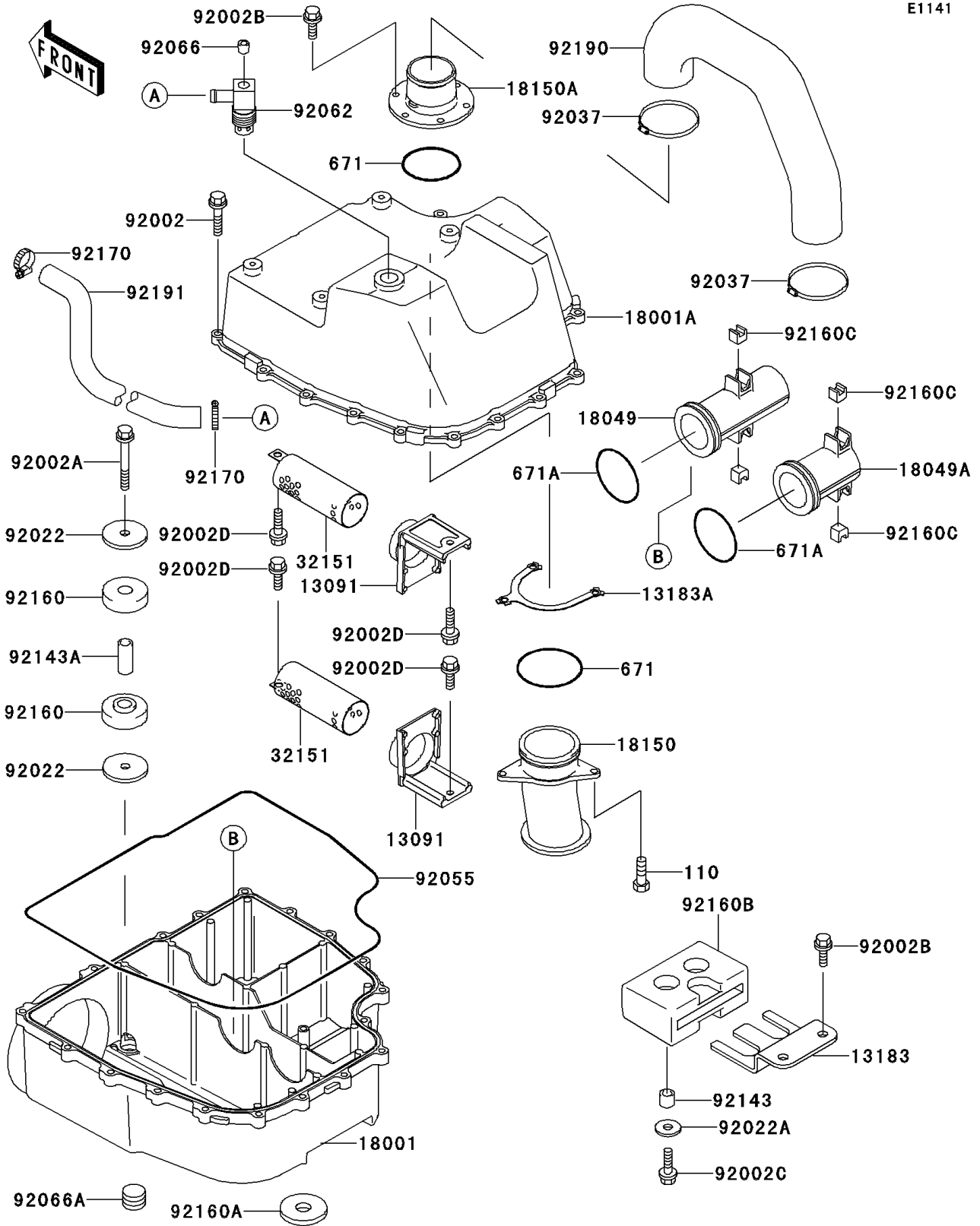


1996 SS PARTS DIAGRAM

Water Muffler

E1141



1996 SS PARTS LIST

Water Muffler

| ITEM NAME | PART NUMBER | QUANTITY |
|--------------------------------------|-------------|----------|
| BOLT,6X20 (Ref # 110) | 110R0620 | 3 |
| O RING,60MM (Ref # 671) | 671B2560 | 2 |
| O RING,WATER-MUFFLER (Ref # 671A) | 671C2550 | 2 |
| HOLDER (Ref # 13091) | 13091-3778 | 2 |
| PLATE (Ref # 13183) | 13183-3760 | 1 |
| PLATE (Ref # 13183A) | 13183-3818 | 1 |
| MUFFLER,WATER BOX,LWR (Ref # 18001) | 18001-3755 | 1 |
| MUFFLER,WATER BOX,UPP (Ref # 18001A) | 18001-3769 | 1 |
| PIPE-EXHAUST,L=120 (Ref # 18049) | 18049-3734 | 1 |
| PIPE-EXHAUST,L=77.5 (Ref # 18049A) | 18049-3735 | 1 |
| PIPE-MUFFLER,WATER (Ref # 18150) | 18150-3701 | 1 |
| PIPE-MUFFLER,WATER (Ref # 18150A) | 18150-3702 | 1 |
| PIPE (Ref # 32151) | 32151-3717 | 2 |
| BOLT,6X25 (Ref # 92002) | 92002-3714 | 17 |
| BOLT,6X45 (Ref # 92002A) | 92002-3717 | 1 |
| BOLT,6X16 (Ref # 92002B) | 92002-3728 | 8 |
| BOLT,6X20 (Ref # 92002C) | 92002-3755 | 2 |
| BOLT,6X12 (Ref # 92002D) | 92002-3763 | 4 |
| WASHER,6.5X32X3 (Ref # 92022) | 92022-3749 | 2 |
| WASHER (Ref # 92022A) | 92022-567 | 2 |
| CLAMP (Ref # 92037) | 92037-3009 | 2 |
| RING-O,WATER MUFFLER (Ref # 92055) | 92055-3718 | 1 |
| NOZZLE,WATER MUFFLER (Ref # 92062) | 92062-3708 | 1 |
| PLUG,OIL LINE,1/8X7 (Ref # 92066) | 92066-1227 | 1 |
| PLUG (Ref # 92066A) | 92066-3719 | 2 |
| COLLAR,7.5X10.5X9 (Ref # 92143) | 92143-3714 | 2 |
| COLLAR,7.5X10.5X24 (Ref # 92143A) | 92143-3717 | 1 |
| DAMPER,FR (Ref # 92160) | 92160-3730 | 2 |
| DAMPER,LWR (Ref # 92160A) | 92160-3732 | 3 |

1996 SS PARTS LIST

Water Muffler

| ITEM NAME | PART NUMBER | QUANTITY |
|--|-------------|----------|
| DAMPER,RR (Ref # 92160B) | 92160-3774 | 1 |
| DAMPER,WATER-MUFFLER (Ref # 92160C) | 92160-3794 | 4 |
| CLAMP (Ref # 92170) | 92170-3718 | 2 |
| TUBE,WATER BOX-TAIL PIPE (Ref # 92190) | 92190-3880 | 1 |
| TUBE,MUFFLER-WATER BOX (Ref # 92191) | 92191-3723 | 1 |