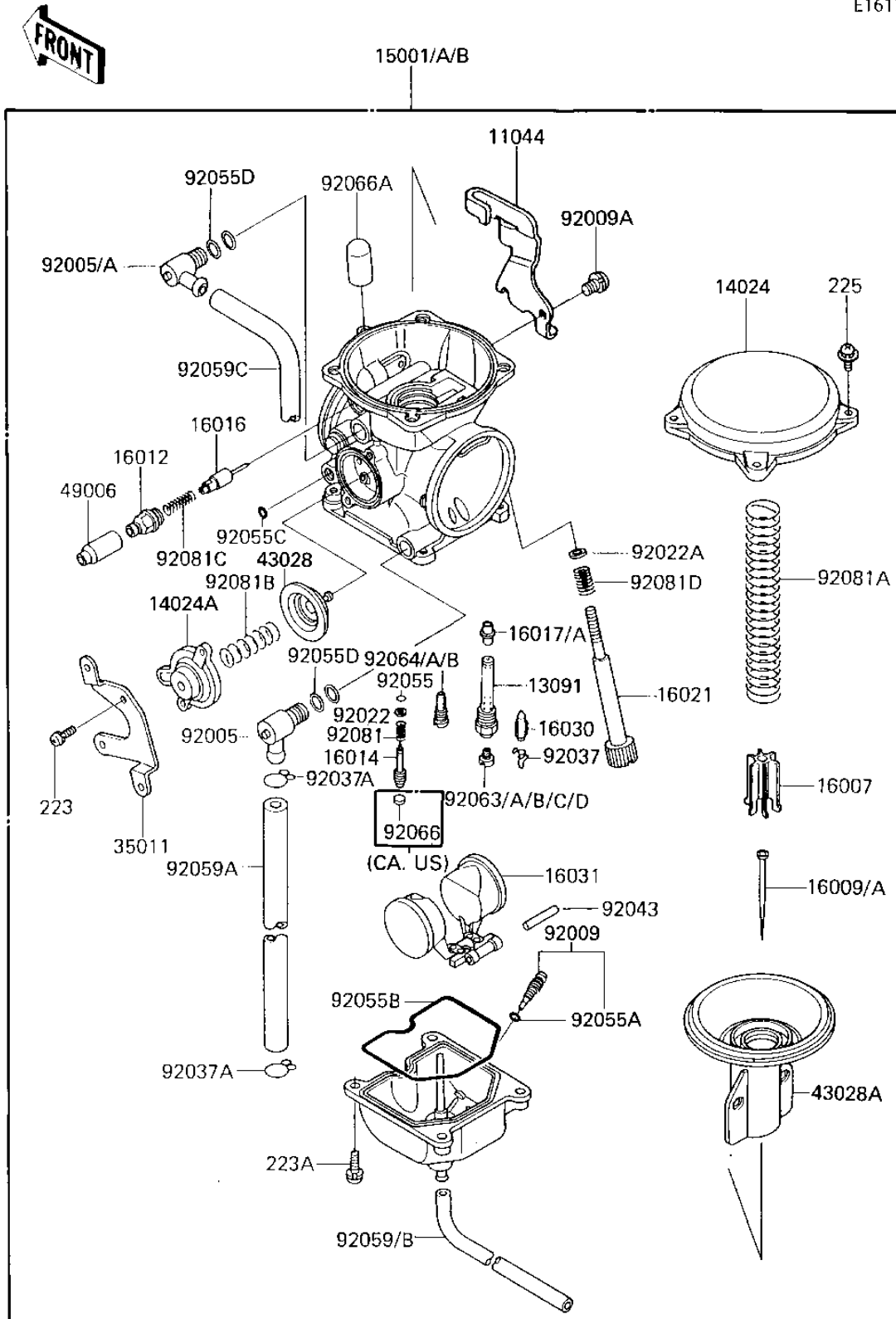


## 1985 KL600 PARTS DIAGRAM

CARBURETOR

E1611-0188



## 1985 KL600 PARTS LIST

### CARBURETOR

ITEM NAME	PART NUMBER	QUANTITY
BRACKET,THROTTLE CABL (Ref # 11044)	11044-1353	1
HOLDER,NEEDLE JET,03E (Ref # 13091)	13091-1312	1
COVER,MIXING CHAMBER (Ref # 14024)	14025-1890	1
COVER,AIR CUT VALVE (Ref # 14024A)	14025-1903	1
CARBURETOR-ASSY (Canada) (Ref # 15001)	15001-1142	1
CARBURETOR-ASSY (Ref # 15001A)	15001-1144	1
SEAT-SPRING,DIAPHRAGM (Ref # 16007)	16007-1113	1
NEEDLE-JET,N24B (Canada) (Ref # 16009)	16009-1234	1
NEEDLE-JET,24F (Ref # 16009A)	16009-1265	1
CAP-STARTER PLUNGER (Ref # 16012)	16012-1055	1
SCREW-PILOT AIR (Ref # 16014)	16014-1053	1
PLUNGER (Ref # 16016)	16016-1057	1
JET-NEEDLE,#6 (Canada) (Ref # 16017)	16017-1253	1
JET-NEEDLE,01A36 (Ref # 16017A)	16017-1254	1
SCREW-THROTTLE STOP (Ref # 16021)	16021-1109	1
VALVE-FLOAT (Ref # 16030)	16030-1057	1
FLOAT (Ref # 16031)	16031-1056	1
STAY,AIR CUT VALVE (Ref # 35011)	35011-1232	1
DIAPHRAGM,AIR CUT VAL (Ref # 43028)	43028-1053	1
DIAPHRAGM,VALVE (Ref # 43028A)	43028-1062	1
BOOT,STARTER PLUNGER (Ref # 49006)	49006-1165	1
FITTING,L-TYPE (Ref # 92005)	92005-1120	1
FITTING,L-TYPE (Ref # 92005A)	92005-1144	1
SCREW,DRAIN (Ref # 92009)	92009-1095	1
SCREW (Ref # 92009A)	92009-1365	1
WASHER,PLAIN (Ref # 92022)	92022-1003	1
WASHER,THROTTLE STOP (Ref # 92022A)	92022-1587	1
CLIP,FLOAT VALVE (Ref # 92037)	16044-007	1
CLAMP,TUBE (Ref # 92037A)	92037-1531	1

## 1985 KL600 PARTS LIST

### CARBURETOR

ITEM NAME	PART NUMBER	QUANTITY
PIN,FLOAT (Ref # 92043)	92043-1148	1
O RING,PILOT ADJ (Ref # 92055)	92055-1002	1
"O" RING,DRAIN SCREW (Ref # 92055A)	92055-1053	1
RING-O,FLOAT CHAMBER (Ref # 92055B)	92055-1222	1
RING-O (Ref # 92055C)	92055-1245	1
RING-O (Ref # 92055D)	92055-1246	1
HOSE,FUEL OVERFLOW (Ref # 92059)	92059-111	1
TUBE,6.5X11.5X150 (Ref # 92059A)	92059-1463	1
TUBE,3.5X6.5X210 (Ref # 92059B)	92059-1464	1
TUBE,6.5X9.5X500 (Ref # 92059C)	92059-1465	1
MAIN JET,#140 (Ref # 92063)	92063-1013	1
MAIN JET,#135 (Ref # 92063A)	92063-1014	1
MAIN JET,#138 (Ref # 92063B)	92063-1015	1
MAIN JET,2ND,#130 (Ref # 92063C)	92063-1075	1
JET-MAIN,#132 (Ref # 92063D)	92063-1076	1
JET-PILOT,#38 (Ref # 92064A)	92064-1050	1
JET-PILOT,#40 (Ref # 92064B)	92064-1108	1
PLUG,PILOT SCREW (Ref # 92066)	92066-1051	1
RUBBER PLUG (Ref # 92066A)	92068-006	1
SPRING,PIROT ADJ SCRW (Ref # 92081)	92081-1002	1
SPRING,DIAPHRAGM VALV (Ref # 92081A)	92081-1718	1
SPRING,AIR CUT VALVE (Ref # 92081B)	92081-1719	1
SPRING,PLUNGER (Ref # 92081C)	92081-1720	1
SPRING,THROTTLE STOP (Ref # 92081D)	92081-1721	1
SCREW-PAN-WS-CROS (Ref # 223)	223C0410	1
SCREW-PAN-WS-CROS (Ref # 223A)	223C0416	1
SCREW-PAN-WSP-CROS (Ref # 225)	225C0418	1