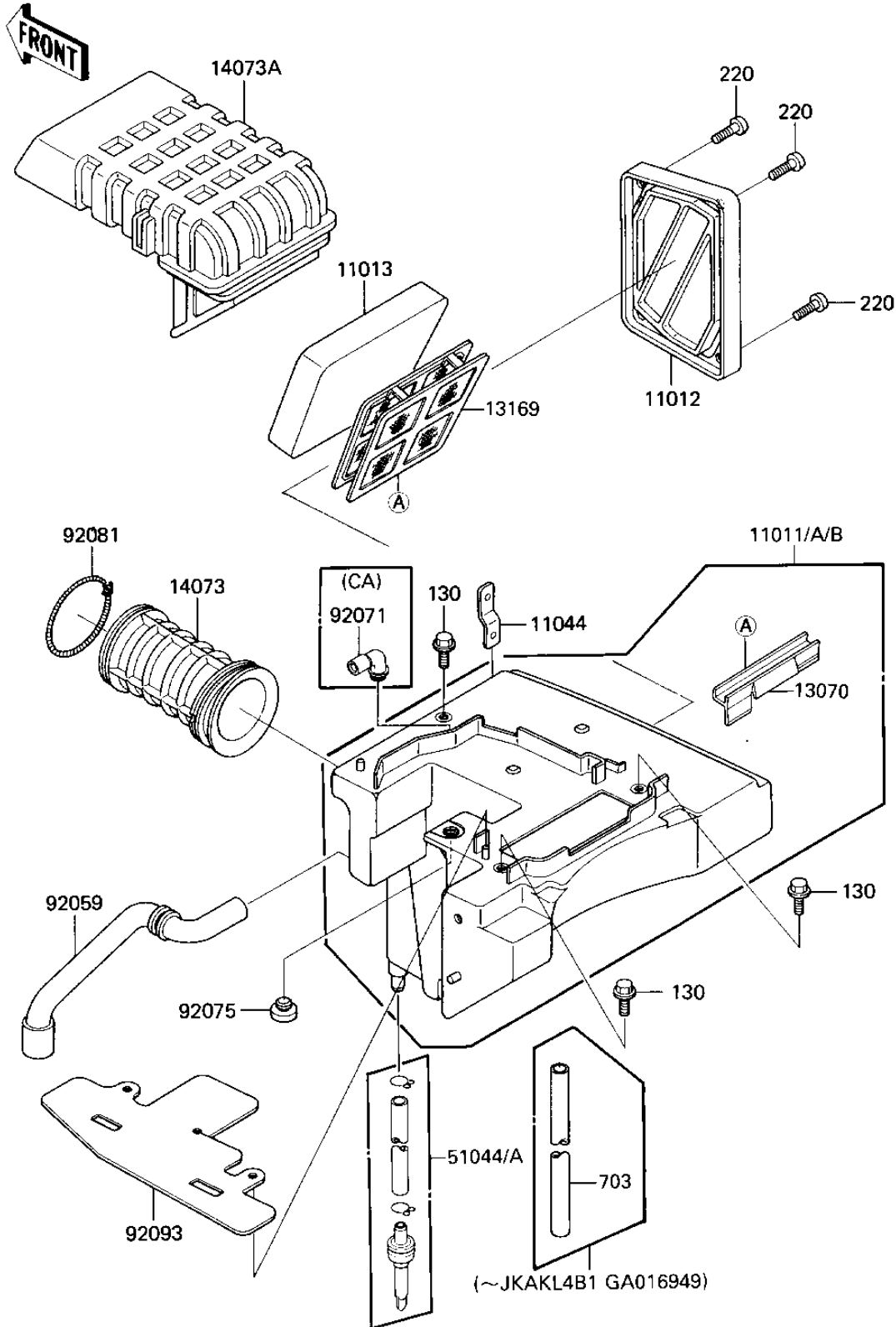


1985 KL600 PARTS DIAGRAM

AIR CLEANER

E1130-0182



1985 KL600 PARTS LIST

AIR CLEANER

| ITEM NAME | PART NUMBER | QUANTITY |
|-------------------------------------|-------------|----------|
| FILTER-ASSY-AIR (Ref # 11011) | 11010-5071 | 1 |
| CASE-AIR FILTER (Ref # 11011A) | 11011-1261 | 1 |
| CASE-AIR FILTER (Ref # 11011B) | 11011-1262 | 1 |
| CAP,ELEMENT (Ref # 11012) | 11012-1428 | 1 |
| ELEMENT-AIR FILTER (Ref # 11013) | 11013-1125 | 1 |
| BRACKET,AIR FILTER (Ref # 11044) | 11044-1278 | 1 |
| GUIDE (Ref # 13070) | 13070-1191 | 1 |
| PLATE,ELEMENT (Ref # 13169) | 13169-1883 | 1 |
| DUCT,CARBURATOR (Ref # 14073) | 14073-1202 | 1 |
| DUCT,INTAKE (Ref # 14073A) | 14073-1221 | 1 |
| TUBE-ASSY (Ref # 51044) | 51044-1087 | 2 |
| TUBE,BREATHER (Ref # 92059) | 92059-1584 | 1 |
| GROMMET,AIR FILTER (Ref # 92071) | 92071-1114 | 1 |
| DAMPER RUBB MAIN STND (Ref # 92075) | 92075-005 | 1 |
| SPRING,DUCT (Ref # 92081) | 92081-1638 | 1 |
| SEAL,AIR FILTER (Ref # 92093) | 92093-1195 | 1 |
| BOLT,FLANGED,6X12 (Ref # 130) | 130G0612 | 1 |
| SCREW-PAN-CROS, 6X14 (Ref # 220) | 220C0614 | 1 |
| TUBE-RUBBER (Ref # 703) | 703A07300 | 1 |