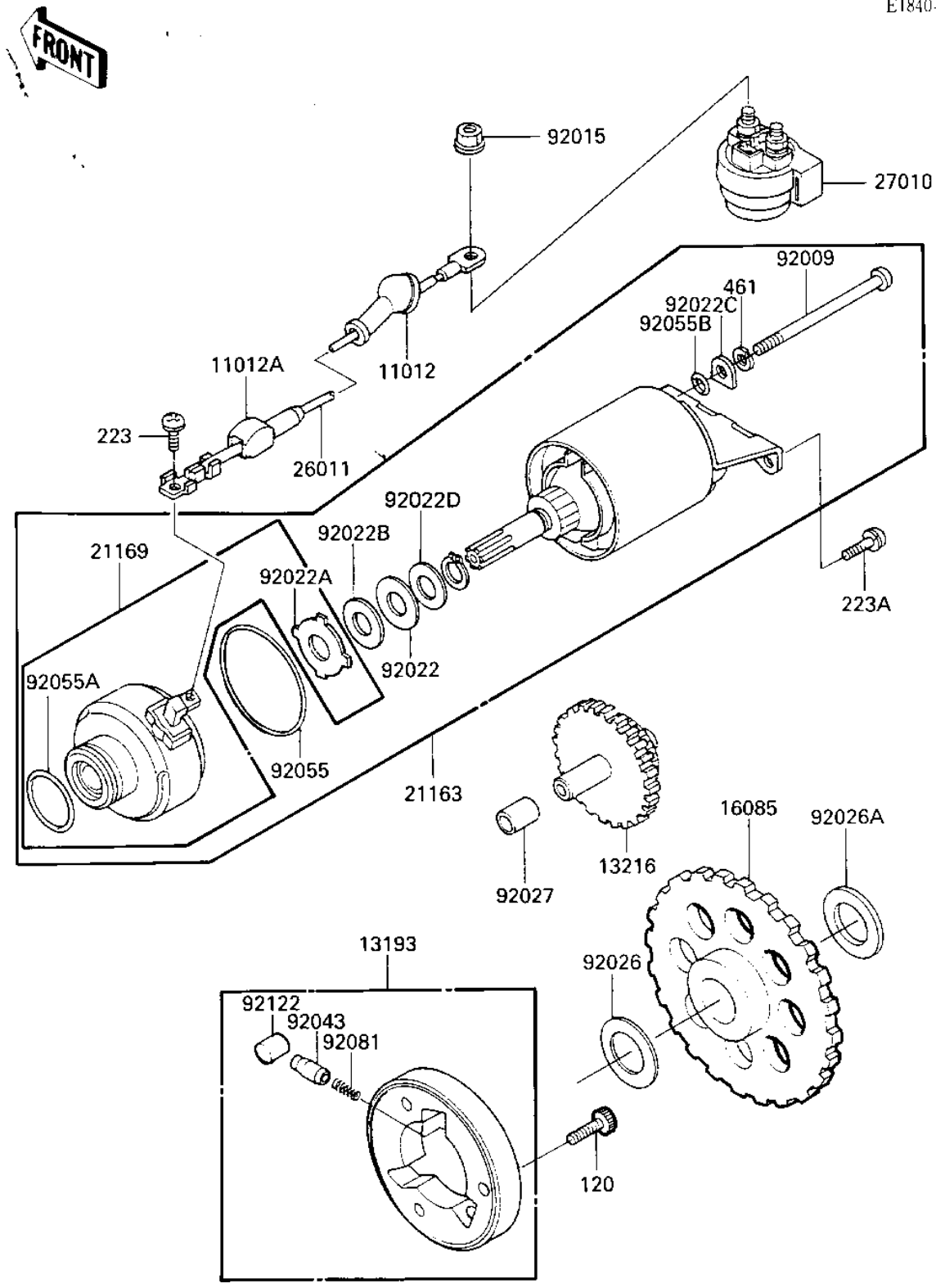


1985 Bayou 185 PARTS DIAGRAM

STARTER MOTOR/STARTER CLUTCH

E1840-0067



1985 Bayou 185 PARTS LIST

STARTER MOTOR/STARTER CLUTCH

ITEM NAME	PART NUMBER	QUANTITY
CAP,TERMINAL (Ref # 11012)	11012-1354	1
CAP,STARTER TERMINAL (Ref # 11012A)	11012-1465	1
CLUTCH ASSY,ONEWAY (Ref # 13193)	13193-1002	1
GEAR-COMP,IDLE (Ref # 13216)	13216-1054	1
GEAR-COMP,ONEWAY (Ref # 16085)	16085-1032	1
STARTER-ELECTRIC (Ref # 21163)	21163-1076	1
TERMINAL,STARTER MOTO (Ref # 21169)	21169-1052	1
WIRE-LEAD,STARTER MOT (Ref # 26011)	26011-1312	1
SWITCH,STARTER (Ref # 27010)	27010-1314	1
SCREW (Ref # 92009)	92009-1389	2
NUT-6MM (Ref # 92015)	92015-1078	2
WASHER,THRUST (Ref # 92022)	92022-1129	3
WASHER,THRUST SUPPORT (Ref # 92022A)	92022-1130	1
WASHER,BAKELITE (Ref # 92022B)	92022-1131	1
WASHER (Ref # 92022C)	92022-1697	2
WASHER,22X12.2X0.5 (Ref # 92022D)	92022-1714	1
WASHER 22X35.5X1.0T (Ref # 92026)	92026-092	1
SPACER (Ref # 92026A)	92026-1272	1
COLLAR,12X17X17.3 (Ref # 92027)	92027-1723	1
PIN (Ref # 92043)	92043-132	3
"O" RING,56MM (Ref # 92055)	92055-1042	1
RING-O (Ref # 92055A)	92055-1303	1
RING-O (Ref # 92055B)	92055-1304	2
SPRING,COIL (Ref # 92081)	92081-159	3
ROLLER (Ref # 92122)	92122-006	3
BOLT-SOCKET,8X14 (Ref # 120)	120P0814	3
SCREW-PAN-WS-CROS (Ref # 223)	223B0508	1
SCREW-PAN-WS-CROS (Ref # 223A)	223X0616	2
WASHER SPRING 5MM (Ref # 461)	461F0500	2