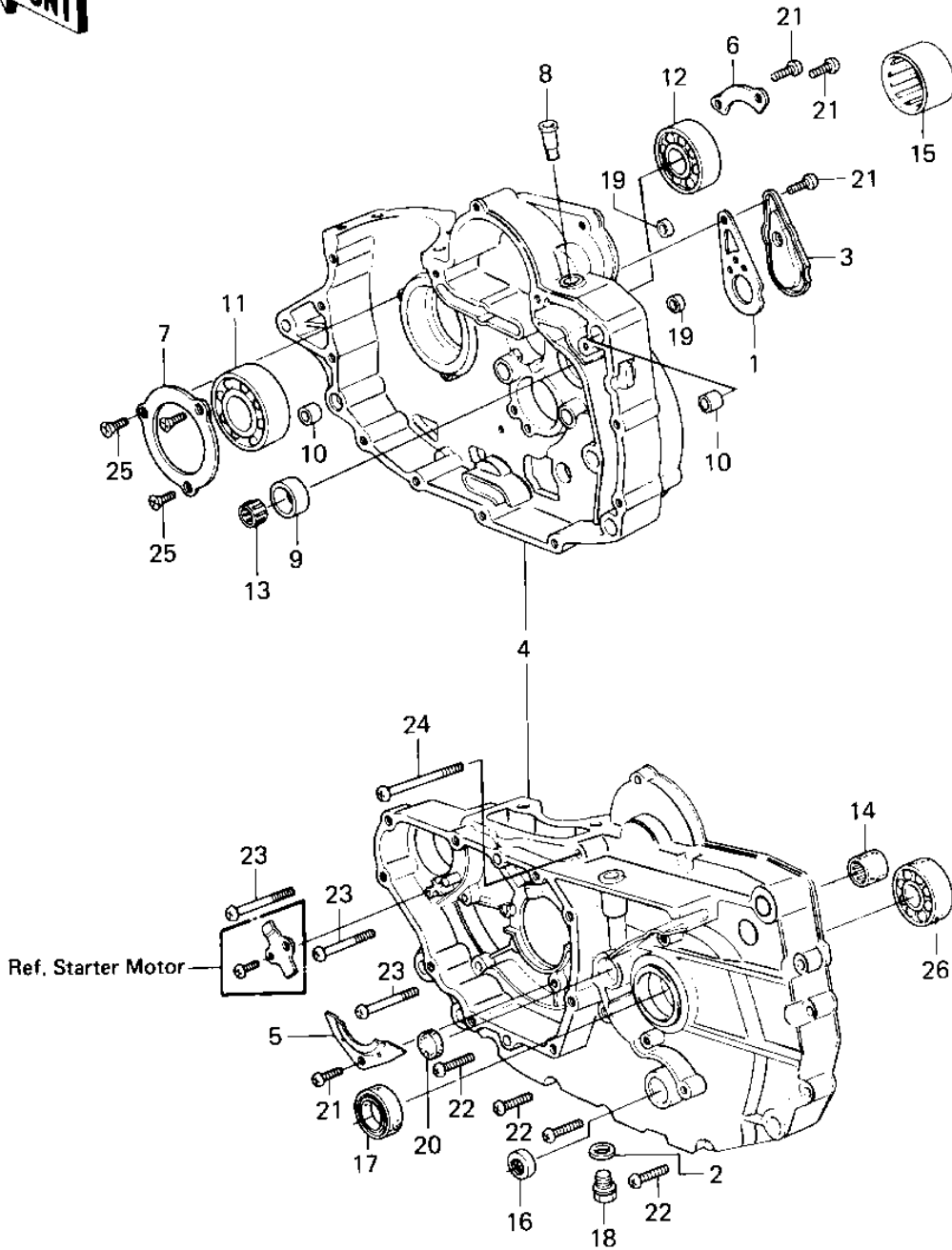


1983 Prairie PARTS DIAGRAM

CRANKCASE ('83 C1)

E1411-0082



1983 Prairie PARTS LIST

CRANKCASE ('83 C1)

| ITEM NAME | PART NUMBER | QUANTITY |
|----------------------------------|-------------|----------|
| GASKET (Ref # 1) | 16079-002 | 1 |
| GASKET,DRIN PLUG (Ref # 2) | 92065-097 | 1 |
| CAP (Ref # 3) | 16078-002 | 1 |
| SET-CRANKCASE (Ref # 4) | 14001-5137 | 1 |
| PLATE,POSITIONING (Ref # 5) | 14014-035 | 1 |
| PLATE,POSITIONING (Ref # 6) | 14014-037 | 1 |
| PLATE,POSITIONING (Ref # 7) | 14014-1004 | 1 |
| BREATHER JOINT (Ref # 8) | 14067-006 | 1 |
| BUSHING (Ref # 9) | 92028-132 | 1 |
| PIN,DOWEL,14MM (Ref # 10) | 92042-032 | 1 |
| BEARING,BALL,#6306 (Ref # 11) | 92045-037 | 1 |
| BEARING,BALL#6006 (Ref # 12) | 92045-038 | 1 |
| BEARING-NEEDLE (Ref # 13) | 92046-1184 | 1 |
| BRG,NEEDLE,HMK1515B (Ref # 14) | 92046-060 | 1 |
| BEARING-NEEDLE,NK20/1 (Ref # 1) | 92046-1183 | 1 |
| OIL SEAL,CHANGE SHAFT (Ref # 16) | 92050-082 | 1 |
| SEAL-OIL,TC32457 (Ref # 17) | 92049-1159 | 1 |
| PLUG,OIL DRAIN,12X15 (Ref # 18) | 92066-1174 | 1 |
| PLUG (Ref # 19) | 92066-1282 | 1 |
| PLUG (Ref # 20) | 92066-1116 | 1 |
| SCREW PAN HEAD 6X14 (Ref # 21) | 220B0614 | 1 |
| SCREW PAN HEAD 6X30 (Ref # 22) | 220B0630 | 1 |
| SCREW PAN HEAD 6X55 (Ref # 23) | 220B0655 | 1 |
| SCREW PAN HEAD 6X75 (Ref # 24) | 220B0675 | 1 |
| SCREW CNTSNK HD 6X16 (Ref # 25) | 221B0616 | 1 |
| BEARING BALL #6205 (Ref # 26) | 601B6205 | 1 |