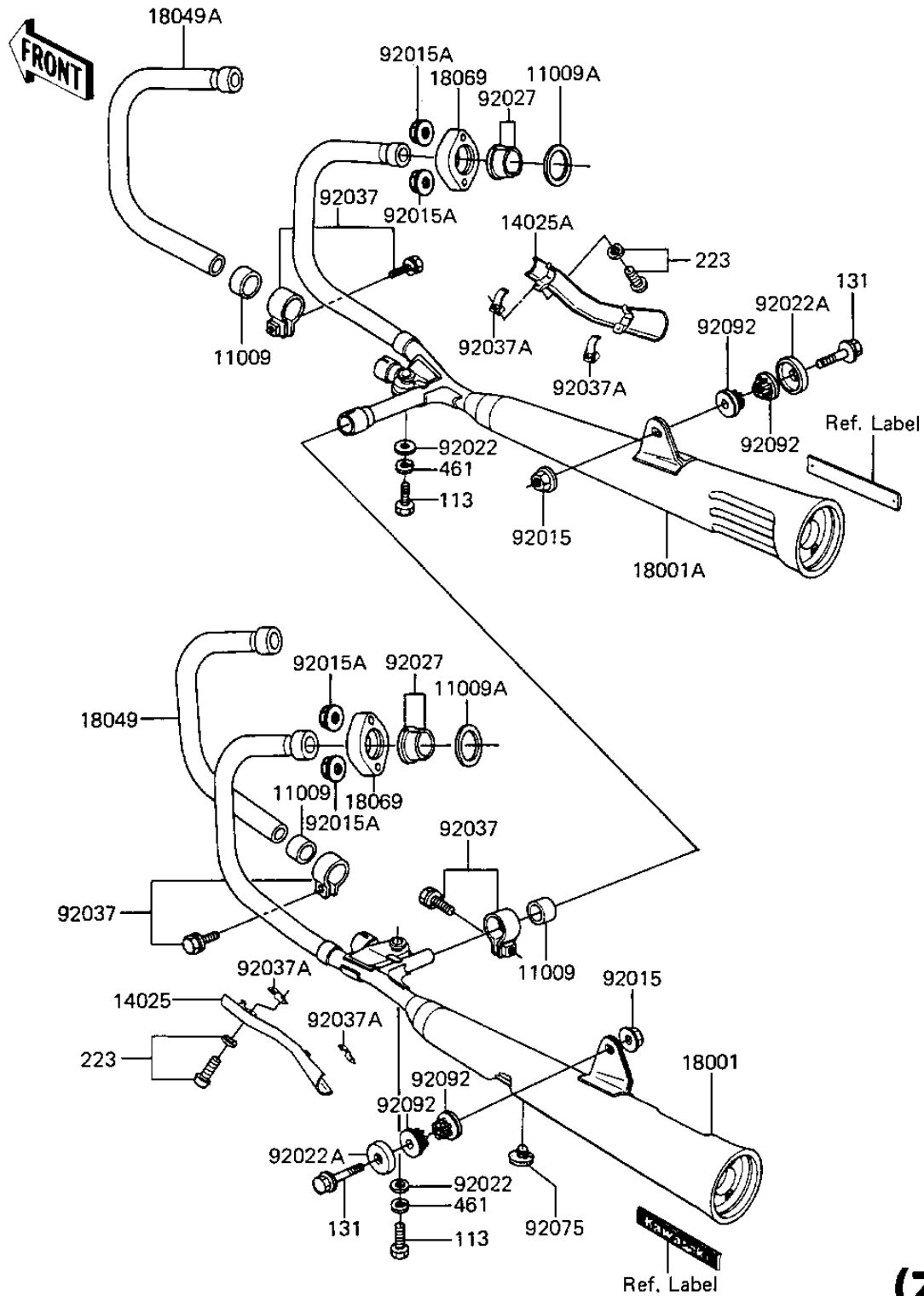


# 1984 GPz PARTS DIAGRAM

MUFFLERS (ZX1100-A1)

E1140-0155



**(ZX110)**

# 1984 GPz PARTS LIST

## MUFFLERS (ZX1100-A1)

ITEM NAME	PART NUMBER	QUANTITY
GASKET,MANIFOLD EXHAU (Ref # 11009)	11060-1068	3
GASKET,EXHAUST PIPE H (Ref # 11009A)	11009-1906	4
COVER,MUFFLER,LH,BLAC (Ref # 14025)	14025-1647	1
COVER,MUFFLER,RH,BLAC (Ref # 14025A)	14025-1648	1
MUFFLER,LH BLACK (Ref # 18001)	18001-5103	1
MUFFLER,R.H.BLACK (Ref # 18001A)	18001-5104	1
PIPE-EXHAUST,#2,BLACK (Ref # 18049)	18049-1210	1
PIPE-EXHAUST,#3,BLACK (Ref # 18049A)	18049-1224	1
HOLDER-EXHAUST PIPE (Ref # 18069)	18069-1019	4
NUT,FLANGED,10MM (Ref # 92015)	92015-1428	2
NUT,LOCK,8MM,BLACK (Ref # 92015A)	92015-1302	8
WASHER,PLAIN (Ref # 92022)	92022-1022	2
WASHER (Ref # 92022A)	92022-1355	2
COLLAR,EXHAUST PIPE,B (Ref # 92027)	92027-1457	8
CLAMP,MUFFLER,BLACK (Ref # 92037)	92037-1270	3
CLAMP,MUFFLER COVER (Ref # 92037A)	92037-1319	4
DAMPER RUBB MAIN STAD (Ref # 92075)	92075-015	1
UNAVAILABLE IN PRICE BOOK (Ref # 92092)	92092-1031	4
BOLT,FLANGED,10X70 (Ref # 113)	92001-1618	2
BOLT-FLANGED,10X55 (Ref # 131)	131J1055	2
SCREW-PAN-WS-CROS (Ref # 223)	223C0620	4
WASHER SPRING 10MM (Ref # 461)	461F1000	2