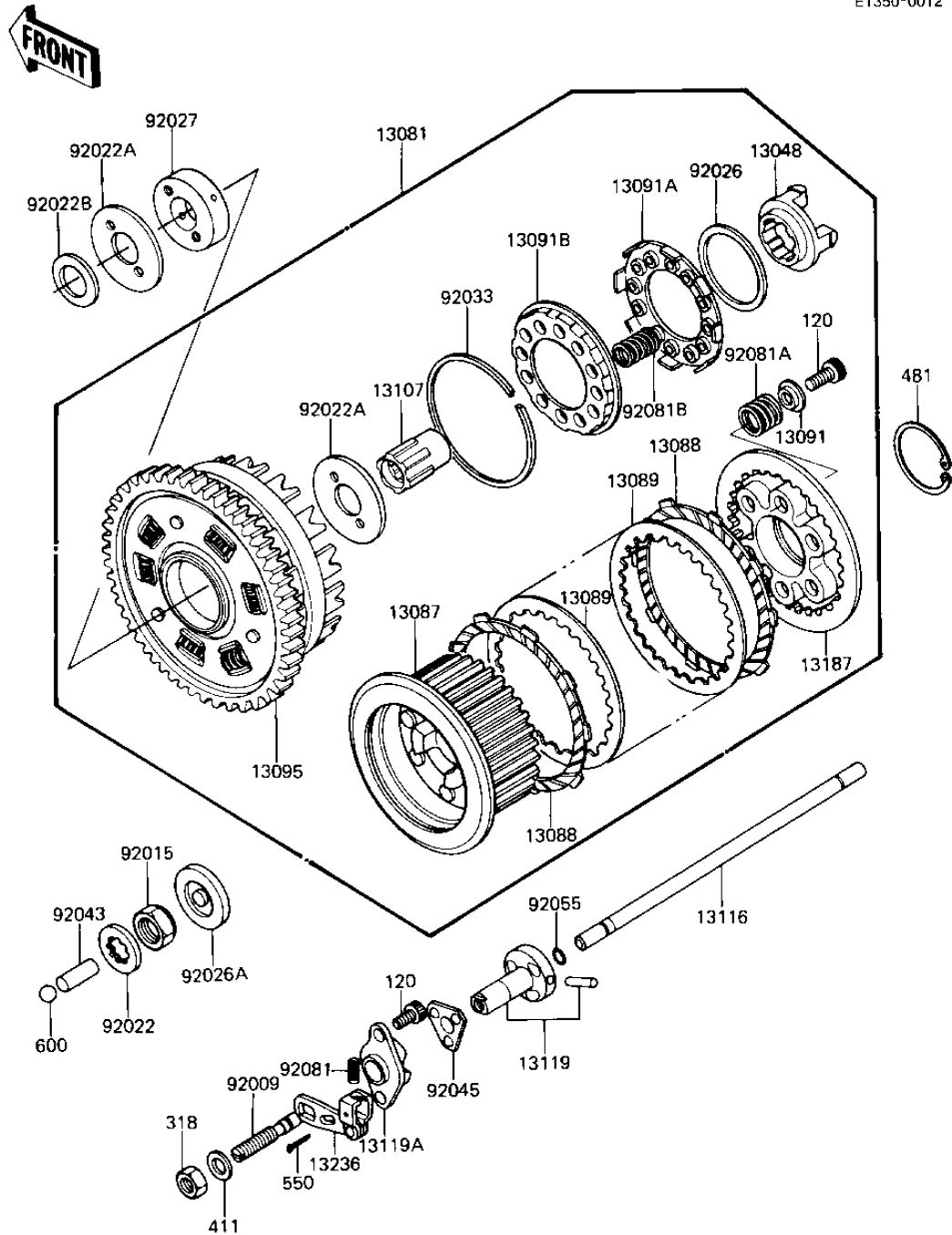


1983 LTD Shaft PARTS DIAGRAM

CLUTCH

E1350-0012



1983 LTD Shaft PARTS LIST

CLUTCH

| ITEM NAME | PART NUMBER | QUANTITY |
|-------------------------------------|-------------|----------|
| DAMPER (Ref # 13048) | 13048-1007 | 1 |
| CLUTCH-ASSY (Ref # 13081) | 13081-1063 | 1 |
| HUB,CLUTCH (Ref # 13087) | 13087-1009 | 1 |
| PLATE-FRICTION (Ref # 13088) | 13088-1013 | 9 |
| PLATE,CLUTCH,STEEL (Ref # 13089) | 13089-1004 | 8 |
| HOLDER,CLUTCH,SPRING (Ref # 13091) | 13091-1041 | 6 |
| HOLDER,CLUTCH SPRING (Ref # 13091A) | 13091-1042 | 1 |
| HOLDER,CLUTCH SPRING (Ref # 13091B) | 13091-1043 | 1 |
| HOUSING-COMP-CLUTCH (Ref # 13095) | 13095-1037 | 1 |
| SHAFT,CLUTCH (Ref # 13107) | 13107-1024 | 1 |
| ROD,CLUTCH PUSH (Ref # 13116) | 13116-1007 | 1 |
| CAM,CLUTCH RELEASE A (Ref # 13119) | 13119-1007 | 1 |
| CAM,CLUTCH RELEASE B (Ref # 13119A) | 13119-1008 | 1 |
| PLATE,CLUTCH OPERATNG (Ref # 13187) | 13187-1004 | 1 |
| LEVER ASSY,CLUTCH REL (Ref # 13236) | 13236-1012 | 1 |
| SCREW,CLUTCH RELEASE (Ref # 92009) | 92009-1052 | 1 |
| NUT,20MM (Ref # 92015) | 92015-1555 | 1 |
| WASHER,LOCK (Ref # 92022) | 92022-1114 | 1 |
| WASHER,CLUTCH THRUST (Ref # 92022A) | 92022-1221 | 2 |
| WASHER (Ref # 92022B) | 92022-1223 | 1 |
| SPACER,3.5X59X70 (Ref # 92026) | 92026-1043 | 1 |
| SPACER,CLUTCH (Ref # 92026A) | 92026-1065 | 1 |
| COLLAR (Ref # 92027) | 92027-1284 | 1 |
| RING,SNAP (Ref # 92033) | 92033-1029 | 1 |
| PIN,PUSH ROD (Ref # 92043) | 92043-1051 | 1 |
| BALL,ASSY,CLUTCH RELS (Ref # 92045) | 92045-1023 | 1 |
| "O" RING,5MM (Ref # 92055) | 670B1505 | 1 |
| SPRING-CLUTCH RELEASE (Ref # 92081) | 92081-069 | 1 |
| SPRING,CLUTCH (Ref # 92081A) | 92081-1114 | 6 |

1983 LTD Shaft PARTS LIST

CLUTCH

| ITEM NAME | PART NUMBER | QUANTITY |
|---------------------------------------|-------------|----------|
| SPRING,CLUTCH DAMPER (Ref # 92081B) | 92081-1115 | 12 |
| BOLT-SOCKET,6X16,BLAC (Ref # 120) | 120S0616 | 8 |
| NUT 8MM (Ref # 318) | 318B0800 | 1 |
| WASHER PLAIN 8MM (Ref # 411) | 411B0800 | 1 |
| UNAVAILABLE IN PRICE BOOK (Ref # 481) | 481Q5000 | 1 |
| PIN COTTER 1.6X15 (Ref # 550) | 550D1615 | 1 |
| BALL STEEL 3/8' (Ref # 600) | 600A1200 | 1 |