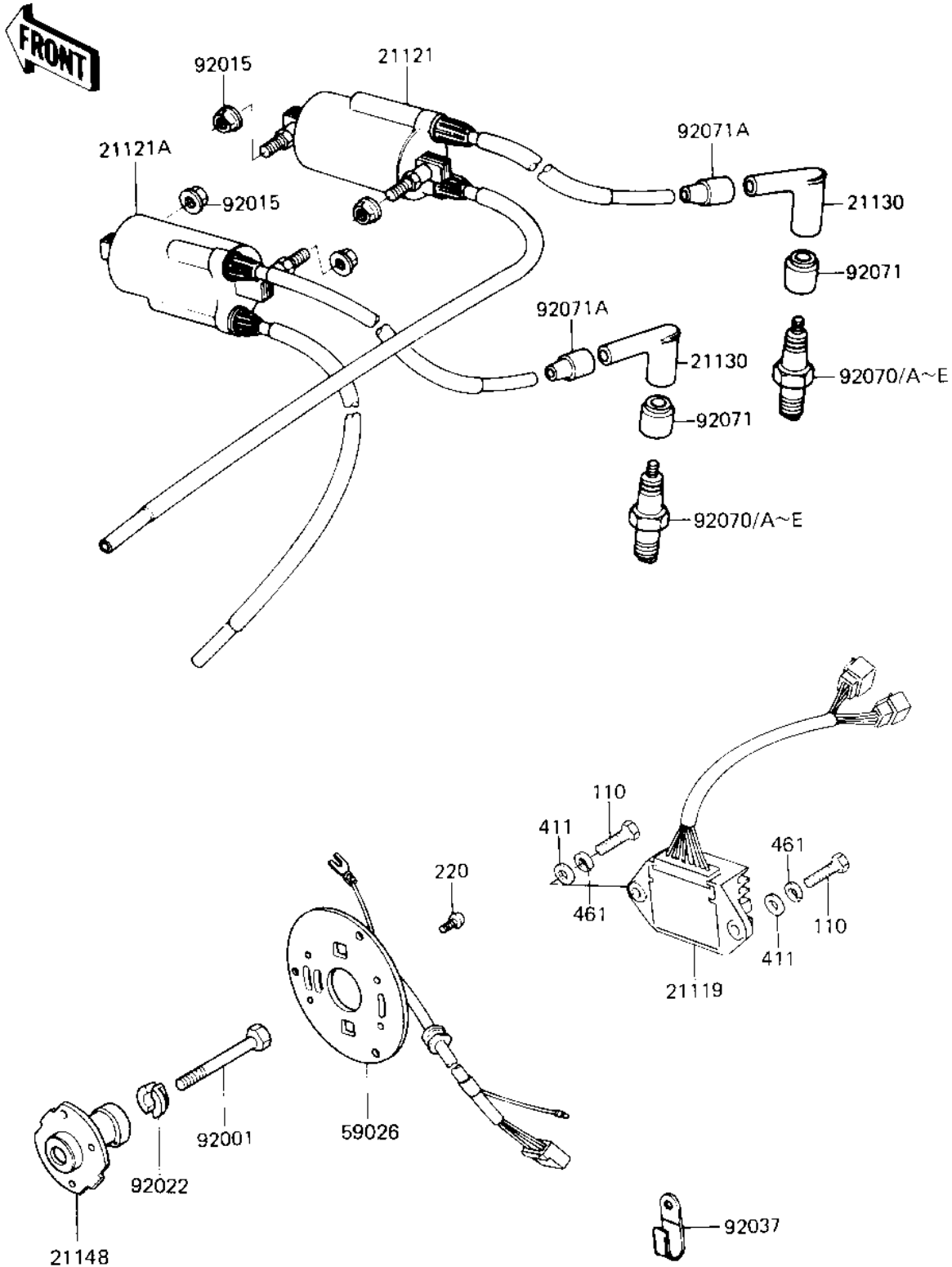


1983 KZ750-L3 PARTS DIAGRAM

IGNITION

E1830-0139



1983 KZ750-L3 PARTS LIST

IGNITION

ITEM NAME	PART NUMBER	QUANTITY
IGNITER (Ref # 21119)	21119-1050	1
COIL,IGNITION #1.#4 (Ref # 21121)	21121-1027	1
COIL,IGNITION #2.#3 (Ref # 21121A)	21121-1028	1
CAP-SPARK PLUG,RTFM20 (Ref # 21130)	21130-1007	4
ADVANCER,AUTO TIMING (Ref # 21148)	21148-1013	1
COIL-PULSING (Ref # 59026)	59026-1019	1
BOLT-8X63 (Ref # 92001)	92001-1397	1
NUT-6MM (Ref # 92015)	92015-1078	4
WASHER,SPARK ADVANCER (Ref # 92022)	92022-244	1
CLAMP,WIRING HARNESS (Ref # 92037)	21126-008	2
SPARK PLUG B7ES (Ref # 92070)	B7ES	4
SPARK PLUG B8ES (Ref # 92070A)	B8ES	4
SPARK PLUG BR8ES (Ref # 92070D)	BR8ES	4
GROMMET-PLUG CAP,A (Ref # 92071)	21131-004	4
GROMMET,SPARK PLG CAP (Ref # 92071A)	21132-005	4
BOLT-UPSET (Ref # 110)	112G0618	2
SCREW PAN HEAD 5X12 (Ref # 220)	220B0512	3
WASHER PLAIN 6MM (Ref # 411)	411B0600	2
WASHER SPRING 6MM (Ref # 461)	461F0600	2