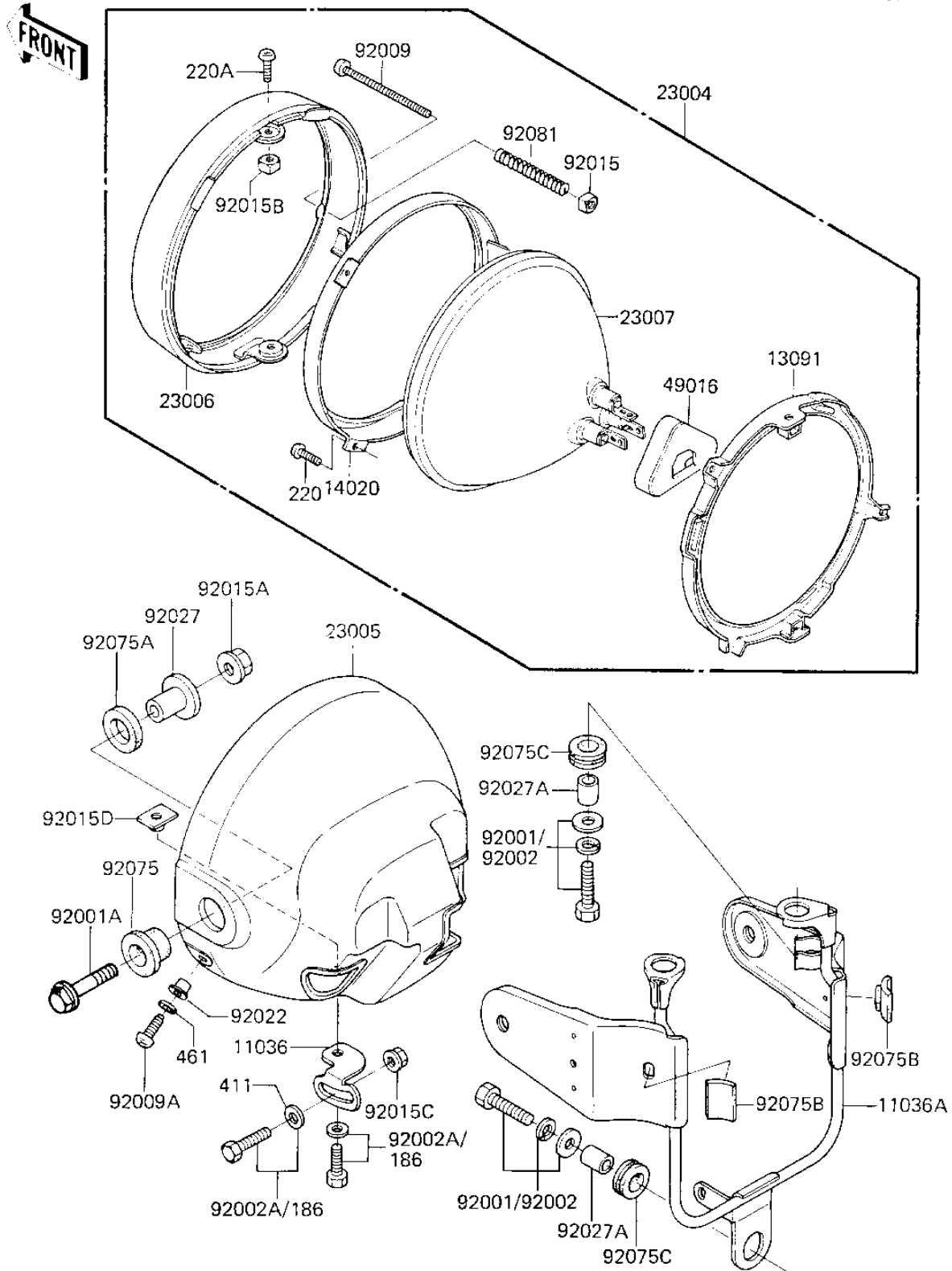


# 1984 KZ750-K2 (Canada Only) PARTS DIAGRAM

## HEADLIGHT

F2710-0167



# 1984 KZ750-K2 (Canada Only) PARTS LIST

## HEADLIGHT

ITEM NAME	PART NUMBER	QUANTITY
BRACKET-A,HEAD LAMP (Ref # 11036)	11036-1649	1
BRACKET-A,HEAD LAMP (Ref # 11036A)	11036-1687	1
HOLDER,HEAD LAMP (Ref # 13091)	13091-1160	1
RETAINER,HEAD LAMP (Ref # 14020)	14020-1018	1
LAMP-HEAD (Ref # 23004)	23004-1089	1
BODY-COMP-HEAD LAMP,C (Ref # 23005)	23005-1027	1
RIM-LAMP,CR PLATED (Ref # 23006)	23006-1020	1
SEALED BEAM UNIT (Ref # 23007)	23007-1006	1
DUST COVER,HEAD LAMP (Ref # 49016)	49016-1009	1
BOLT,FLANGED,8X35 (Ref # 92001A)	92001-1910	2
BOLT,6X25 (Ref # 92002)	92002-1137	3
BOLT (Ref # 92002A)	186B0614	2
SCREW,FOCUS ADJU.4X52 (Ref # 92009)	92009-1033	1
SCREW-PAN HEAD,5MM (Ref # 92009A)	92011-024	2
NUT,4MM (Ref # 92015)	23020-018	1
NUT,8M/M (Ref # 92015A)	92015-1014	2
NUT,5MM (Ref # 92015B)	92015-1157	2
NUT-6MM (Ref # 92015C)	92015-1078	1
NUT-6MM,HEAD LAMP (Ref # 92015D)	92015-1231	1
WASHER (Ref # 92022)	23021-010	2
COLLAR,HEAD LAMP FITT (Ref # 92027)	92027-1131	2
COLLAR,REAR FENDER (Ref # 92027A)	92027-162	3
DAMPER,HEAD LAMP FITT (Ref # 92075)	92075-1109	2
DAMPER,HEAD LAMP FITT (Ref # 92075A)	92075-1110	2
DAMPER RUBBER (Ref # 92075B)	92075-1243	2
DAMPER RUBBER,RR FENR (Ref # 92075C)	92075-209	3
SPRING FOCUS ADJUST (Ref # 92081)	23014-005	1
SCREW PAN HEAD 3X8 (Ref # 220)	220B0308	2
SCREW PAN HEAD 5X10 (Ref # 220A)	220B0510	2

# 1984 KZ750-K2 (Canada Only) PARTS LIST

## HEADLIGHT

ITEM NAME	PART NUMBER	QUANTITY
WASHER SPRING 5MM (Ref # 461)	461F0500	2