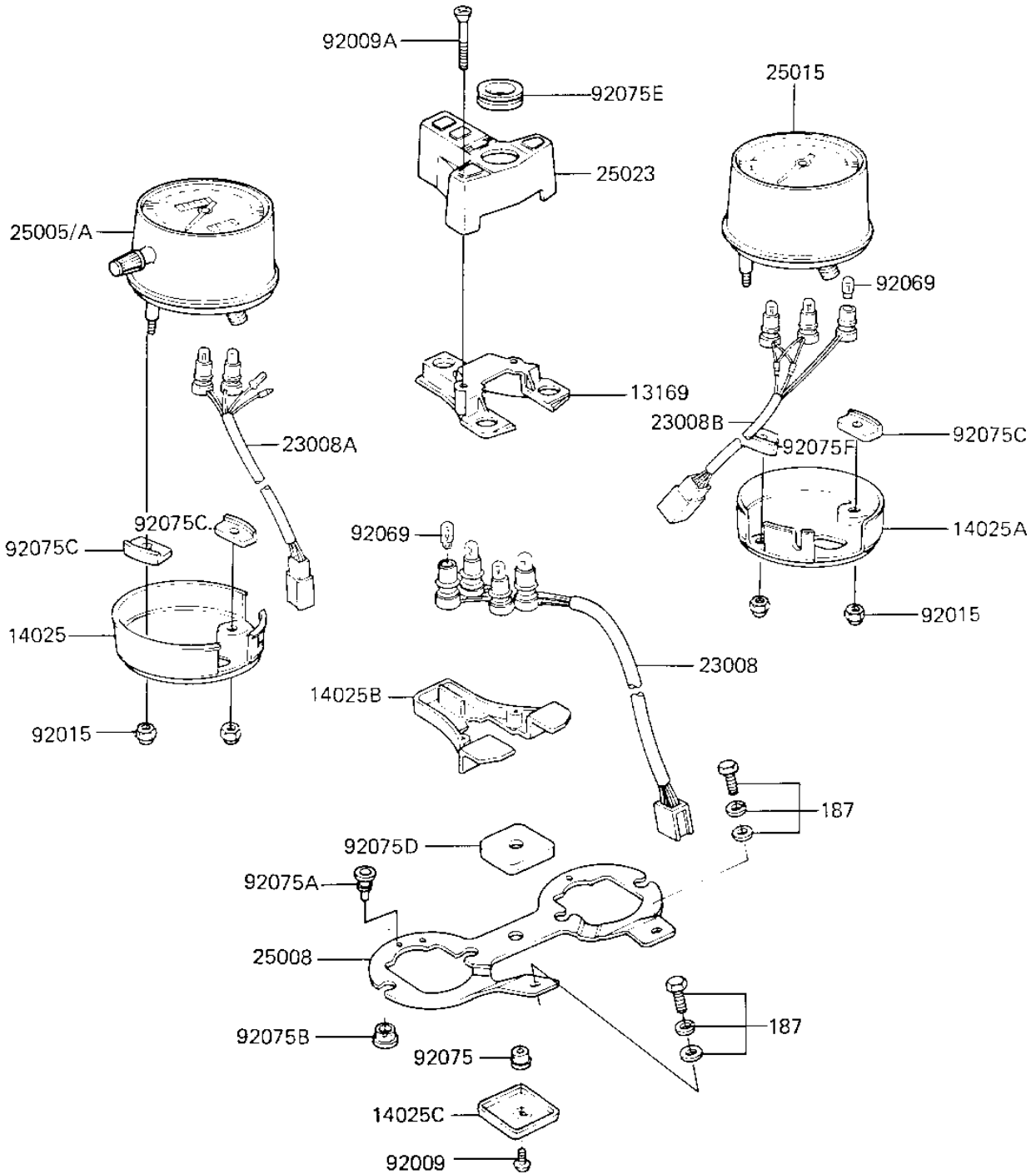


1984 KZ750-K2 (Canada Only) PARTS DIAGRAM

METERS

F2530-0190



1984 KZ750-K2 (Canada Only) PARTS LIST

METERS

| ITEM NAME | PART NUMBER | QUANTITY |
|---|-------------|----------|
| PLATE,SOCKET (Ref # 13169) | 13169-1268 | 1 |
| COVER,SPEEDOMETER (Ref # 14025) | 14025-1224 | 1 |
| COVER,TACHOMETER (Ref # 14025A) | 14025-1225 | 1 |
| COVER,PILOT BOX LOWER (Ref # 14025B) | 14025-1226 | 1 |
| COVER,METER BRACKET (Ref # 14025C) | 14025-1227 | 1 |
| SOCKET-ASSY,PILOT BOX (Ref # 23008) | 23008-1107 | 1 |
| SOCKET-ASSY,SPEEDOMET (Ref # 23008A) | 23008-1129 | 1 |
| SOCKET-ASSY,TACHOMETE (Ref # 23008B) | 23008-1176 | 1 |
| SPEEDOMETER,KPH (Canada) (Ref # 25005A) | 25005-1147 | 1 |
| BRACKET,METER (Ref # 25008) | 25008-1030 | 1 |
| TACHOMETER (Ref # 25015) | 25015-1088 | 1 |
| COVER,PILOT BOX UPPER (Ref # 25023) | 25023-1021 | 1 |
| SCREW,TAPPING,4X10 (Ref # 92009) | 92009-1040 | 1 |
| SCREW,CUNTERS NK,4X35 (Ref # 92009A) | 92009-1093 | 2 |
| NUT-CAP,5MM (Ref # 92015) | 322N0500 | 4 |
| BULB,12V3.4W (Ref # 92069) | 92069-1007 | 9 |
| DAMPER RUBBER,MET FIT (Ref # 92075) | 25019-023 | 1 |
| DAMPER,METER (Ref # 92075A) | 92075-1149 | 2 |
| DAMPER,METER FITTING (Ref # 92075B) | 92075-1150 | 4 |
| DAMPER,METER (Ref # 92075C) | 92075-1192 | 3 |
| DAMPER RUBBER (Ref # 92075D) | 92075-1255 | 1 |
| DAMPER RUBBER (Ref # 92075E) | 92075-1256 | 1 |
| DAMPER RUBBER,METER (Ref # 92075F) | 92075-1265 | 1 |
| BOLT 6X14 (Ref # 187) | 187B0614 | 2 |