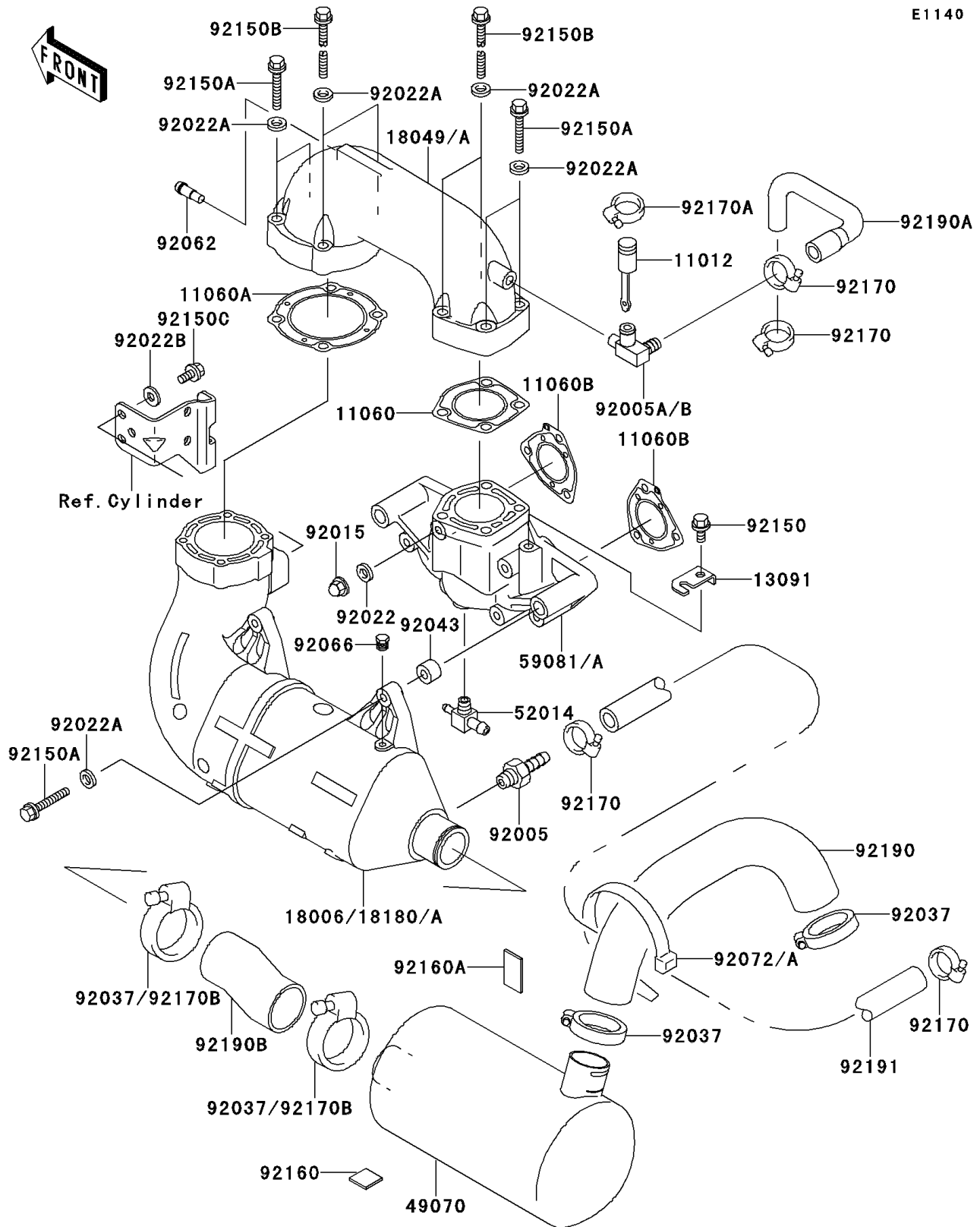


1995 750 ZXi PARTS DIAGRAM

Muffler(s)

E1140



1995 750 ZXi PARTS LIST

Muffler(s)

| ITEM NAME | PART NUMBER | QUANTITY |
|--|-------------|----------|
| CAP (Ref # 11012) | 11012-3757 | 1 |
| GASKET (Ref # 11060) | 11060-3754 | 1 |
| GASKET (Ref # 11060A) | 11060-3755 | 1 |
| GASKET,EXHAUST MANIFOLD (Ref # 11060B) | 11060-3759 | 2 |
| HOLDER (Ref # 13091) | 13091-3791 | 1 |
| BODY-MUFFLER (Ref # 18006) | 18006-3713 | 1 |
| PIPE-EXHAUST (Ref # 18049) | 18049-3749 | 1 |
| MUFFLER-COMP (Ref # 49070) | 49070-3725 | 1 |
| ELBOW (Ref # 52014) | 52014-3711 | 1 |
| MANIFOLD-EXHAUST (Ref # 59081) | 59081-3714 | 1 |
| FITTING,HOSE (Ref # 92005) | 92005-3712 | 1 |
| FITTING (Ref # 92005A) | 92005-3715 | 1 |
| NUT,CAP,8MM (Ref # 92015) | 92015-1371 | 6 |
| WASHER,8.2X18X1.5 (Ref # 92022) | 92022-1964 | 6 |
| WASHER,10.2X20X1.5 (Ref # 92022A) | 92022-3742 | 10 |
| WASHER,8.2X18X1.5 (Ref # 92022B) | 92022-3743 | 2 |
| CLAMP (Ref # 92037) | 92037-3738 | 4 |
| PIN,11X14X12.3 (Ref # 92043) | 92043-1266 | 2 |
| NOZZLE (Ref # 92062) | 92062-3705 | 1 |
| PLUG,CYLINDER HEAD (Ref # 92066) | 92066-3001 | 1 |
| BAND,L=292.1 (Ref # 92072) | 92072-3509 | 1 |
| BAND (Ref # 92072A) | 92072-3799 | 1 |
| BOLT,8X16 (Ref # 92150) | 92150-3722 | 1 |
| BOLT,10X50 (Ref # 92150A) | 92150-3819 | 6 |
| BOLT,10X125 (Ref # 92150B) | 92150-3825 | 4 |
| BOLT,8X16 (Ref # 92150C) | 92150-3846 | 2 |
| DAMPER,25X25 (Ref # 92160) | 92160-3864 | 1 |
| DAMPER,40X25 (Ref # 92160A) | 92160-3865 | 1 |
| CLAMP (Ref # 92170) | 92170-3718 | 4 |

1995 750 ZXi PARTS LIST

Muffler(s)

| ITEM NAME | PART NUMBER | QUANTITY |
|--------------------------------------|--------------------|-----------------|
| CLAMP (Ref # 92170A) | 92170-3729 | 1 |
| TUBE,MUFFLER-TAILPIPE (Ref # 92190) | 92190-3938 | 1 |
| TUBE,HEAD-EXHAUSTPIPE (Ref # 92190A) | 92190-3939 | 1 |
| TUBE,CHAMBER-MUFFLER (Ref # 92190B) | 92190-3986 | 1 |
| TUBE,TAIL-CHAMBER (Ref # 92191) | 92191-3714 | 1 |