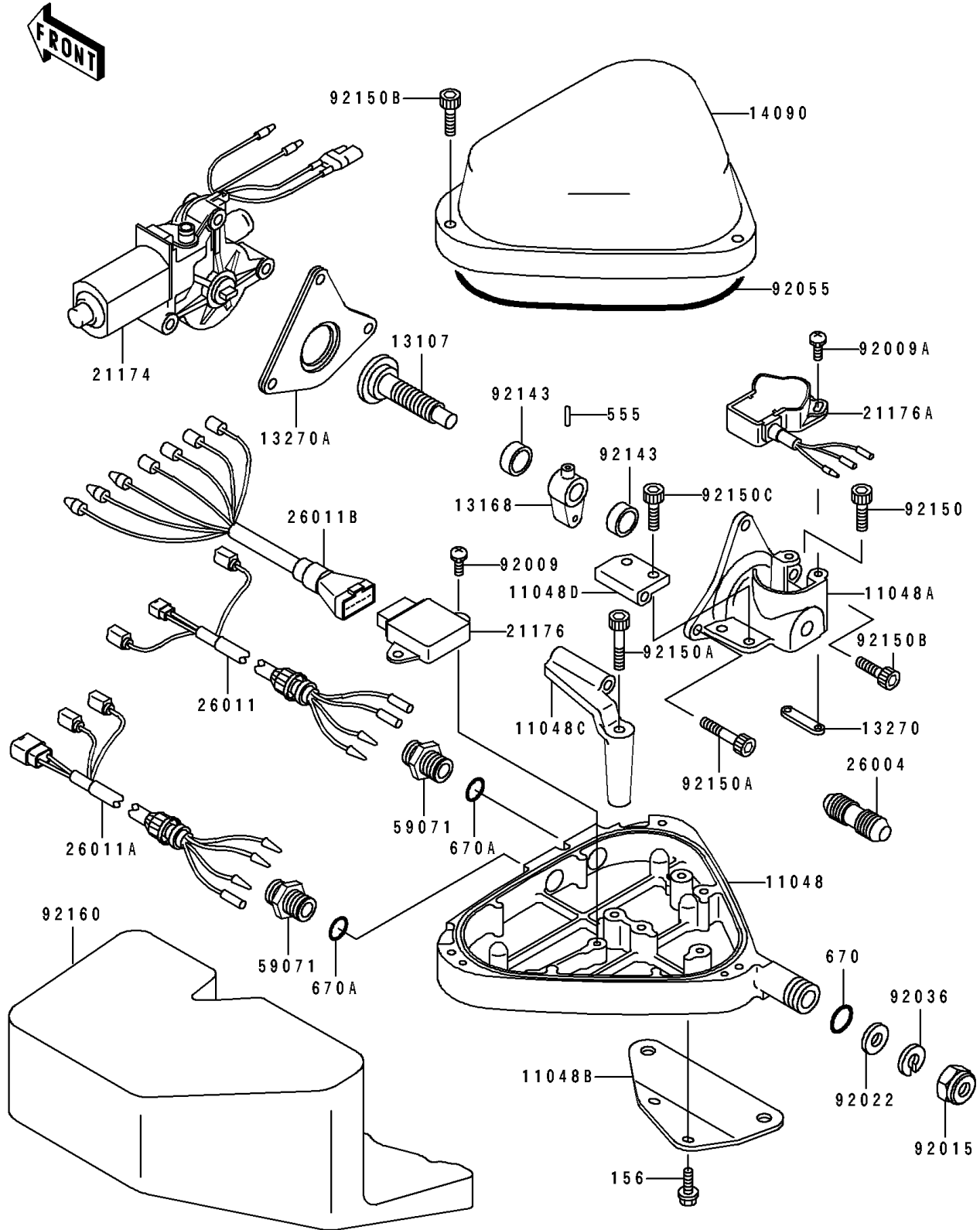


# 1995 Super Sport XI PARTS DIAGRAM

Control(JH750-B2/B3)

F3175B



# 1995 Super Sport XI PARTS LIST

Control(JH750-B2/B3)

ITEM NAME	PART NUMBER	QUANTITY
BRACKET,MOTOR BOX,LWR (Ref # 11048)	11048-3737	1
BRACKET,MOTOR MOUNT (Ref # 11048A)	11048-3738	1
BRACKET,MOTOR BOX (Ref # 11048B)	11048-3739	1
BRACKET (Ref # 11048C)	11048-3753	1
BRACKET (Ref # 11048D)	11048-3754	1
SHAFT (Ref # 13107)	13107-3735	1
LEVER,SLIDE (Ref # 13168)	13168-3724	1
PLATE,TRIM SENSOR (Ref # 13270)	13270-3744	1
PLATE,MOTOR MOUNT (Ref # 13270A)	13270-3750	1
COVER,MOTOR BOX,UPP (Ref # 14090)	14090-3768	1
MOTOR-ELECTRIC (Ref # 21174)	21174-3702	1
SENSOR,MOTOR CONTROL (Ref # 21176)	21176-3701	1
SENSOR,TRIM METER (Ref # 21176A)	21176-3702	1
FUSE-ASSY (Ref # 26004)	26004-3715	1
WIRE-LEAD,TRIM SWITCH (Ref # 26011)	26011-3806	1
WIRE-LEAD,TRIM METER (Ref # 26011A)	26011-3807	1
WIRE-LEAD,MOTOR CONTROL (Ref # 26011B)	26011-3809	1
JOINT (Ref # 59071)	59071-3001	2
SCREW,5X12 (Ref # 92009)	92009-3740	2
SCREW,4X12 (Ref # 92009A)	92009-3807	2
NUT,20MM (Ref # 92015)	92015-526	1
WASHER (Ref # 92022)	92022-535	1
RING-SNAP (Ref # 92036)	92036-501	1
RING-O,ID=171 (Ref # 92055)	92055-3737	1
COLLAR,15X20X8 (Ref # 92143)	92143-3742	2
BOLT,SOCKET,6X18 (Ref # 92150)	92150-3775	2
BOLT,SOCKET,6X65 (Ref # 92150A)	92150-3821	3
BOLT,SOCKET,6X30 (Ref # 92150B)	92150-3822	4
BOLT,SOCKET,6X25 (Ref # 92150C)	92150-3823	2

# 1995 Super Sport XI PARTS LIST

Control(JH750-B2/B3)

ITEM NAME	PART NUMBER	QUANTITY
DAMPER,MOTOR BOX (Ref # 92160)	92160-3822	1
BOLT-WP,6X14 (Ref # 156)	156R0614	2
PIN-SPRING,3X14 (Ref # 555)	555B0314	1
O RING,11MM (Ref # 670)	670B2011	1
O RING,16MM (Ref # 670A)	670B2016	2