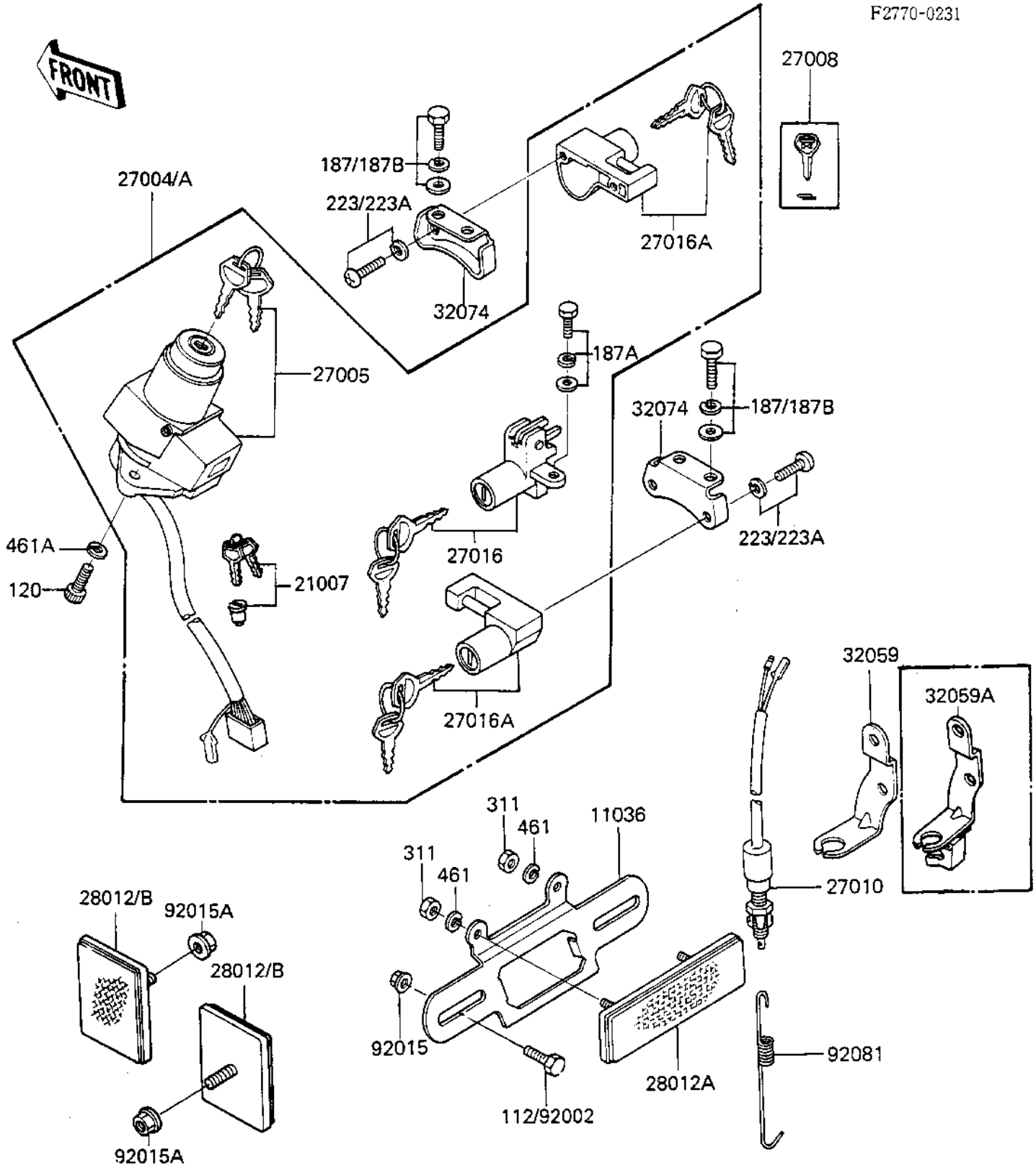


1983 Spectre PARTS DIAGRAM

IGNITION SWITCH/LOCKS/REFLECTORS

F2770-0231



1983 Spectre PARTS LIST

IGNITION SWITCH/LOCKS/REFLECTORS

| ITEM NAME | PART NUMBER | QUANTITY |
|--------------------------------------|-------------|----------|
| BRACKET,REFLECTOR,RR (Ref # 11036) | 11036-1150 | 1 |
| SWITCH-ASSY (Ref # 27004) | 27004-5150 | 1 |
| SWITCH-ASSY-IGNITION (Ref # 27005) | 27005-5024 | 1 |
| KEY-LOCK,BLANK (Ref # 27008) | 27008-1103 | 1 |
| SWITCH,BRAKE LAMP (Ref # 27010) | 27010-1019 | 1 |
| LOCK-ASSY,SEAT (Ref # 27016) | 27016-5010 | 1 |
| LOCK ASSY,HELMET (Ref # 27016A) | 27016-5038 | 1 |
| REFLECTOR,REFLEX(FRON (Ref # 28012) | 28012-1003 | 1 |
| REFLECTOR,REAR REFLEX (Ref # 28012A) | 28012-1005 | 1 |
| BRACKET-SWITCH (Ref # 32059) | 32059-1024 | 1 |
| BRACKET-LOCK (Ref # 32074) | 32074-1041 | 1 |
| NUT-6MM (Ref # 92015) | 92015-1078 | 1 |
| NUT,FLANGED,5MM (Ref # 92015A) | 92015-1259 | 1 |
| SPRING BRAKE LAMP SW (Ref # 92081) | 27011-004 | 1 |
| BOLT-UPSET,6X12 (Ref # 112) | 112G0612 | 1 |
| BOLT-SOCKET,6X16,BLAC (Ref # 120) | 120S0616 | 1 |
| BOLT 6X12 (Ref # 187) | 187B0612 | 1 |
| BOLT 6X14 (Ref # 187A) | 187B0614 | 1 |
| SCREW-PAN-WS-CROS (Ref # 223) | 223B0508 | 1 |
| NUT,5MM (Ref # 311) | 311B0500 | 1 |
| WASHER SPRING 5MM (Ref # 461) | 461F0500 | 1 |
| WASHER SPRING 6MM (Ref # 461A) | 461F0600 | 1 |